



Garden Apartment, 31 Sharrow View, Nether Edge, Sheffield, S7 1ND

Saxton Mee

Garden Apartment, 31 Sharrow

Nether Edge

Guide Price

£250,000

Guide Price £250,000 to £270,000

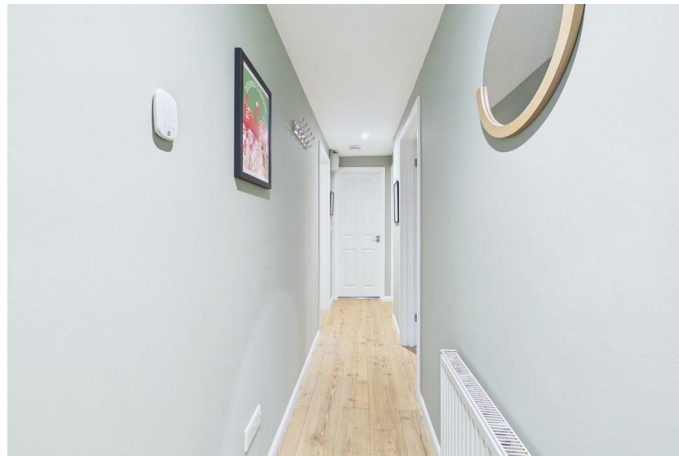
Fabulous Ground Floor Garden Apartment in the Heart of Nether Edge, Sheffield.

Set in the popular and leafy suburb of Nether Edge, this spacious two-bedroom ground floor apartment offers a rare chance to enjoy garden living in a much-loved area of Sheffield. The layout flows beautifully, with plenty of natural light and a calm, welcoming feel throughout.

At the heart of the home is a generous open-plan Kitchen/Lounge/Dining Room—a brilliant space for everyday living and entertaining. The living area looks out over the private rear garden, and French-style doors open directly onto the patio, creating a seamless connection between indoors and out. The kitchen is well-equipped with integrated appliances and plenty of workspace. There are two double bedrooms. Bedroom one features its own en-suite shower room and storage cupboard, while Bedroom two enjoys peaceful garden views at the rear and a fitted wardrobe. There is also a modern main bathroom with white suite.

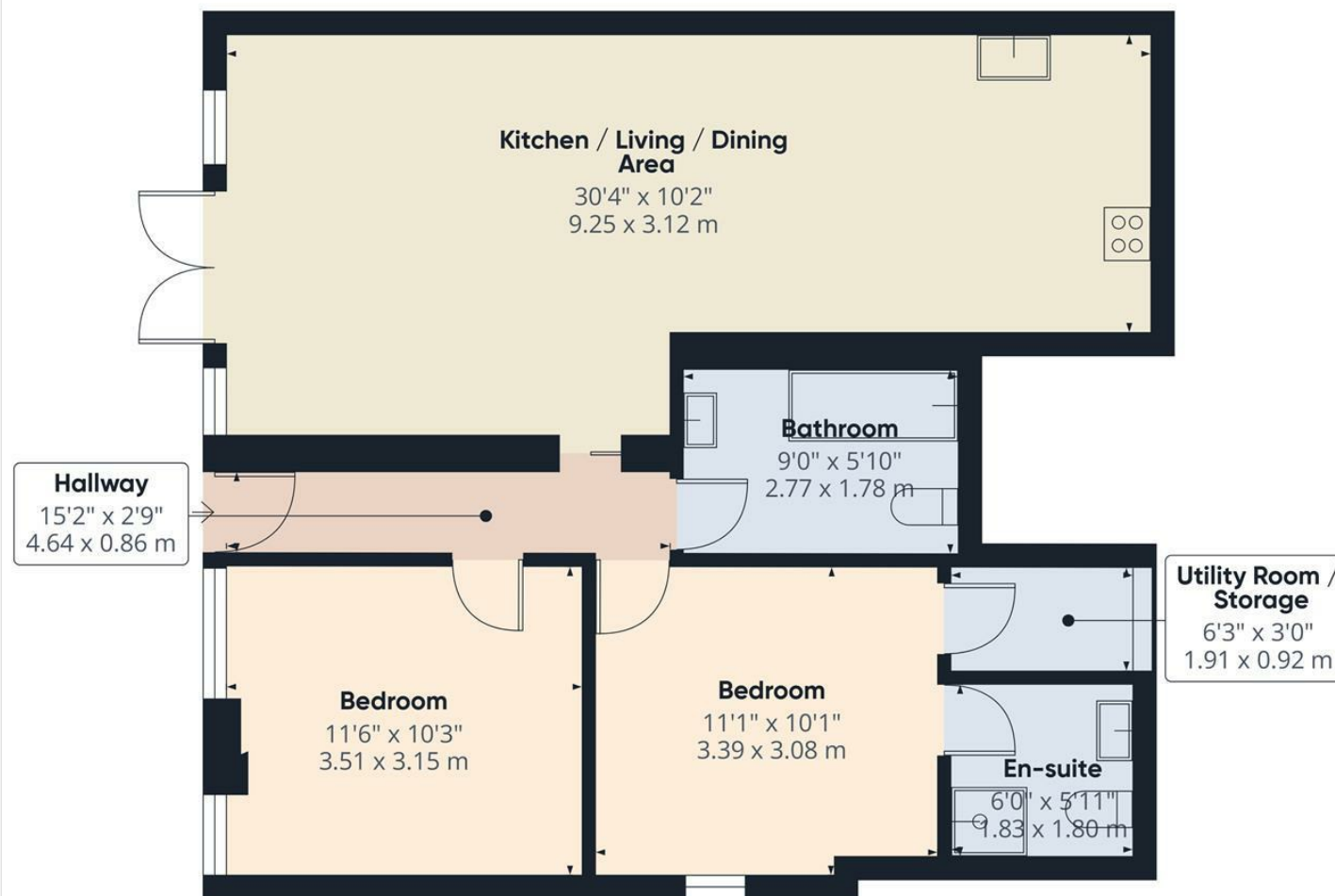
Outside, the private rear garden is a true highlight which is mainly laid to lawn, with patio seating areas perfect for relaxing, gardening, or dining al fresco. At the front, there's a driveway providing off-street parking.

Nether Edge is known for its tree-lined streets, vibrant community, and close proximity to independent shops, cafes, parks, and transport links—everything you need within easy reach.



- Ground floor apartment with private entrance
- Spacious open-plan kitchen/living/dining area with French doors opening onto the garden
- Well equipped kitchen
- Beautifully presented throughout
- Two double bedrooms, including master with en-suite
- Private rear garden
- Off-street driveway parking
- Located in the much loved area of Nether Edge
- Leasehold- 190 years remaining
- Viewings Via Banner Cross Office





Approximate total area⁽¹⁾
744 ft²
69.1 m²

(1) Excluding balconies and terraces

Calculations reference the RICS IPMS:
3C standard. Measurements are
approximate and not to scale. This
floor plan is intended for illustration
only.

GIRAFFE360

While we endeavour to make our sales particulars fair, accurate and reliable, they are only a general guide to the property and, accordingly, if there is any point, which is of particular importance to you, please contact the relevant office. The Agents have not tested any apparatus, equipment, fittings or services and so cannot verify they are in working order. The buyer is advised to obtain verification. Please note all the measurement details are approximate and should not be relied upon as exact. All plans, floor plans and maps are for guidance purposes only and are not to scale. Under no circumstances should they be relied upon as exact or for use in planning carpets and other such fixtures, fittings or furnishings. YOUR HOME IS AT RISK IF YOU DO NOT KEEP UP REPAYMENTS ON A MORTGAGE OR OTHER LOAN SECURED ON IT. 'A Life Assurance policy may be requested.' 'Written Quotations of credit terms available on request.'

Banner Cross
T: 0114 268 3241
E: bannercross@saxtonmee.co.uk
www.saxtonmee.co.uk

Hathersage
T: 01433 650009
E: hathersage@saxtonmee.co.uk

Bakewell
T: 01629 815307
E: bakewell@saxtonmee.co.uk

Matlock
T: 01629 828250
E: matlock@saxtonmee.co.uk