



Connells

Vicarage Close
Steeple Claydon BUCKINGHAM

Vicarage Close Steeple Claydon BUCKINGHAM MK18 2PU

for sale
£249,950



Property Description

Located in the popular village of Steeple Claydon, this home has been thoughtfully arranged to provide a surprisingly spacious and versatile downstairs living area. The layout flows well and offers excellent flexibility for modern day-to-day living.

The ground floor features a generous sitting room positioned at the front of the property, offering a welcoming and comfortable space to relax. To the rear, the kitchen opens into the dining room, creating a practical and connected layout that works perfectly for family life or entertaining. A conveniently located shower room completes the ground floor accommodation.

Upstairs, the property provides three bedrooms arranged from the central landing, along with a further shower room, making the home well-suited to a range of buyers seeking comfort and practicality.

Externally, the rear garden is private and includes a pleasant lawned area, offering an ideal outdoor space for relaxation, play, or entertaining. To the front, the property also benefits from a front garden, adding to the overall kerb appeal and providing a welcoming approach.

This well-presented home in a sought-after village location offers generous ground floor living space and a thoughtfully planned layout—an excellent opportunity for buyers looking to move into Steeple Claydon.

Mortgage Services

Connells Buckingham have an experienced Mortgage Consultant who can offer advice and recommend products based on your circumstances. For more information on our fantastic services, contact us.



Sitting Room

14' 10" x 13' 7" (4.52m x 4.14m)

Kitchen

15' 3" x 8' (4.65m x 2.44m)

Integrated fridge freezer, dishwasher and cooker with hob.

Dining Room

10' 6" x 8' 4" (3.20m x 2.54m)

Downstairs Shower Room

Bedroom 1

13' 3" x 8' 4" (4.04m x 2.54m)

Bedroom 2

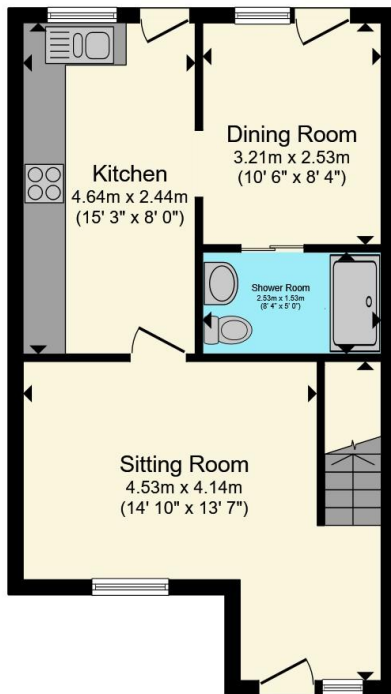
10' 2" x 8' (3.10m x 2.44m)

Bedroom 3

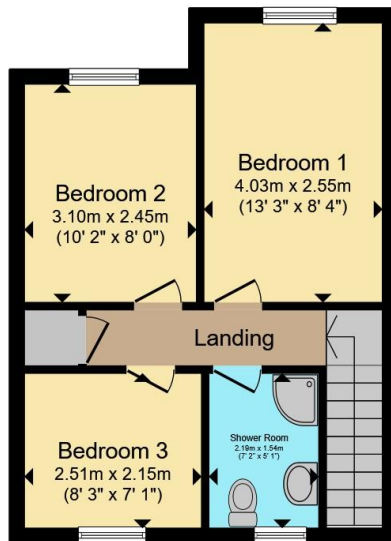
8' 3" x 7' 1" (2.51m x 2.16m)

Upstairs Shower Room





Ground Floor



First Floor



Total floor area 77.0 m² (829 sq.ft.) approx

This floor plan is for illustrative purposes only. It is not drawn to scale. Any measurements, floor areas (including any total floor area), openings and orientation are approximate. No details are guaranteed, they cannot be relied upon for any purpose and they do not form part of any agreement. No liability is taken for any error, omission or misstatement. A party must rely upon its own inspection(s). Powered by www.propertybox.io



To view this property please contact Connells on

T 01280 822 727
E buckingham@connells.co.uk

2 West Street
BUCKINGHAM MK18 1HL

EPC Rating: C Council Tax
Band: B

Tenure: Freehold

view this property online connells.co.uk/Property/BUK308008



1. MONEY LAUNDERING REGULATIONS Intending purchasers will be asked to produce identification documentation at a later stage and we would ask for your co-operation in order that there will be no delay in agreeing the sale. 2. These particulars do not constitute part or all of an offer or contract. 3. The measurements indicated are supplied for guidance only and as such must be considered incorrect. Potential buyers are advised to recheck measurements before committing to any expense. 4. We have not tested any apparatus, equipment, fixtures, fittings or services and it is in the buyers interest to check the working condition of any appliances.

Connells Residential is registered in England and Wales under company number 1489613, Registered Office is Cumbria House, 16-20 Hockliffe Street, Leighton Buzzard, Bedfordshire, LU7 1GN. VAT Registration Number is 500 2481 05.

See all our properties at www.connells.co.uk | www.rightmove.co.uk | www.zoopla.co.uk

Property Ref: BUK308008 - 0008