



FORTUNE & COATES

The People's Estate Agent



FORTUNE & COATES



8 Wattle Road, Harlow, CM17 0GE

Asking price £600,000

Fortune and Coates are delighted to offer to the market this four bedroom detached family home situated in the sought after location of Wattle Road, Harlow

As you step through the inviting entrance hallway, you will find convenient storage and a downstairs w/c, leading you to the spacious reception areas. The large lounge is a highlight of the home, featuring dual aspects that flood the room with natural light, complemented by French patio doors that open onto the rear garden, creating a seamless connection between indoor and outdoor spaces.

The kitchen/dining room is a bright and airy space, designed with white sleek wall and base units equipped with an integrated oven, hob, fridge, and dishwasher. This space is ideal for entertaining family and friends, with ample cupboard space and room for a dining table. The French patio doors provide easy access to the rear

Lounge 19'7" x 10'2" (5.99 x 3.12)

Kitchen/Breakfast Room 15'3" x 15'5" (4.67 x 4.70)

Dining Room/Sitting Room 12'0" x 9'8" (3.68 x 2.97)

Bedroom 15'3" x 9'10" (4.67 x 3.02)
En-Suite

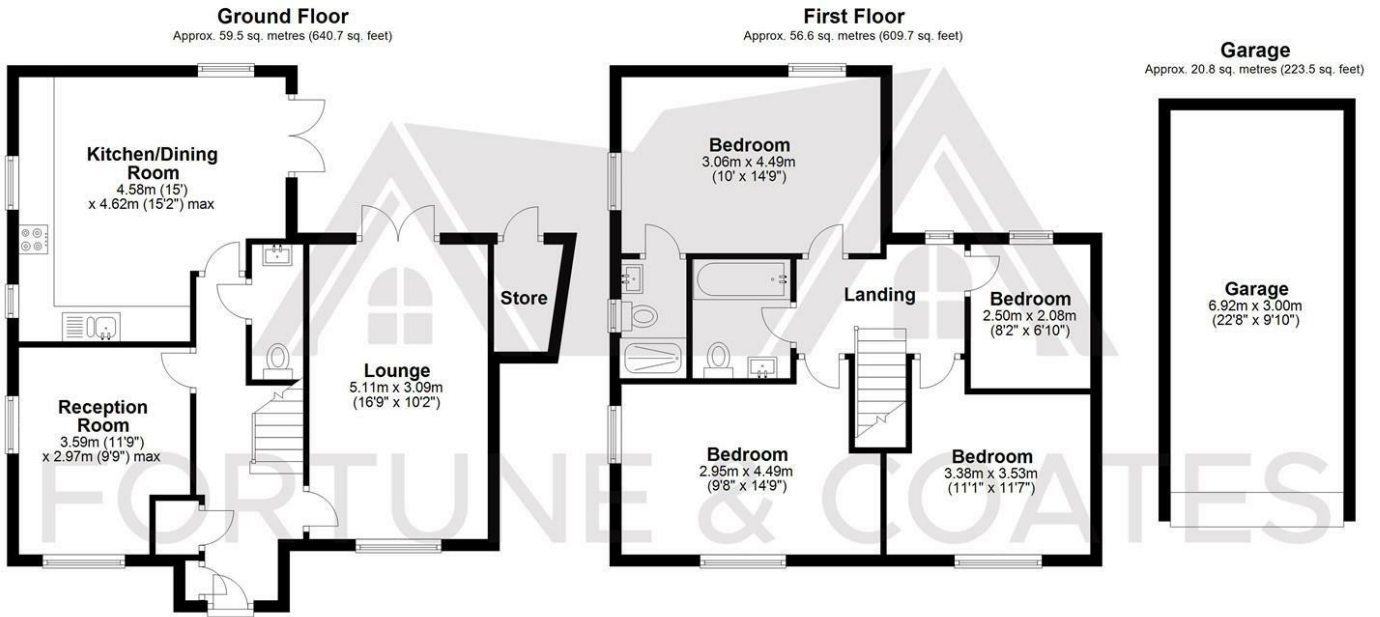
Bedroom 13'0" x 10'0" (3.98 x 3.07)

Bedroom 12'5" x 10'0" (3.81 x 3.07)

Bedroom 9'9" x 6'11" (2.99 x 2.11)

Please note that these particulars do not form part of any offer or contract. All descriptions, photographs and plans are for guidance only and should not be relied upon as statements or representations of fact. All measurements are approximate.

Floor Plan

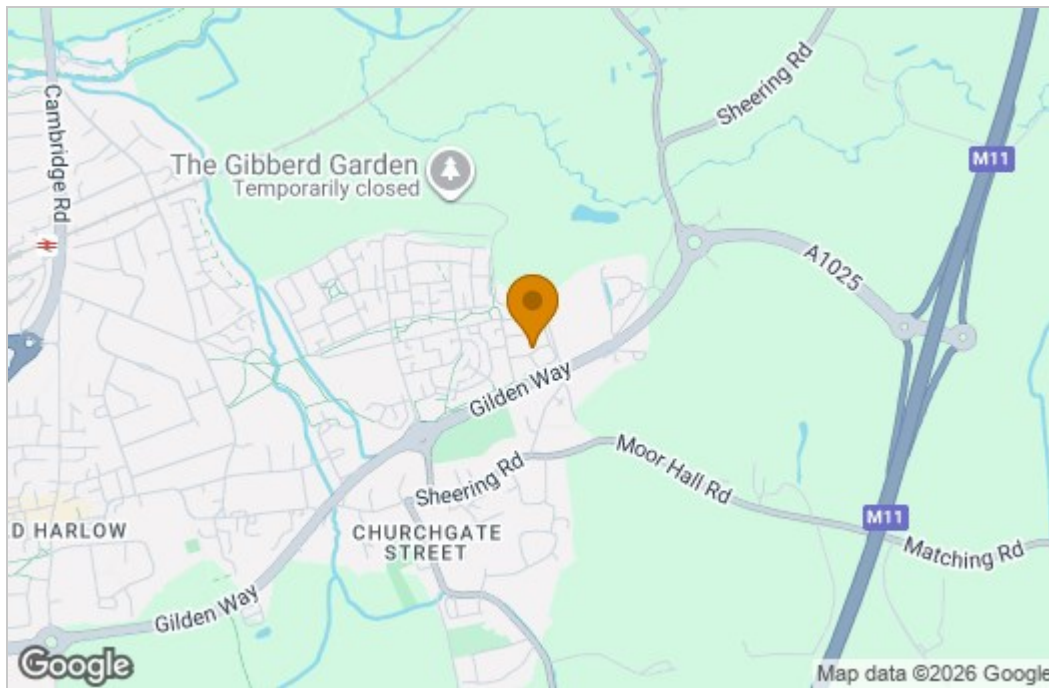


Total area: approx. 136.9 sq. metres (1473.9 sq. feet)

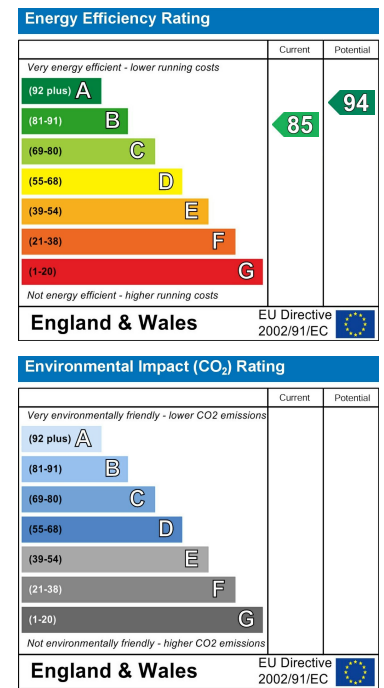
FOR ILLUSTRATIVE PURPOSES ONLY. NOT TO SCALE. Whilst every attempt had been made to ensure the accuracy of the floor plan shown, all measurements, positioning, fixtures, features, fittings and any other data shown are an approximate interpretation for illustrative purposes only and are not to scale. No responsibility is taken for any error, omission, misstatement or use of data shown.

Property marketing provided by www.fotomarketing.co.uk

Area Map



Energy Efficiency Graph



These particulars, whilst believed to be accurate are set out as a general outline only for guidance and do not constitute any part of an offer or contract. Intending purchasers should not rely on them as statements of representation of fact, but must satisfy themselves by inspection or otherwise as to their accuracy. No person in this firm's employment has the authority to make or give any representation or warranty in respect of the property.