



**Admiralty Way, TW11**  
**£1,795,000**

**Dexters**



## Admiralty Way, TW11

This four-story townhouse is situated in this incredibly popular development. It offers off-street parking, a garage, views over Royal Bushy Park, excellent entertaining space, and no onward chain.

The house is situated on the park side of this private development. The external stairs lead up to the raised ground floor where you find the kitchen/breakfast room and a spacious reception room across the rear of the house leading onto the terrace, which has wonderful views over the park.

On the ground floor there is a cloakroom, a utility room, and an integral garage. Over the first and second floors there are four double bedrooms, two have en suite bathrooms, and there is a family bathroom on the top floor.

Admiralty Way is located off the Queens Road, 0.3 miles from Teddington mainline station and Teddington High Street/Broad Street, which has many shops, bars and restaurants. One of the main entrances to Bushy Park is just 0.2 miles away.

### Features

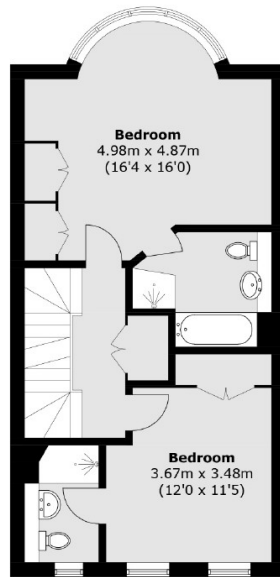
- Four Storey Townhouse
- Views Over Bushy Park
- Off-Street Parking
- Four Double Bedrooms
- Terrace And Private Garden
- In Excess of 2200 sq ft.



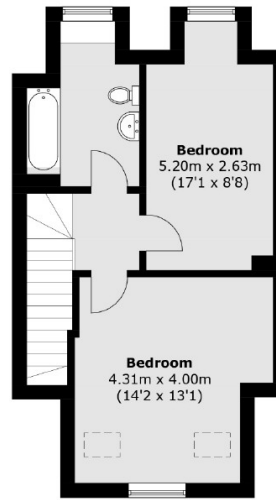




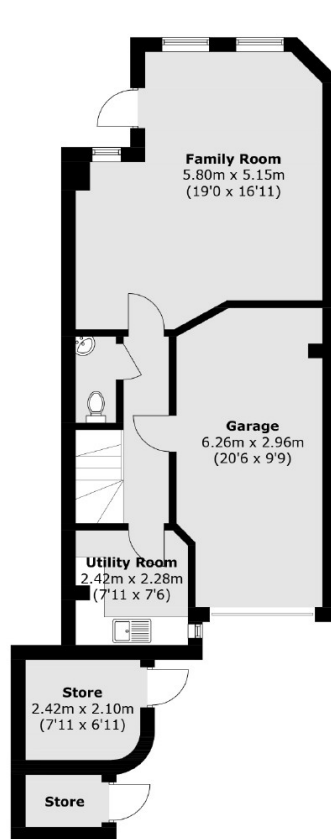
# Admiralty Way, Teddington, TW11



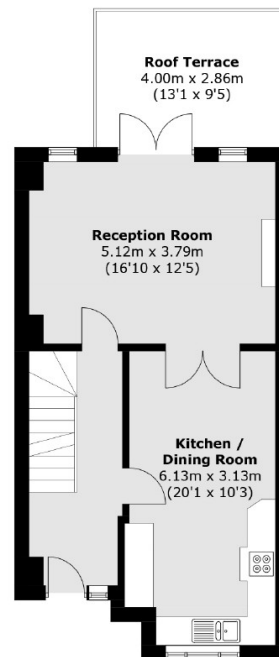
**First Floor**



**Second Floor**



**Lower Ground Floor**



**Upper Ground Floor**

Total area (approx.): 205.5 sq. m (2,211.9 sq. ft)

Store area : 7.0 sq. m (75.3 sq. ft)

Roof Terrace area : 11.4 sq. m (122.7 sq. ft)