



Webbs

Helping people move since 1994

Fullelove Road | Walsall | WS8 6BW
Offers In The Region Of £220,000

 **Webbs**
estate agents

Summary

**** FABULOUS SEMI-DETACHED HOME ** GENEROUS GARDENS ** POTENTIAL TO EXTEND ** GARAGE ** VERY WELL PRESENTED THROUGHOUT ** POPULAR LOCATION ** INTERNAL VIEWING IS ESSENTIAL ** RECENTLY REFURBISHED THROUGHOUT ** TWO DOUBLE BEDROOMS ** REFITTED FAMILY BATHROOM ** LOUNGE DINER ** MODERN REFITTED KITCHEN ** UTILITY ROOM ** UPVC DOUBLE GLAZING ** GAS CENTRAL HEATING ****

Webbs Estate Agents have pleasure in offering this well-presented and recently refurbished home, situated in a popular location, being close to all local amenities, shops, and schools. Briefly comprising: through the hallway, lounge diner, REFITTED kitchen and utility room with built in oven, hob and dishwasher. Granite sink. To the first floor there is a landing leading to two double bedrooms and REFITTED family bathroom. New boiler and radiators. Boiler is under warranty until 2028. Party walls have been insulated. Externally there is a garage, fore garden and generous rear garden. For a viewing contact our Aldridge office on 01922 288800.

Key Features

- SEMI DETACHED HOME
- LARGE REAR GARDEN
- 2 BEDROOMS
- REFITTED BATHROOM
- POPULAR LOCATION NEAR SCHOOLS
- CORNER PLOT
- GARAGE
- REFITTED KITCHEN
- UTILITY ROOM
- EARLY VIEWING ESSENTIAL

Rooms and Dimensions

Agents Note

THROUGH HALLWAY

LOUNGE / DINER

19'9" x 10'9" (6.02 x 3.29)

KITCHEN

7'6" x 10'2" (2.31 x 3.1)

UTILITY

5'4" x 12'10" (1.65 x 3.93)

FIRST FLOOR LANDING

BEDROOM ONE

13'10" x 9'1" (4.24 x 2.78)

BEDROOM TWO

10'4" x 8'11" (3.17 x 2.72)

REFITTED BATHROOM

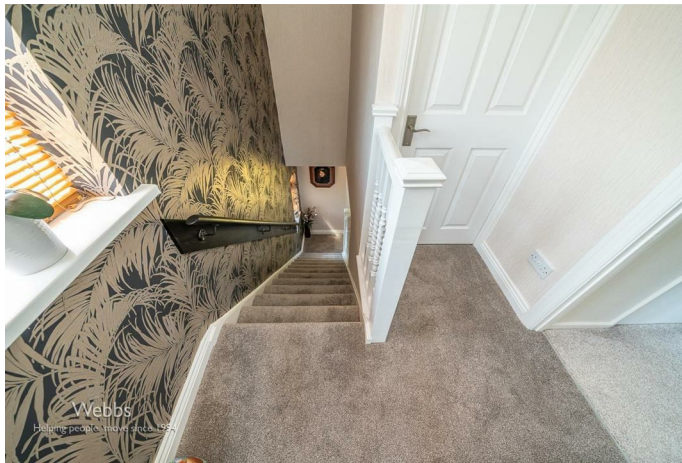
7'1" x 5'1" (2.18 x 1.57)

GARAGE

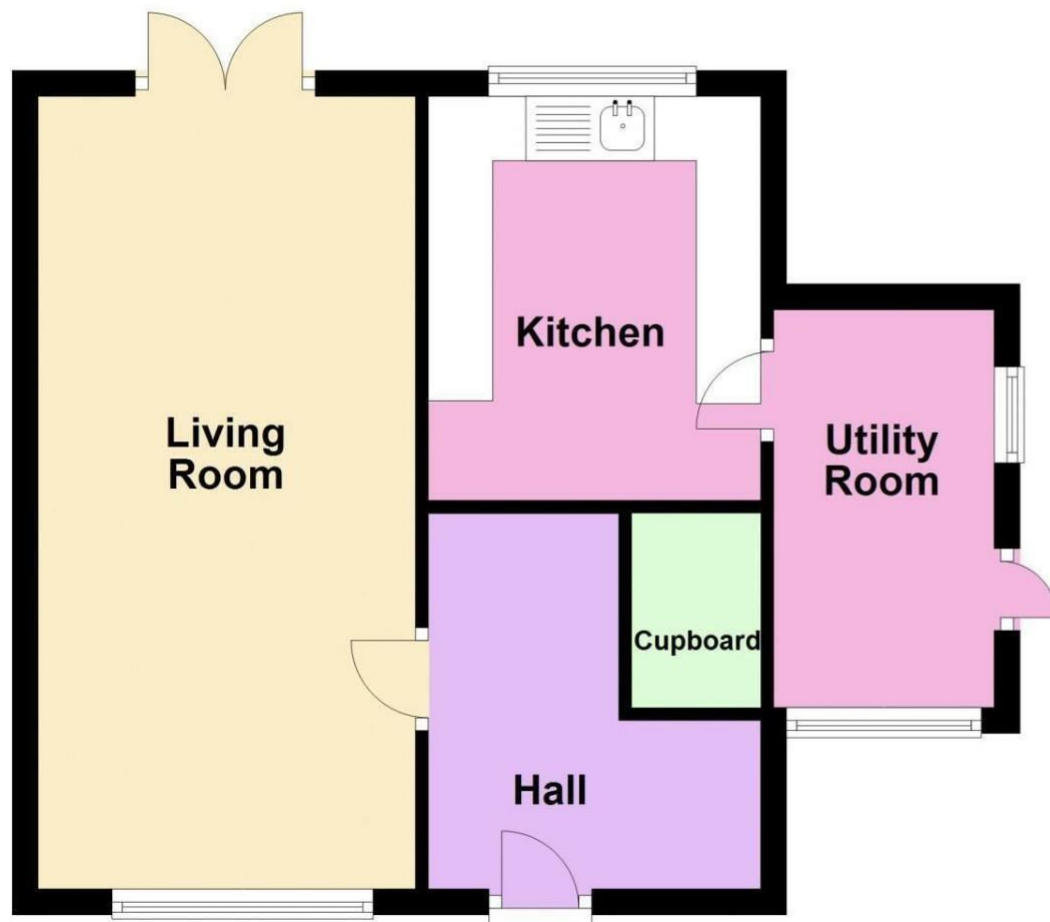
OUTSIDE

Identification Checks

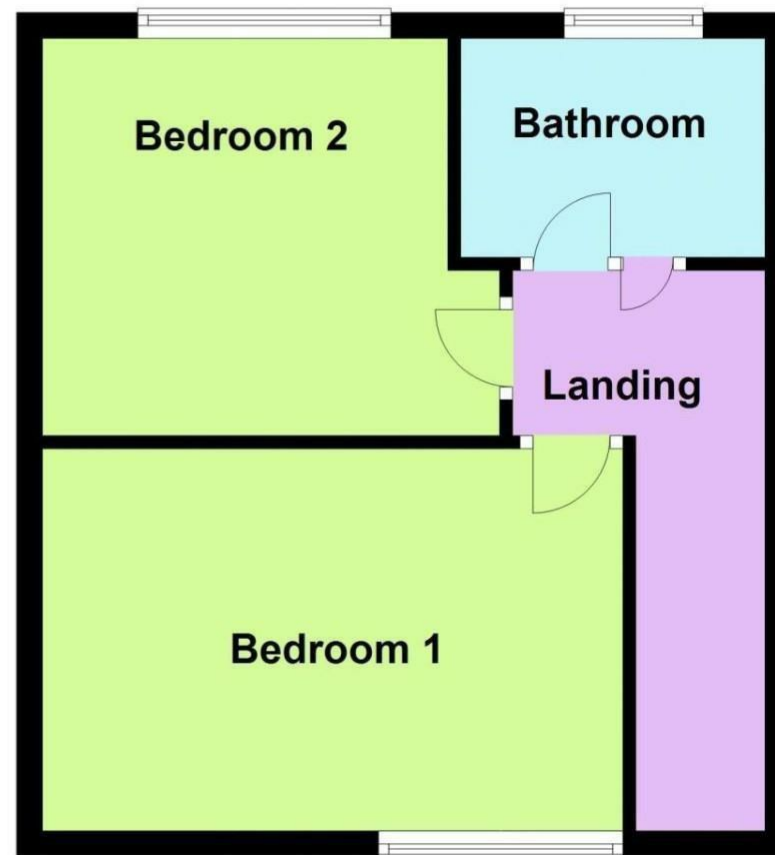




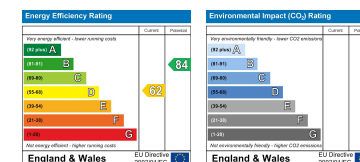
Ground Floor



First Floor



Webbs Estate Agents - endeavour to maintain accurate depictions of properties in Virtual Tours, Floor Plans and descriptions, however, these are intended only as a guide and purchasers must satisfy themselves by personal inspection.



28 High Street, Aldridge, Walsall, WS9 8LZ

Tel: 01922 288800 | Email: aldridge@webbestateagents.co.uk | www.webbestateagents.co.uk