

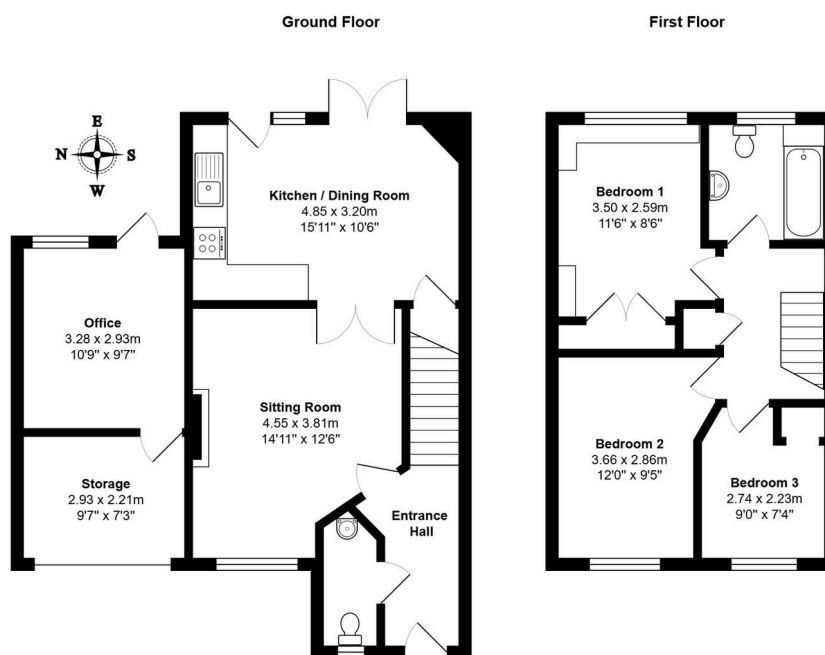
Sumerling Way, Bluntisham, Huntingdon, PE28 3XT

Guide Price £350,000

3 2 2



- Modern Link Detached Family Home
- Lounge Opening Into Kitchen/Dining Room
- Three Bedrooms With The Main Offering Fitted Wardrobes
- Partially Converted Single Garage To Create Home Office With Storage
- Nicely Kept Garden With Block Paved Seating Area And Neat Lawn
- Driveway Offering Off Road Parking
- Village Location Offering Everyday Amenities Within Walking Distance
- Move In Ready - Well Presented Throughout
- Virtual viewing upon request
- EPC Rating: D/67



Total Area: 93.0 m² ... 1001 ft² (excluding storage)

All measurements are approximate and for display purposes only

A three bedroom, modern link detached home in the vibrant village of Bluntisham. With the partial garage conversion creating a dedicated home office, whilst the village location places shops, gym, hairdressers, and pub all within comfortable walking distance. Perfect connectivity to St Ives and Cambridge via the guided busway completes the picture.