



15 Wolsey Close, Southwell, NG25 0AZ

Offers Over £199,950

Tel: 01636 816200

 **RICHARD
WATKINSON
PARTNERS**

Surveyors, Estate Agents, Valuers, Auctioneers

- A Dormer Style Bungalow
- Convenient Location
- Kitchen
- 2nd Reception/Ground Floor Bedroom
- 1st Floor En-suite Bedroom
- No Chain
- Retirement Living
- Lounge
- Ground Floor Bathroom
- Allocated Parking

A superb opportunity to purchase one of the larger homes on this popular and convenient development, available specifically for the over 55's and offering low maintenance living close to the wide range of amenities on offer in this popular Minster town.

The property benefits from uPVC double glazing and accommodation over 2 floors including an entrance hall with storage, a spacious lounge, fitted kitchen and useful ground floor bathroom plus a further room, currently used as a 2nd reception room but also providing the 2nd bedroom if required. To the 1st floor is a large bedroom with a useful en-suite shower room.

Outside the property includes an allocated parking space and overlooks a small landscaped garden to the rear.

ACCOMMODATION

An open fronted entrance porch with block paving and a slim-line cupboard to the side housing the electricity meter. A composite door leads into the entrance hall.

ENTRANCE HALL

With a staircase rising to the first floor and including a useful understairs storage cupboard. The hallway provides access to the ground floor accommodation and includes a wall mounted electric radiator by Gabarron.

LOUNGE

Situated at the front of the property with a Gabarron radiator, coved ceiling, a uPVC double glazed window to the front aspect and a feature Adam style fireplace with decorative surround housing an electric fire.

KITCHEN

Fitted with a range of base and wall cabinets with rolled edge worktops and tiled splashbacks, an inset 1.5 bowl composite sink with mixer tap and space for appliances including plumbing for a washing machine. There is a uPVC double glazed window to the rear aspect and a central heating radiator.

GROUND FLOOR BEDROOM/SECOND RECEPTION SPACE

A versatile room at the rear of the property with coved ceiling, a uPVC double glazed French door leading onto the rear garden and a Gabarron radiator.

GROUND FLOOR BATHROOM

Fitted with a three piece suite including a close coupled toilet, a pedestal wash basin with hot and cold taps and a panel sided bath with hot and cold taps and Mira Sport electric shower over. There is an electric towel radiator, an extractor fan and a wall mounted fan heater.

FIRST FLOOR LANDING

With access to the first floor bedroom suite.

BEDROOM SUITE

A large double bedroom on the first floor of the property with a Gabarron radiator, a uPVC double glazed dormer window to the front aspect with views over Southwell at the surrounding countryside. There is an airing cupboard housing the Ideal Instinct hot water cylinder with immersion heater then two double built-in double wardrobes with hanging rail and shelving, one having an access hatch to the eaves.

FIRST FLOOR SHOWER EN-SUITE

Fitted with a three piece suite including a close coupled toilet, a pedestal wash basin with hot and cold taps and a shower enclosure with Mira Sport electric shower and glazed door. There is tiling for splashbacks, an electric towel radiator, a Velux skylight with fitted blind, an electric shaver point and a built-in cupboard with slatted shelving.

PARKING & GARDENS

The property features a designated parking spot to the front whilst to the rear of the property there is a small paved patio area edged with trellising and climbing plants.

SERVICE CHARGE ESTIMATE

The new monthly estimate from 1st January 2025 is shown as £86.51 per month to include a management charge, communal window cleaning, maintenance of the communal areas, buildings insurance, and CCTV/Smart charge.

This is paid to Nottingham Community Housing Association (NCHA)

The property is leasehold, with a 99 year lease commencing 1999.

COUNCIL TAX

The property is registered as council tax band C.

VIEWINGS

By appointment with Richard Watkinson & Partners.

ADDITIONAL INFORMATION

Please see the links below to check for additional information regarding environmental criteria (i.e. flood assessment), school Ofsted ratings, planning applications and services such as broadband and phone signal. Note Richard Watkinson & Partners has no affiliation to any of the below agencies and cannot be responsible for any incorrect information provided by the

individual sources.

Flood assessment of an area: _

<https://check-long-term-flood-risk.service.gov.uk/risk#>

Broadband & Mobile coverage:-

<https://checker.ofcom.org.uk/en-gb/broadband-coverage>

School Ofsted reports:-

<https://reports.ofsted.gov.uk/>

Planning applications:-

<https://www.gov.uk/search-register-planning-decisions>

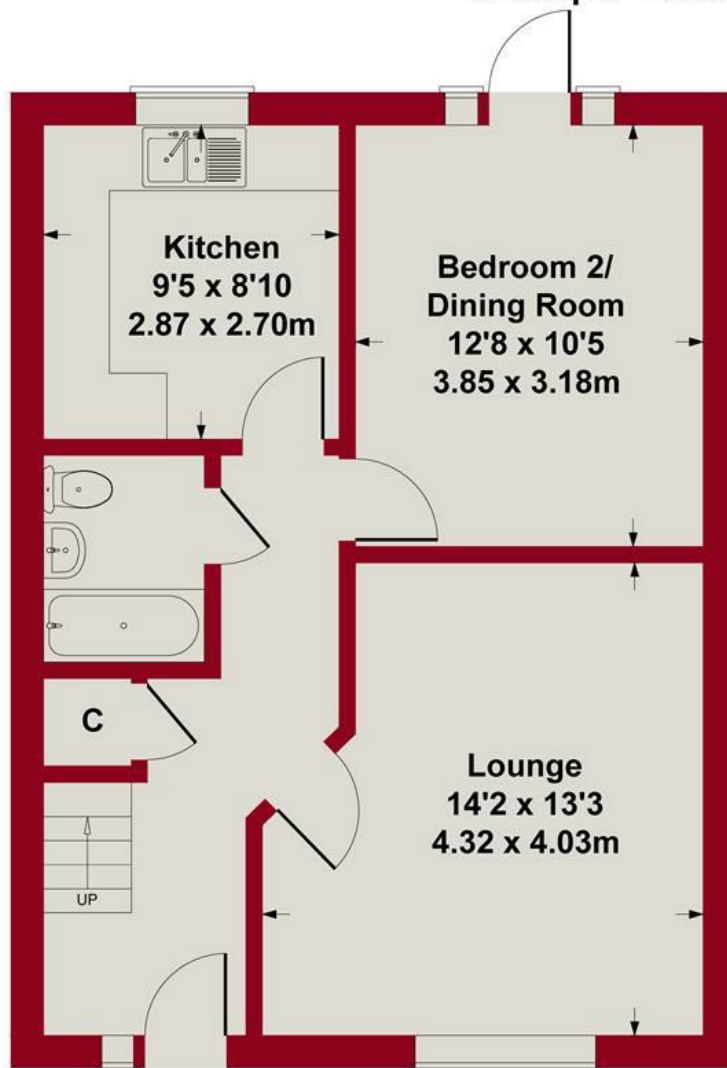
Once an offer is accepted, there will be a small charge for our biometric Anti Money Laundering compliance check of £14 + VAT per purchaser.



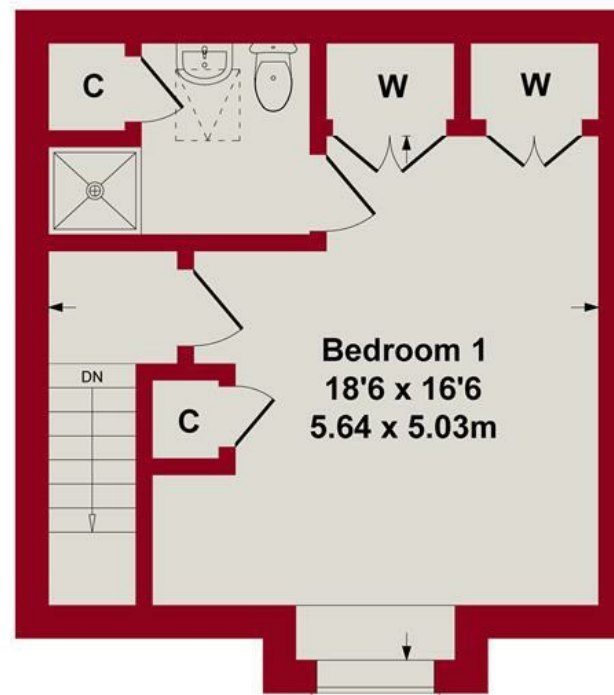




Approximate Gross Internal Area
826 sq ft - 76.75 sq m



GROUND FLOOR

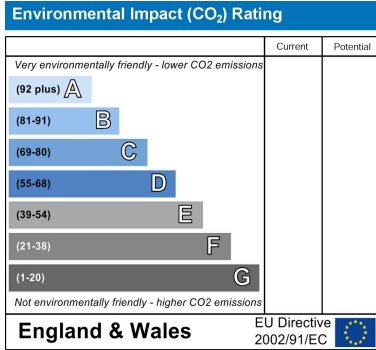
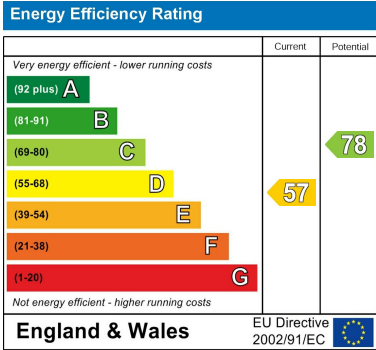


FIRST FLOOR

Whilst every attempt has been made to ensure the accuracy of the floor plan contained here, measurements of doors, windows, rooms and any other items are approximate and no responsibility is taken for any error, omission, or mis-statement. The measurements should not be relied upon for valuation, transaction and/or funding purposes. This plan is for illustrative purposes only and should be used as such by any prospective purchaser or tenant. The services, systems and appliances shown have not been tested and no guarantee as to their operability or efficiency can be given.

Copyright V360 Ltd 2025 | www.houseviz.com





These particulars, whilst believed to be accurate are set out as a general outline only for guidance and do not constitute any part of an offer or contract. Intending purchasers should not rely on them as statements of representation of fact, but must satisfy themselves by inspection or otherwise as to their accuracy. No person in this firm's employment has the authority to make or give any representation or warranty in respect of the property. Any fixtures and fittings not mentioned in these details are excluded from the sale price. No services or appliances which may have been included in these details have been tested by the selling agent and therefore cannot be guaranteed to be in good working order.

As part of the service we offer we may recommend ancillary services to you such as mortgage advice, solicitors and surveyors which we believe will help with your property transaction. We wish to make you aware that should you decide to proceed we may receive a referral fee or equivalent. This could be a fee, commission, payment or other reward. We will not refer your details unless you have provided consent for us to do so. You are not under any obligation to provide us with your consent or to use any of these services. You are also free to choose an alternative provider.

Thinking of selling? For a FREE no obligation quotation call 01636 816200



Richard Watkinson & Partners is the trading name of Richard Watkinson Ltd.
Registered in England. Ltd Registration number: 07140024

20 King Street,
Southwell NG25 0EH
Tel: 01636 816200
Email: southwell@richardwatkinson.co.uk

