



Phelps Lane, NW7

£5,500 Per calendar month

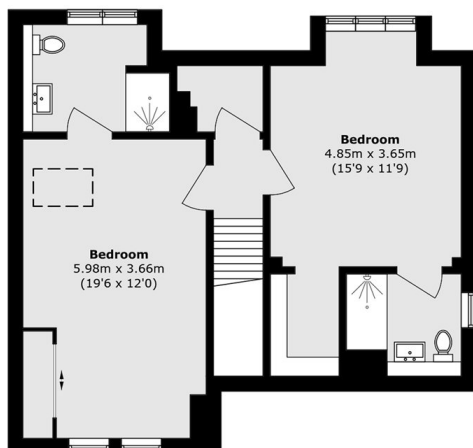
This well presented, modern five bedroom detached home offers bright, balanced living space throughout. The property offers five double bedrooms, a family bathroom/ WC and three ensuites, a separate kitchen and living space, a utility room, and well-maintained front and back gardens. The property also benefits from a garage and parking for two cars.

Located on a peaceful residential road in the popular Mill Hill, NW7 area, the home is close to a wide range of local shops, cafés, and highly regarded schools. Excellent transport connections, including Mill Hill Broadway station, allow for convenient travel into Central London.

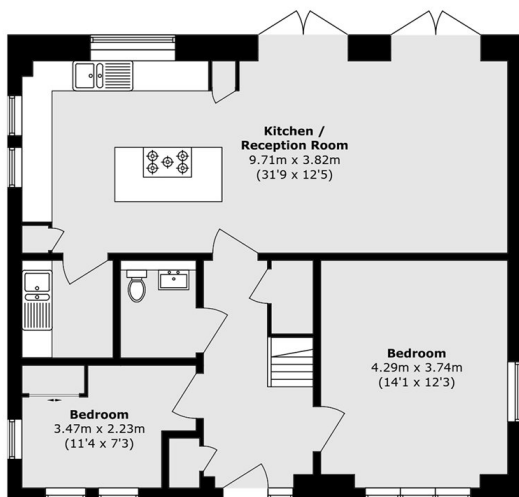
Features

- Five Double Bedrooms
- Five Bedrooms
- Utility Room
- Private Garden
- Garage
- Parking

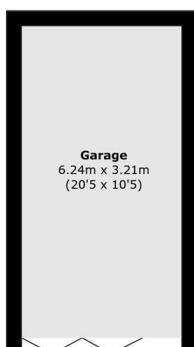
Phelps Lane, London, NW7



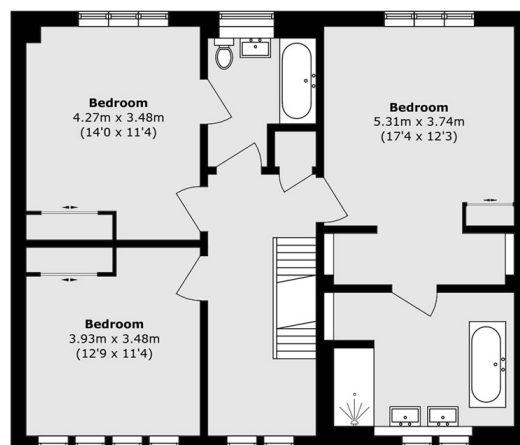
Second Floor



Ground Floor



Ground Floor



First Floor

Total area (approx.): 227.2 sq. m (2445.6 sq. ft)

Garage area (approx.): 20.0 sq. m (215.3 sq. ft)