



Score	Energy rating	Current	Potential
92+	A		
81-91	B		
69-80	C	70 C	75 C
55-68	D		
39-54	E		
21-38	F		
1-20	G		

Pennys Estate Agents Limited for themselves and for the vendor of this property whose agents they are give notice that:- (1) These particulars do not constitute any part of an offer or a contract. (2) All statements contained in these particulars are made without responsibility on the part of Pennys Estate Agents Limited. (3) None of the statements contained in these particulars are to be relied upon as a statement or representation of fact. (4) Any intending purchaser must satisfy himself/herself by inspection or otherwise as to the correctness of each of the statements contained in these particulars. (5) The vendor does not make or give and neither do Pennys Estate Agents Limited nor any person in their employment has any authority to make or give any representation or warranty whatever in relation to this property.

Flat 2 The Gables, 18 Cranford Avenue, Exmouth, EX8 2HU

GUIDE PRICE

£249,950

TENURE Leasehold



A Peacefully Located, Purpose Built Ground Floor Flat Forming Part Of A Small Development Of Just Twelve Apartments With Communal Gardens, Garage And Visitors Parking

Reception Hall * Good Size Lounge/Dining Room * Kitchen/Breakfast Room
Two Large Double Bedrooms * Shower Room/Wc * Gas Central Heating
Double Glazed Windows * To Be Sold With A 999 Year Lease On Completion
No Ongoing Chain

Flat 2 The Gables, 18 Cranford Avenue, Exmouth, EX8 2HU

THE ACCOMMODATION COMPRISES: Communal entrance and hallway. The apartment is found on the ground floor approached via front door giving access to:

RECEPTION HALL: Radiator, deliveries cupboard housing electric meter and electric consumer unit, coats cupboard, linen cupboard, further storage cupboard.

LOUNGE/DINING ROOM: 5.18m x 3.51m (17'0" x 11'6") A lovely size room with large double glazed window and door opening onto the covered SUN TERRACE overlooking the communal gardens. Wooden fire surround housing electric living flame fire, TV point, radiator.

KITCHEN/BREAKFAST ROOM: 3.81m x 2.69m (12'6" x 8'10") Fitted with wood-effect working surfaces with tiled surrounds, cupboards, drawer units, plumbing for automatic washing machine beneath worktops, inset single drainer sink unit, gas and electric cooker point, wall mounted Vaillant gas boiler for hot water and central heating, radiator, double glazed window to front aspect.

BEDROOM 1: 5.26m including doorway recess x 3.33m (17'3" x 10'11") A lovely size main bedroom with large double glazed window again gaining lovely views over the communal gardens, radiator.

BEDROOM 2: 3.96m x 2.95m (13'0" x 9'8") Another good size bedroom with radiator and double glazed window to front aspect.

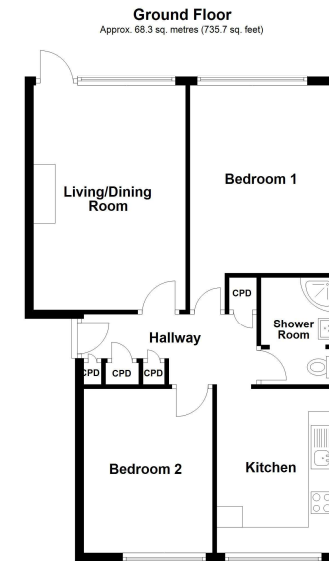
SHOWER ROOM/WC: 2.49m x 1.68m (8'2" x 5'6") Fitted with a good size shower cubicle with curved shower splash screen doors, shower unit, splashback walls, pedestal wash hand basin with tiled splashback and fitted mirror with light shaver socket, WC, ceiling extractor fan, radiator, mirror fronted medicine cabinet.

OUTSIDE: The Gables enjoys a secluded position approached via long driveway, which leads to the development. From the driveway there is a GARAGE plus visitors parking. Communal gardens surround the property which is mainly laid to lawn with mature colourful flower and shrub beds. Directly from the lounge is a covered SUN TERRACE which in turn gives direct access out onto the rear communal gardens.

GARAGE: With up and over door.

TENURE: The property is to be sold with a 999 year lease. **SERVICE CHARGE:** To be confirmed. Ground Rent: N/a

FLOOR PLAN:



Total area: approx. 68.3 sq. metres (735.7 sq. feet)

Whilst every attempt has been made to ensure the accuracy of the floor plan contained here, measurements of floors, windows, rooms and any other item are approximate and no responsibility is taken for any error, omission or misstatement. This plan is for illustrative purposes only. Floorplan carried out by [epolutions.co.uk](http://www.epolutions.co.uk). Plan produced using PlanUp.

Flat 2, EXMOUTH