



Apple Tree Farm Workhouse Lane

, Burbage, LE10 3AS
 Price Guide £900,000

*** GUIDE PRICE - £900,000-£1,000,000 ***

Nestled along a serene country lane in Burbage, Leicestershire, this exceptional 5/6 bedroom detached residence embodies refined luxury and contemporary elegance. The property features secure gates opening onto a spacious driveway, capable of accommodating over 10 vehicles.

Ground Floor:

Upon entry, a grand open entrance lobby, also serving as a dining area, welcomes you with its spaciousness and grace. To the left is an open-plan dining kitchen with integrated appliances and exquisite finishes, with bifolding doors leading to the rear patio. Adjacent to this is a stylish reception room. On the opposite side, find a generous main reception room with a cozy log burner, leading to a versatile space currently used as a 6th bedroom with an ensuite, ideal for guests or as a cinema room. A convenient WC is also on this level.

First Floor:

Ascend the staircase to an open galleried landing, leading to five double bedrooms, each offering an oasis of relaxation. The family bathroom features a freestanding bath and meticulous

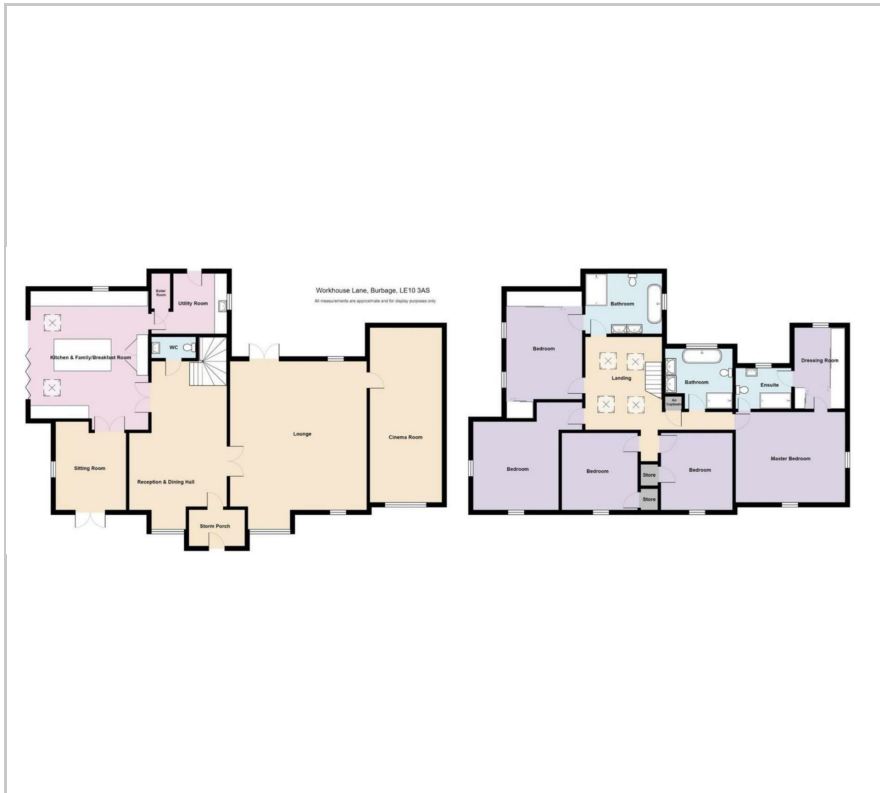
- Huge Equestrian Potential
- 4300sqft Of Living Accommodation
- 5 Bedrooms
- 4 Bathrooms
- Cinema Room
- High Spec Open/Plan Dining Kitchen
- Highly Private Position
- 0.5 Acre Plot
- Two Double Garages - Ancillary Accommodation Above

Viewing

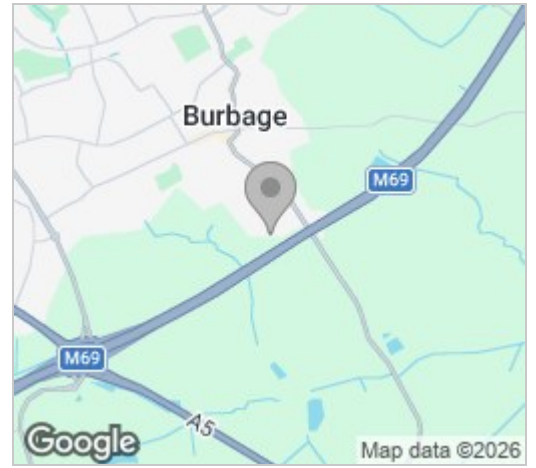
Please contact our Berkley Leicester Office on 0116 2544755 if you wish to arrange a viewing appointment for this property or require further information.

5
 4
 4
 E

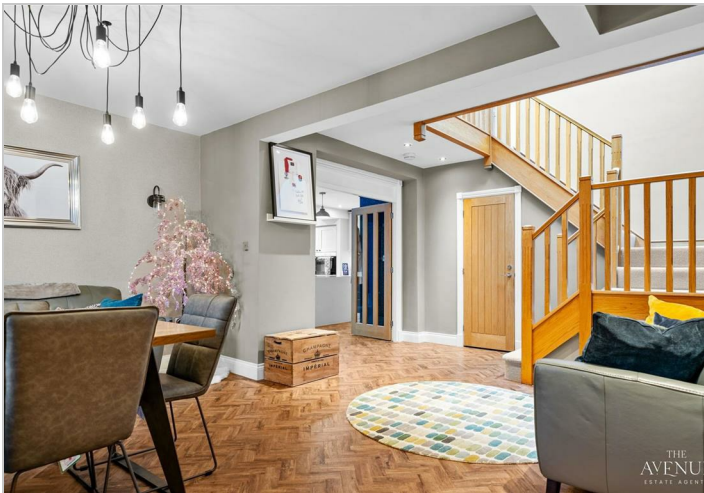
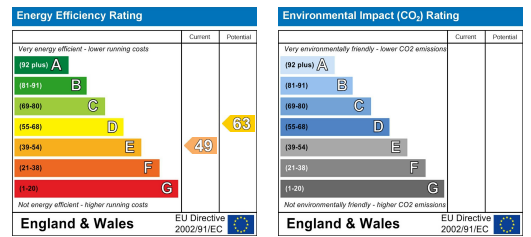
Floor Plan



Area Map



Energy Efficiency Graph



These particulars, whilst believed to be accurate are set out as a general outline only for guidance and do not constitute any part of an offer or contract. Intending purchasers should not rely on them as statements of representation of fact, but must satisfy themselves by inspection or otherwise as to their accuracy. No person in this firm's employment has the authority to make or give any representation or warranty in respect of the property.