



## ROYAL PLACE, SE10

£1,400,000

Georgian period townhouse

Fully renovated

Three bedrooms

Extended kitchen

South west facing garden

Energy rating: c

@marshandparsons  
marshandparsons.co.uk

MARSH &  
PARSONS

# ABOUT THE PROPERTY

Three storey Georgian period house, tastefully renovated throughout, extended to the rear and the owners are selling chain free. The interior comprises an entrance hallway with dual aspect double reception room. Refurbished and boasting period features including a working fireplace and restored wood floors. There is also one bedroom to this floor.

First floor has been redesigned as a suite and comprises the principal bedroom, separate dressing room and traditionally appointed bathroom featuring a marble shower enclosure and freestanding roll-top bath. Space has been further maximised with built in wardrobes.







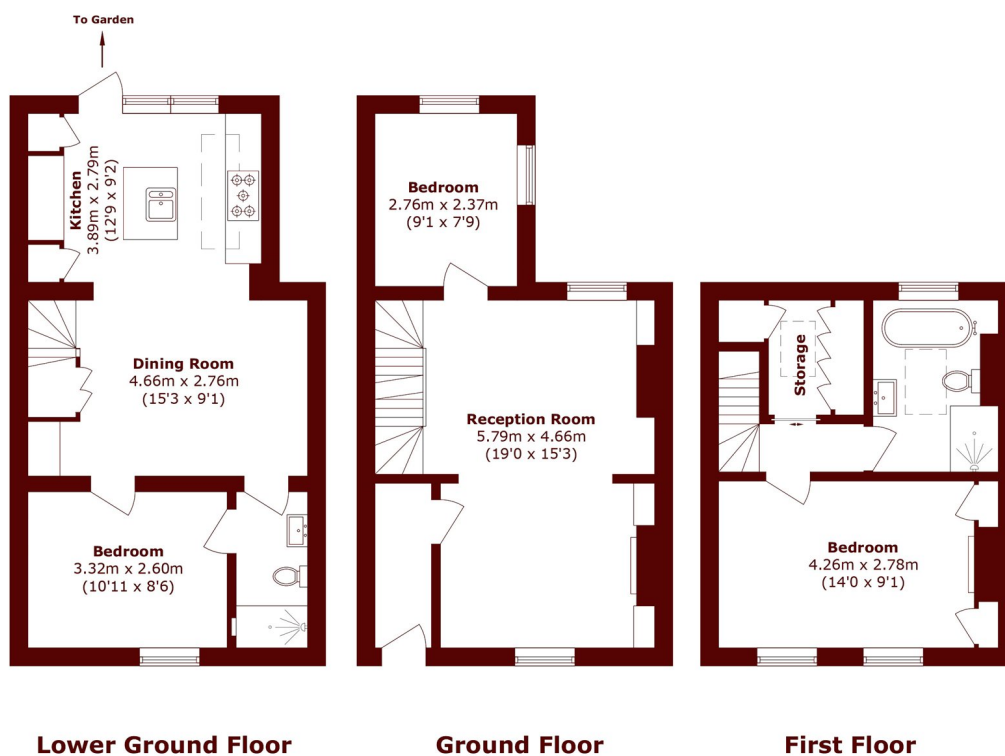
# FURTHER DETAILS

The lower ground floor has been extended to include a large kitchen/diner. Features include handmade shaker-style kitchen, built in storage, bespoke steel French doors and a large roof window allowing floods of light. This floor also comprises a double bedroom with en suite Jack and Jill shower room. To the rear, the French doors open out onto a south west facing patio and raised garden.

Moments away from Royal Place there are some beautiful pubs and specialist shops, including a greengrocer, fishmonger, and butcher. Greenwich rail and DLR stations are a short walk away, as are the beautiful royal park and town centre, the covered market, Greenwich pier and many riverside pubs, coffee shops and supermarkets.



# STEP INSIDE ROYAL PLACE



Total area (approx.): 100.4 sq. m (1080.7 sq. ft)

Greenwich  
020 8312 8312

Energy Rating: C We aim to make our particulars both accurate and reliable. However, they are not guaranteed; nor do they form part of an offer or contract. If you require clarification on any points then please contact us, especially if you're traveling some distance to view. Please note that appliances and heating systems have not been tested and therefore no warranties can be given as to their good working order

MARSH &  
PARSONS