



**£3,600 Per Month** Downend Road | Fishponds | Bristol | BS16 5AR

[www.kendallharper.com](http://www.kendallharper.com) | [lettings@kendallharper.com](mailto:lettings@kendallharper.com)

**Kendall Harper**



# Downend Road | Fishponds | Bristol | BS16 5AR

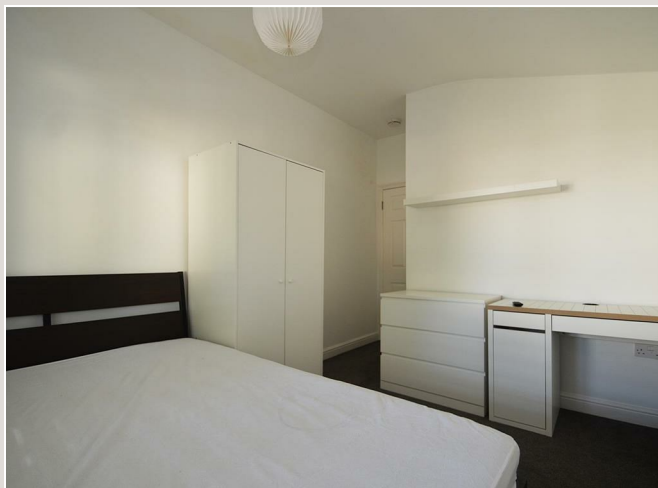
Nestled on Downend Road in the vibrant area of Fishponds, Bristol, this recently refurbished six-bedroom student HMO presents an exceptional opportunity for those seeking modern living in a prime location. The property is in excellent condition throughout, making it an ideal choice for students.


Upon entering, you are welcomed by a spacious entrance hall that leads to a comfortable downstairs double bedroom. The inviting sitting room is equipped with a large television, creating a perfect environment for relaxation and socialising. The modern kitchen is fully fitted with appliances, ensuring convenience for all your culinary needs, and a utility area adds to the practicality of the space. A well-appointed shower room on the ground floor enhances the functionality of the accommodation.

Venturing to the first floor, you will find four additional double bedrooms, each designed to provide ample space and comfort. A further modern shower room on this level ensures that all residents have easy access to facilities. The top floor boasts a converted loft, which has been transformed into a spacious sixth double bedroom, offering a private retreat for its occupant.

The property benefits from gas central heating and double glazing, ensuring warmth and energy efficiency throughout the year. A private rear garden provides a delightful outdoor space for





Energy Efficiency Rating		
	Current	Potential
Very energy efficient - lower running costs		
(92 plus) <b>A</b>		
(81-91) <b>B</b>		
(69-80) <b>C</b>		<b>80</b>
(55-68) <b>D</b>	<b>58</b>	
(39-54) <b>E</b>		
(21-38) <b>F</b>		
(1-20) <b>G</b>		
Not energy efficient - higher running costs		
<b>England &amp; Wales</b>	EU Directive 2002/91/EC	

These particulars, whilst believed to be accurate, are set out as a general outline only for guidance and do not constitute any part of an offer or contract. Intending purchasers should not rely on them as statements of representation of fact, but must satisfy themselves by inspection or otherwise as to their accuracy. No person in this firm's employment has the authority to make or give any representation or warranty in respect of the property.

