



NORTH BLOCK, SE1

£550,000

Residents of County Hall Apartments enjoy exclusive access to a 24-hour concierge service, a fully equipped gymnasium, and an indoor swimming pool. The property offers a spacious living and dining area, separate kitchen, double bedroom and secure underground parking.

- Offers Over £550,000
- 2 Bedrooms
- 2 Bathrooms
- 678 Sq Ft
- Waterloo
- Gym



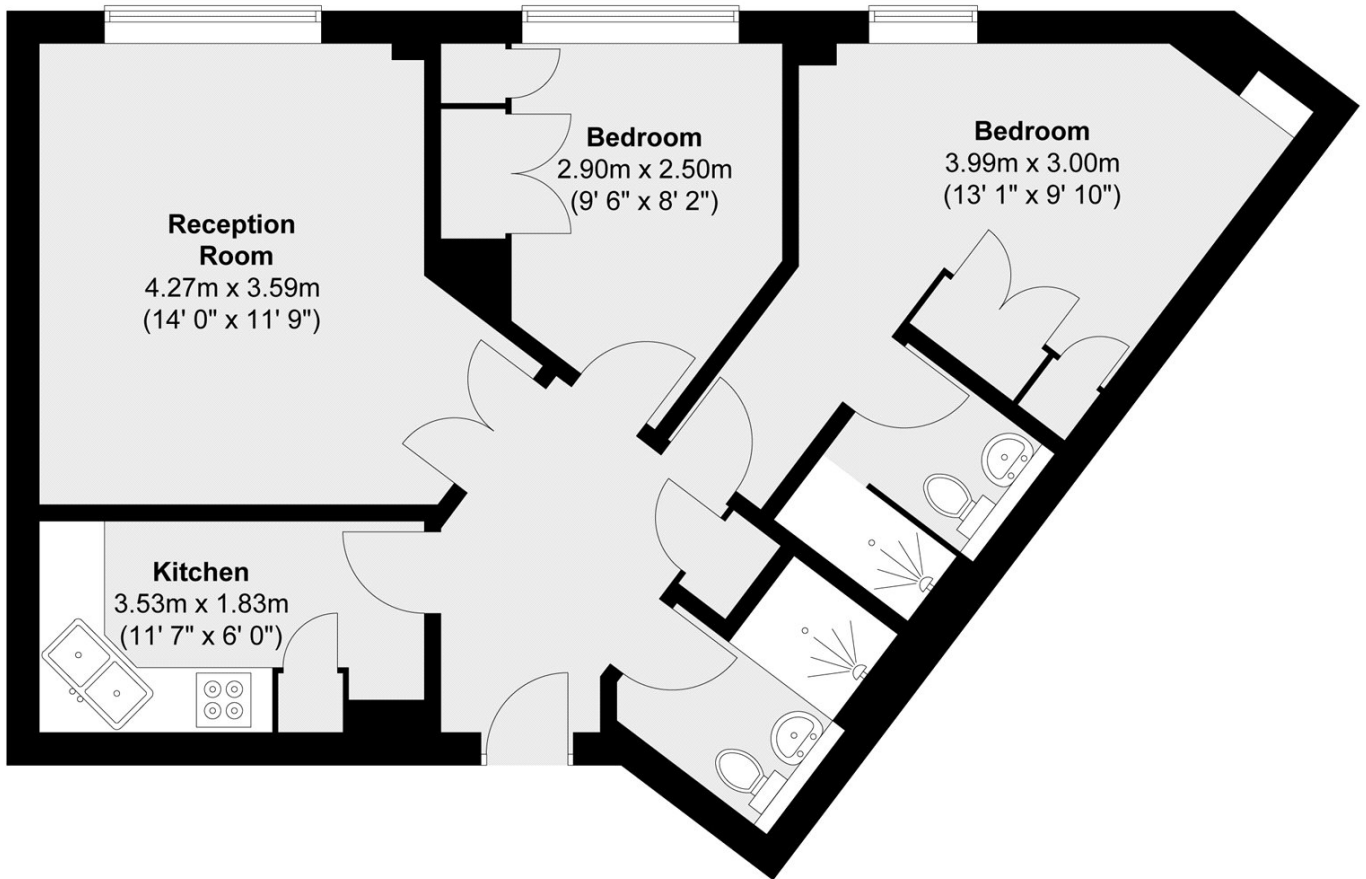
ABOUT THE HOME

Perfectly positioned just behind the London Eye and moments from the vibrant South Bank, County Hall delivers prime London living at its finest.





Second Floor



Total area (approx.) : 63 sq. m (678 sq. ft)

LiFE RESIDENTIAL

252 Westminster Bridge
Road, London, SE1 7PD
Sales: 020 7476 0125
Lettings: 020 7620 1600

Energy Rating: C. We aim to make our particulars both accurate and reliable. However they are not guaranteed; nor do they form part of an offer or contract. If you require clarification on any points then please contact us, especially if you're traveling some distance to view. Please note that appliances and heating systems have not been tested and therefore no warranties can be given as to their good working order.