



Murillo Road, SE13
£650,000

Dexters



Murillo Road, SE13

Located in the heart of Hither Green, this three-bedroom period property offers generous accommodation and exciting potential for improvement and extension, subject to the usual planning consents.

The house features two spacious reception rooms with high ceilings and period character, alongside a separate kitchen to the rear. Upstairs, there are three well-proportioned bedrooms, including two doubles, and a family bathroom.

Further benefits include a basement, loft space and ample storage throughout. Externally, the garden offers excellent scope to create a larger living space or a private outdoor retreat.

Perfectly placed near Hither Green and Lewisham stations, this home offers fast, convenient links to Central London via National Rail, DLR, and bus routes. Excellent local shops, cafés, pubs, and everyday amenities are all close by.

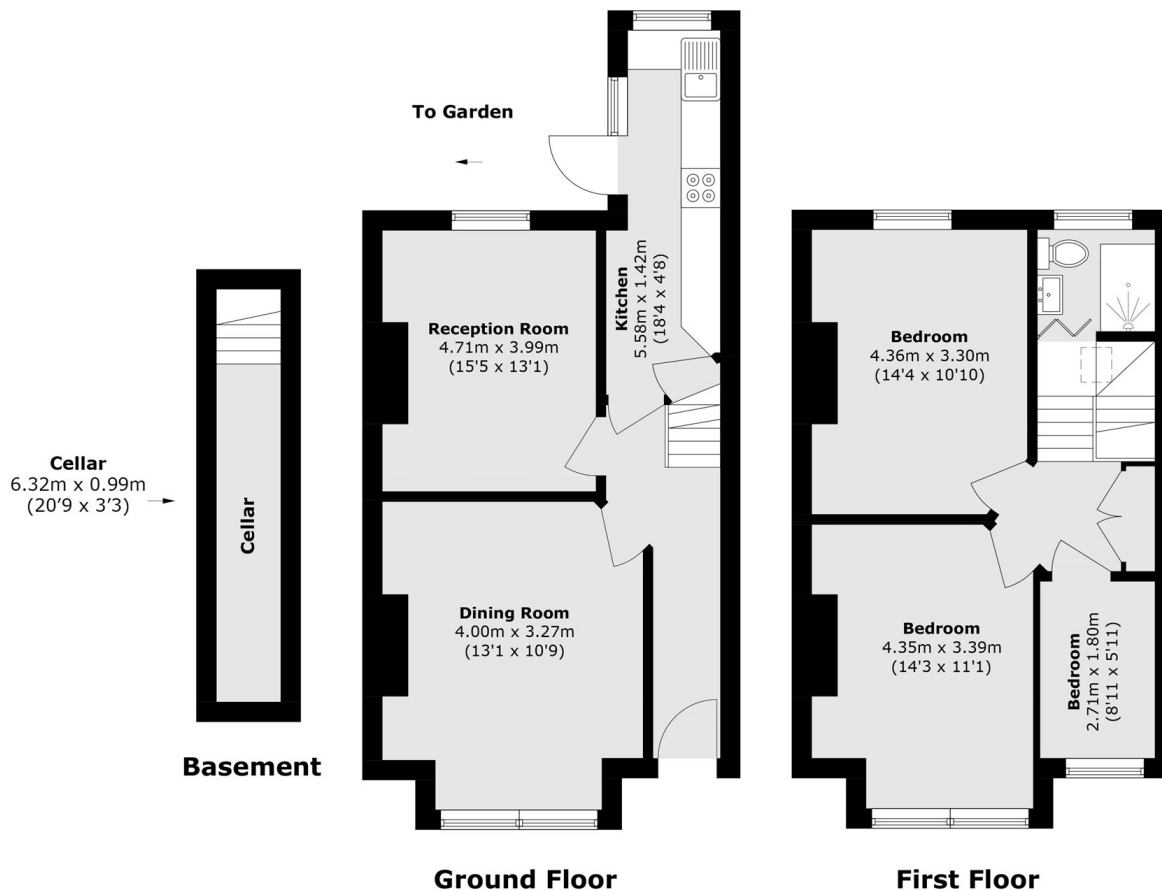
Murillo Road is a firm favourite with families, thanks to nearby schools, Manor House Gardens, and a lively community atmosphere, celebrated by the annual street party.

Features

- No Upward Chain
- Three Bedrooms
- Two Reception Rooms
- Potential to Extend (STPP)
- Enclosed Rear Garden
- In need of Modernisation



Murillo Road, London, SE13



Total area (approx.): 98.8 sq. m (1063.4 sq. ft)
(Including Cellar)