



**ADAM
HALLIWELL**

POWERED BY
exp UK

Olivine Crescent, Bishops Cleeve, Cheltenham, GL52

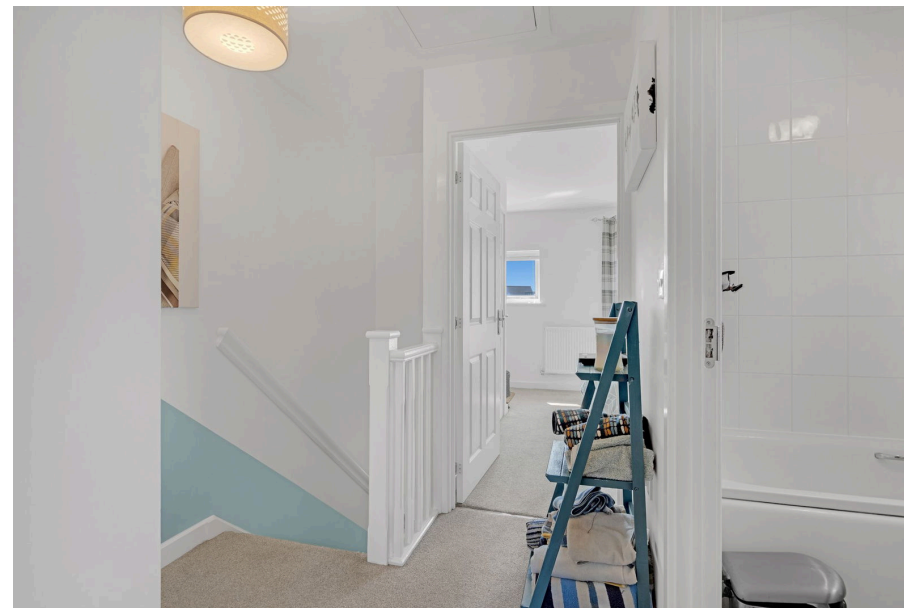
£285,000

🛏️ 2 🪑 1 🚗 1



- 2019 built
- Large 38' x 35' Rear garden
- Kitchen diner onto the garden
- Bathroom with side window
- Open spaces and walks nearby
- Two double bedrooms
- Parking for 2 cars
- EPC B including solar panels
- Shops, gym and coffee shop on the development
- Access to cycling routes nearby





This modern, energy-efficient two-bedroom semi-detached house, built in 2019 and featuring a superbly large rear garden, spacious open-plan living, private parking, and solar panels, offers a stylish and practical home ideal for first-time buyers or downsizers in a desirable location close to local amenities and green spaces.



Call us on
01242 906 586 | 07861 238 913

adamhalliwell@exp.uk.com

Orlando, Old Reddings Road, The Reddings, Cheltenham, GL51 6SA

adam.halliwell.exp.uk.com

Agents Note: Whilst every care has been taken to prepare these particulars, they are for guidance purposes only. All measurements are approximate and are for general guidance purposes only and whilst every care has been taken to ensure their accuracy, they should not be relied upon and potential buyers are advised to recheck the measurements.