



## 3 bedroom Semi-Detached House located in Harwich.

Asking Price Of  
**£300,000**



JOHN ALEXANDER  
ESTATE AGENTS

Find us on..



JOHN ALEXANDER  
ESTATE AGENTS

# Ashley Road Harwich CO12 4AW

## FULL DESCRIPTION

### THE OVERVIEW

\*\*\*Asking Price Of £300,000\*\*\*

Featuring this well-presented three-bedroom semi-detached family home, offering off-road parking to the front, a well-maintained garden, and a beautifully presented interior, this property is perfect for family living.

### THE HOME

Upon entering the property through the porch, you are welcomed into the entrance hall, with stairs rising to the first floor and access to a convenient ground floor WC.

To the front of the home is a bright and spacious living room featuring a bay window, which flows openly through to the dining area, creating an ideal space for both relaxing and entertaining.

To the rear of the property is the fitted kitchen, offering a range of wall and base units along with access overlooking the rear garden.

The first floor landing provides access to three well-proportioned bedrooms, including two generous double bedrooms and a third bedroom that is also capable of accommodating a double bed. The principal bathroom is fitted with a modern suite, while an additional shower room adds further

convenience for family living. The principal bathroom is fitted with a modern suite, while an additional shower room adds further convenience for family living.

### THE OUTSIDE

Externally, the property benefits from a driveway to the front providing off-road parking. To the rear is a lovely, well-maintained garden featuring both a patio seating area and a laid lawn, creating the perfect space for outdoor enjoyment. The garden also benefits from a side gate providing convenient access to the front of the property.

### THE LOCATION

The property is positioned on a sought-after road within a popular residential area, conveniently located close to local schools and a range of nearby amenities, making it an excellent location for families and commuters alike.



3



2



1



B



EPC

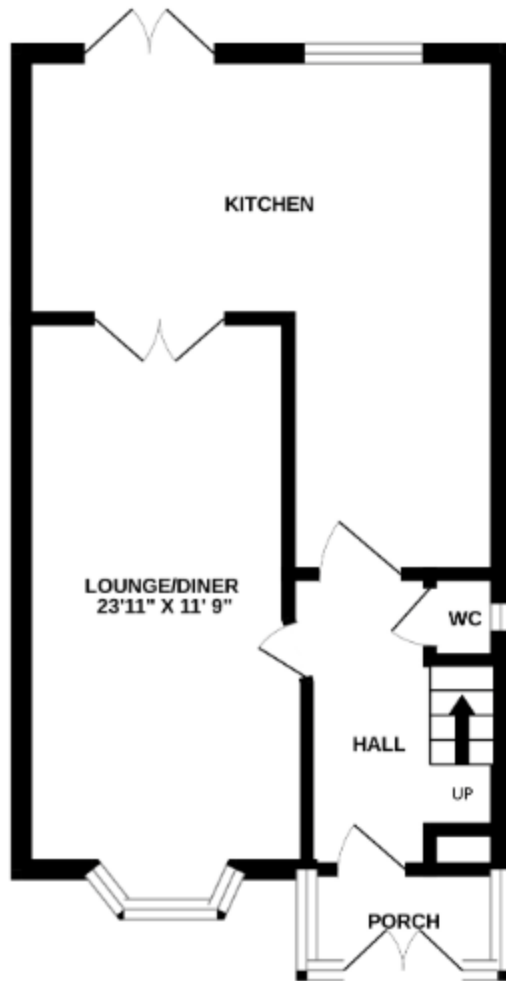
D





## FLOORPLAN

GROUND FLOOR



1ST FLOOR



## DIRECTIONS

### CONTACT

288 High Street  
Harwich  
Essex  
CO12 3PD

E [enquiries@john-alexander.co.uk](mailto:enquiries@john-alexander.co.uk)

T 01255 520007

[www.john-alexander.co.uk](http://www.john-alexander.co.uk)

Find us on..



**JOHN ALEXANDER**  
ESTATE AGENTS