



PALACE COURT, W2

£3,500 per month

An exceptionally refurbished apartment located in a beautiful location close to Hyde Park

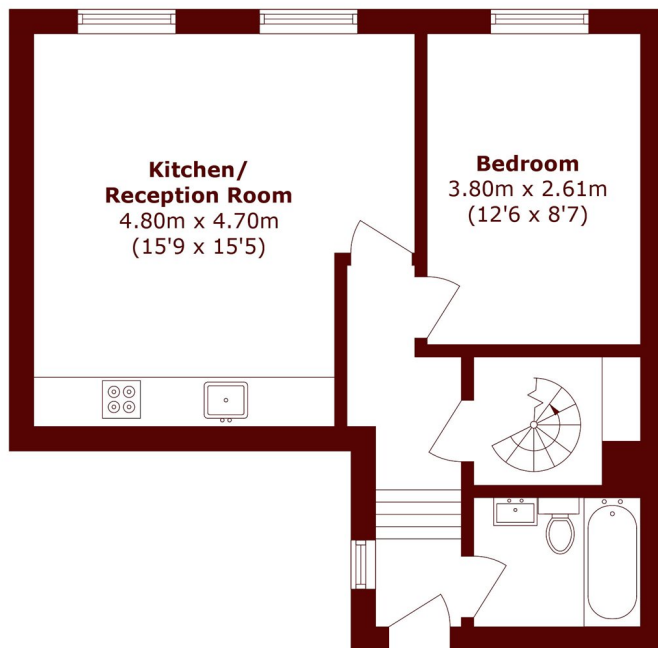
Two double bedrooms
Impeccable décor
Flooded with natural light

Wooden Floors
Unrivalled location
EPC - E

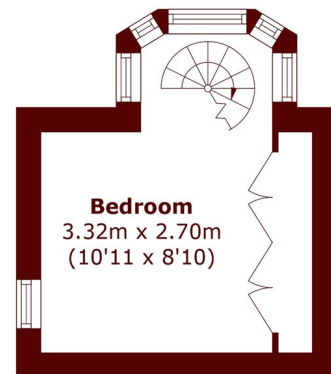
@marshandparsons
marshandparsons.co.uk

MARSH &
PARSONS

STEP INSIDE PALACE COURT



First Floor



Second Floor

Total area (approx): 54.3 sq. m (584.4 sq. ft)

Notting Hill
020 7313 6910

Energy Rating: E We aim to make our particulars both accurate and reliable. However, they are not guaranteed; nor do they form part of an offer or contract. If you require clarification on any points then please contact us, especially if you're traveling some distance to view. Please note that appliances and heating systems have not been tested and therefore no warranties can be given as to their good working order

**MARSH &
PARSONS**