



Connells
01865 244 781
FOR SALE

Connells

Turnpike Road
BICESTER

Property Description

Connells have pleasure in bringing to the market this well presented terrace property in the sought after Caversfield area.

The property boasts a bright living room with a fireplace feature that leads to the kitchen diner boasting a beautiful, tiled floor. Upstairs, the property boasts two double bedrooms and a family bathroom, whilst the rear garden provides space for relaxing with its decking area that benefits from some fence lighting.

Caversfield is mainly situated between the B4100 and the A421. The property itself is approximately 1.1 miles from Bicester North station (connecting to Chiltern Railways line between Birmingham and London Marylebone) and approximately 2.5 miles from Bicester Village station (connecting to the Chiltern Railways line between Oxford and London Marylebone).



Entrance Hall

Wood panel flooring, access to living room and stairs

Living Room

Wood panel flooring, fireplace feature with electric fire, window to front of property, access to kitchen dinner

Kitchen Diner

Stone tile flooring, wall and base units, integrated oven and gas hob, space for washing machine, dishwasher and fridge freezer, under stairs storage area, window and door to rear garden

Landing

Carpet, loft access point, access to bedrooms and bathroom

Bedroom One

Spacious double bedroom, carpet, built in storage, window to front of property

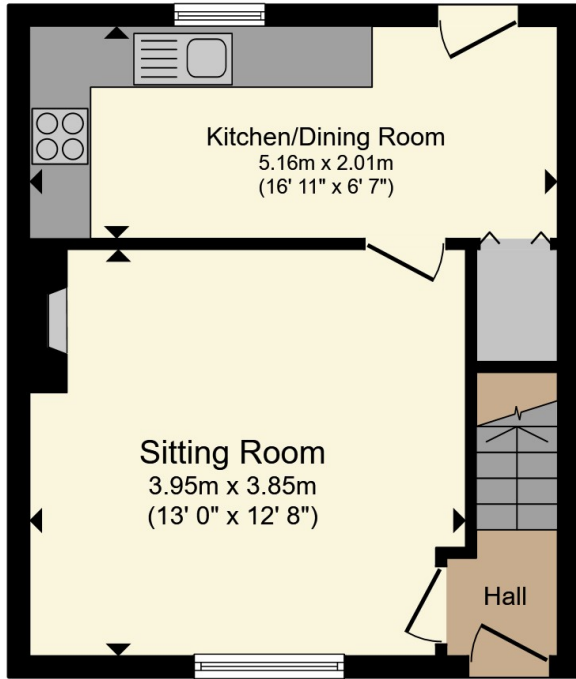
Bedroom Two

Double bedroom, carpet, window to rear of property

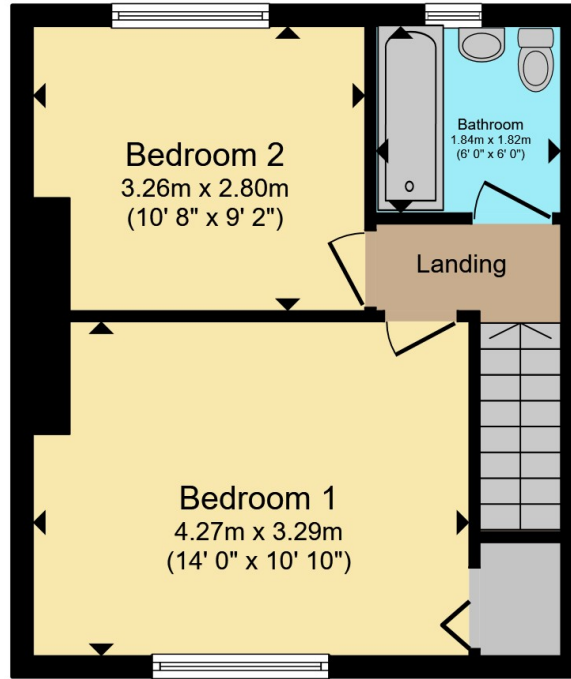
Bathroom

Tiled floor and partially tiled walls, bath with overhead shower, glass screen, wc, basin, towel rail, window to rear of property





Ground Floor



First Floor

Total floor area 64.1 m² (690 sq.ft.) approx

This floor plan is for illustrative purposes only. It is not drawn to scale. Any measurements, floor areas (including any total floor area), openings and orientation are approximate. No details are guaranteed, they cannot be relied upon for any purpose and they do not form part of any agreement. No liability is taken for any error, omission or misstatement. A party must rely upon its own inspection(s). Powered by www.propertybox.io



To view this property please contact Connells on

T 01869 244761
E bicester@connells.co.uk

5 Market Square
BICESTER OX26 6AA

EPC Rating: D Council Tax Band: B

Tenure: Freehold

view this property online connells.co.uk/Property/BIC309716



1. MONEY LAUNDERING REGULATIONS Intending purchasers will be asked to produce identification documentation at a later stage and we would ask for your co-operation in order that there will be no delay in agreeing the sale. 2. These particulars do not constitute part or all of an offer or contract. 3. The measurements indicated are supplied for guidance only and as such must be considered incorrect. Potential buyers are advised to recheck measurements before committing to any expense. 4. We have not tested any apparatus, equipment, fixtures, fittings or services and it is in the buyers interest to check the working condition of any appliances.

Connells Residential is registered in England and Wales under company number 1489613, Registered Office is Cumbria House, 16-20 Hockliffe Street, Leighton Buzzard, Bedfordshire, LU7 1GN. VAT Registration Number is 500 2481 05.

See all our properties at www.connells.co.uk | www.rightmove.co.uk | www.zoopla.co.uk

Property Ref: BIC309716 - 0002