



Hyde Park Street, Hyde Park W2



Hyde Park Street, Hyde Park W2

Situated adjacent to Hyde Park in a handsome stucco-fronted grade II blue plaque building, and formerly the residence of W. H Smith Smith, this 4th floor duplex penthouse is impressive from the moment you enter the main entrance to the building. From a grand and beautifully maintained communal entrance hall, the apartment is accessed via a lift.

Entering the penthouse you are greeted with a wide corridor with natural light pouring through from the skylight above. The apartment offers a large modern kitchen and a bright, spacious, dual aspect reception room with high ceilings and far reaching views towards Hyde Park. With three double bedrooms and two bathrooms, this special penthouse offers versatile luxury living.



Guide price: £2,950,000

Tenure: Leasehold: approximately 149 years remaining

Service charge: £29,217 per annum, reviewed every year, next review due 2026

Ground rent: Peppercorn

Local authority: City of Westminster

Council tax band: H









Location

Local transport links include Paddington mainline (Network Rail and Heathrow Express) and the underground (Elizabeth, District, Circle, Bakerloo and Hammersmith and City lines) station plus close access to the Central Line at Lancaster Gate and Marble Arch.



Located moments from the local cafes and boutique shops of Connaught Village and the green open spaces of Hyde Park.

HYDE PARK STREET, W2

Approximate Gross Internal Area : 178.5 Sq. metres
1921 Sq. feet
(Excluding Basement of 2.6 Sq. metres
27 Sq. feet)

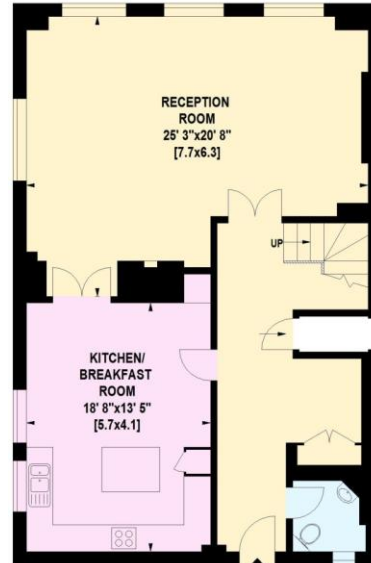
STORAGE
5' 11" x 5' 3"
[1.8x1.6]



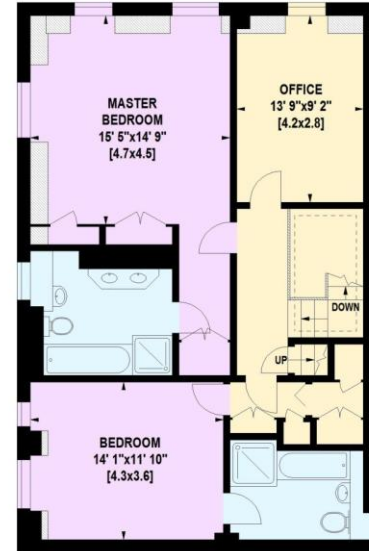
Under 1.5m head height



BASEMENT



FOURTH FLOOR



FIFTH FLOOR

This plan is for guidance only and must not be relied upon as a statement of fact. Attention is drawn to the important notice on the last page of the text of the Particulars.

Knight Frank
Hyde Park
1 Craven Terrace
London
W2 3QD

[knightfrank.co.uk](https://www.knightfrank.co.uk)

I would be delighted to tell you more

Carlton Ruth

+44 2034356456

carlton.ruth@knightfrank.com



Fixtures and fittings: A list of the fitted carpets, curtains, light fittings and other items fixed to the property which are included in the sale (or may be available by separate negotiation) will be provided by the Seller's Solicitors.
Important Notice: 1. Particulars: These particulars are not an offer or contract, nor part of one. You should not rely on statements by Knight Frank LLP in the particulars or by word of mouth or in writing ("information") as being factually accurate about the property, its condition or its value. Neither Knight Frank LLP nor any joint agent has any authority to make any representations about the property, and accordingly any information given is entirely without responsibility on the part of the agents, seller(s) or lessor(s). 2. Photos, Videos etc: The photographs, property videos and virtual viewings etc. show only certain parts of the property as they appeared at the time they were taken. Areas, measurements and distances given are approximate only. 3. Regulations etc: Any reference to alterations to, or use of, any part of the property does not mean that any necessary planning, building regulations or other consent has been obtained. A buyer or lessee must find out by inspection or in other ways that these matters have been properly dealt with and that all information is correct. 4. VAT: The VAT position relating to the property may change without notice. 5. To find out how we process Personal Data, please refer to our Group Privacy Statement and other notices at <https://www.knightfrank.com/legals/privacy-statement>.

Particulars dated August 2023. Photographs and videos dated August 2023.

Knight Frank is the trading name of Knight Frank LLP. Knight Frank LLP is a limited liability partnership registered in England and Wales with registered number OC305934. Our registered office is at 55 Baker Street, London W1U 8AN where you may look at a list of members' names. If we use the term 'partner' when referring to one of our representatives, that person will either be a member, employee, worker or consultant of Knight Frank LLP and not a partner in a partnership. If you do not want us to contact you further about our services then please contact us by either calling 020 3544 0692, email to marketing.help@knightfrank.com or post to our UK Residential Marketing Manager at our registered office (above) providing your name and address.