



Buller Road, North Fambridge CM3

Guide Price £950,000

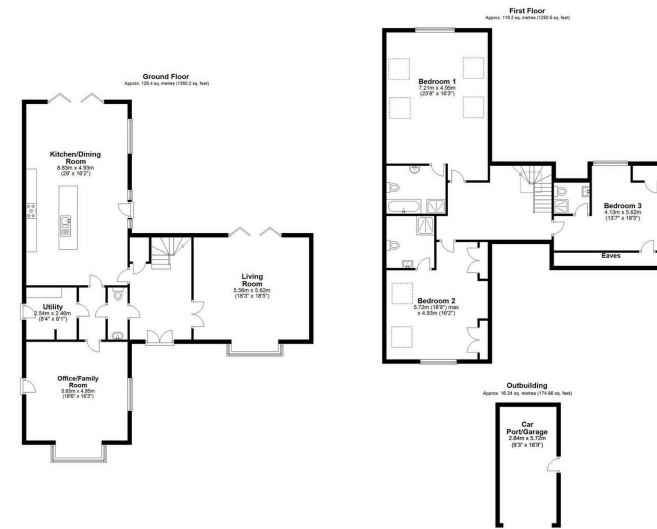
🛏️ 4 🚗 3 🛋️ 3

- Air Source Heat Pump Heating
- Solar Panels
- Grey Water Harvesting System
- Large Home Office (Bedroom 4 Downstairs)
- Large Private Driveway
- Highly Economical Home
- Three Ensuite Bedrooms (Upstairs)
- Premium 'Wolf' & 'Sub Zero' Kitchen Appliances
- Open Plan Kitchen/ Family Room

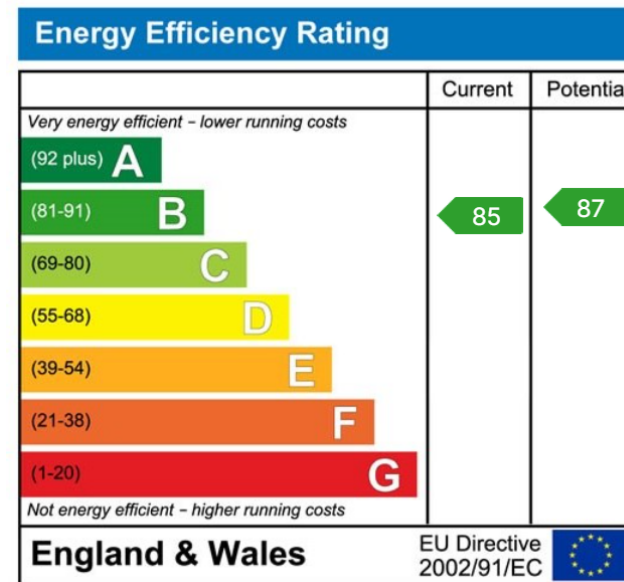


Surrounded by open countryside a short walk to the main line station at North Fambridge, a stylish barn style home tucked away private road close to amenities, the waterside and road links.





Total area approx. 258.84 sq. metres (2785.5 sq. feet)
 FOR ILLUSTRATIVE PURPOSES ONLY. NOT TO SCALE.
 Whilst every attempt has been made to ensure the accuracy of the floor plan shown, all measurements, positioning, fixtures, features, fittings and any other data shown are an approximate interpretation for illustrative purposes only and are not to scale. No responsibility is taken for any error, omission, mis-statement or use of data shown.



FINE & COUNTRY MID & SOUTH ESSEX

1st Floor, 101-135 Kings Road, Brentwood, Essex, CM14 4DR

T 01277 714044 | E middlessex@fineandcountry.com

fineandcountry.com

