

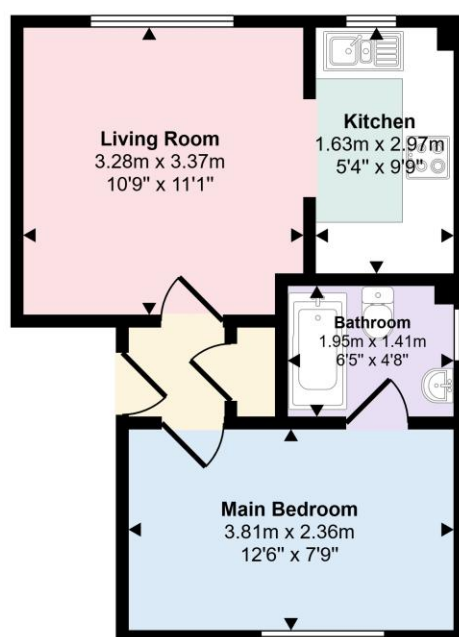
Charlock Court |
Price £850 pcm



Located in a quiet cul de sac on the popular Poets Estate in Newport Pagnell this first floor one (double) bedroom apartment with spacious open plan living accommodation is now available and would suit either a young professional or single person.

- Viewings to be booked via
`Book a Viewing` button
- One Double bedroom first floor flat
- Spacious Living Accommodation
- Allocated Parking
- Nil Deposit Option
- EPC band C
- Council Tax Band A (£1573.73)
- Available 31st December

Approx Gross Internal Area
31 sq m / 335 sq ft



Floorplan

This floorplan is only for illustrative purposes and is not to scale. Measurements of rooms, doors, windows, and any items are approximate and no responsibility is taken for any error, omission or mis-statement. Icons of items such as bathroom suites are representations only and may not look like the real items. Made with Made Snappy 360.