





## 24 Greenway Road, Shipston-on-stour, CV36 4EA

Guide Price £475,000

 4  2

Tucked away at the end of a quiet road, this chain-free four-bedroom detached bungalow sits on a generous corner plot with wrap-around gardens, ample driveway parking, and a detached garage. Just a short walk from the historic and vibrant town centre, the property offers light and spacious accommodation including a large living/dining room, fitted kitchen, and a sunny conservatory overlooking the garden – all combining to create flexible, single-storey living in a wonderfully private setting.

**Floor Area**  
1340 sq. ft.

**Tenure**  
Freehold

**Service Charge**  
£0 per annum

**Ground Rent**  
£0 per annum



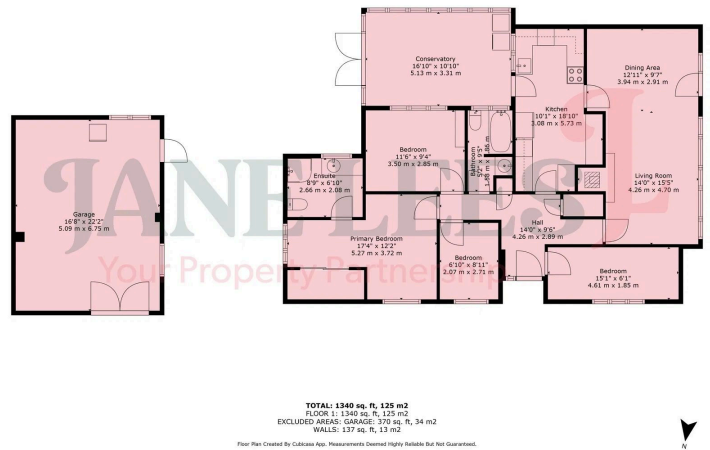
**W** [janelees.co.uk](http://janelees.co.uk) **T** 01789 576 065 **E** [jane@janelees.co.uk](mailto:jane@janelees.co.uk)

Buy Me, Sell Me Happy Houses Ltd Registered Office: Building 18, Gateway 1000, Whittle Way, Arlington Business Park, Stevenage, England, SG1 2FP  
Trading address: 20a Chapel Street, Stratford-upon-Avon, England, CV37 6EP | Company Registration Number: 13086728 | Vat Number: 433396194

**ico.**  
Information Commissioner's Office

**The Property Ombudsman**

- Chain-Free Sale
- Detached Four-Bedroom Bungalow
- Generous Corner Plot
- Detached Garage & Ample Parking
- Close to Cotswolds Countryside
- Large Principal Bedroom with En-Suite
- Mix of Lawn and Paved Patio for Relaxing or Entertaining
- Bright Sunny Aspect
- Sought-After Market Town



Score	Energy rating	Current	Potential
92+	A		
81-91	B		82 B
69-80	C		
55-68	D	67 D	
39-54	E		
21-38	F		
1-20	G		

