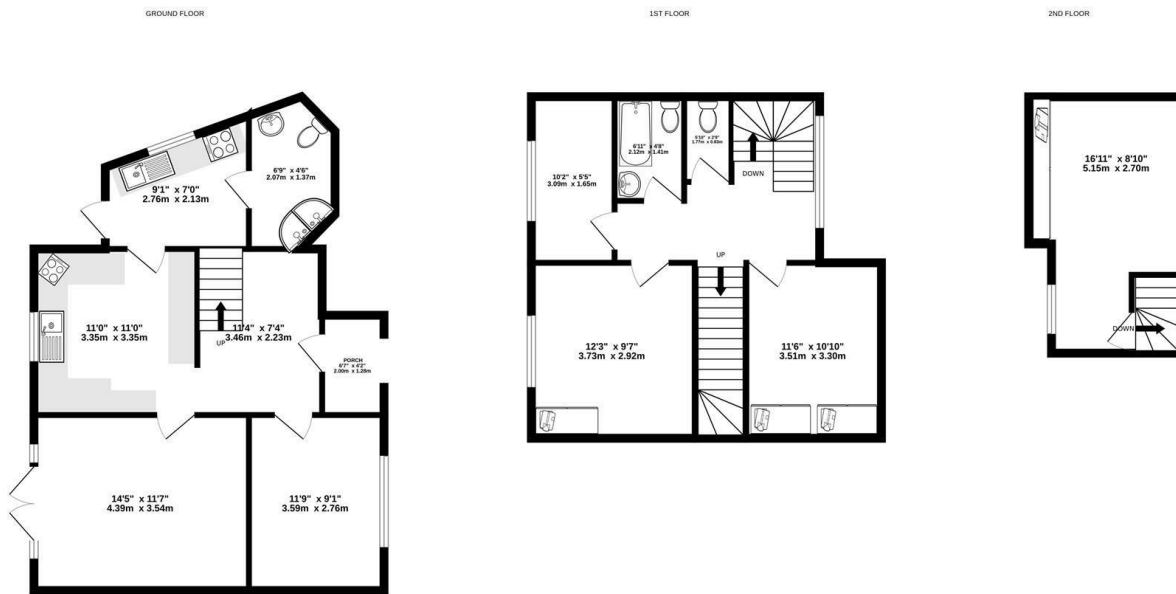




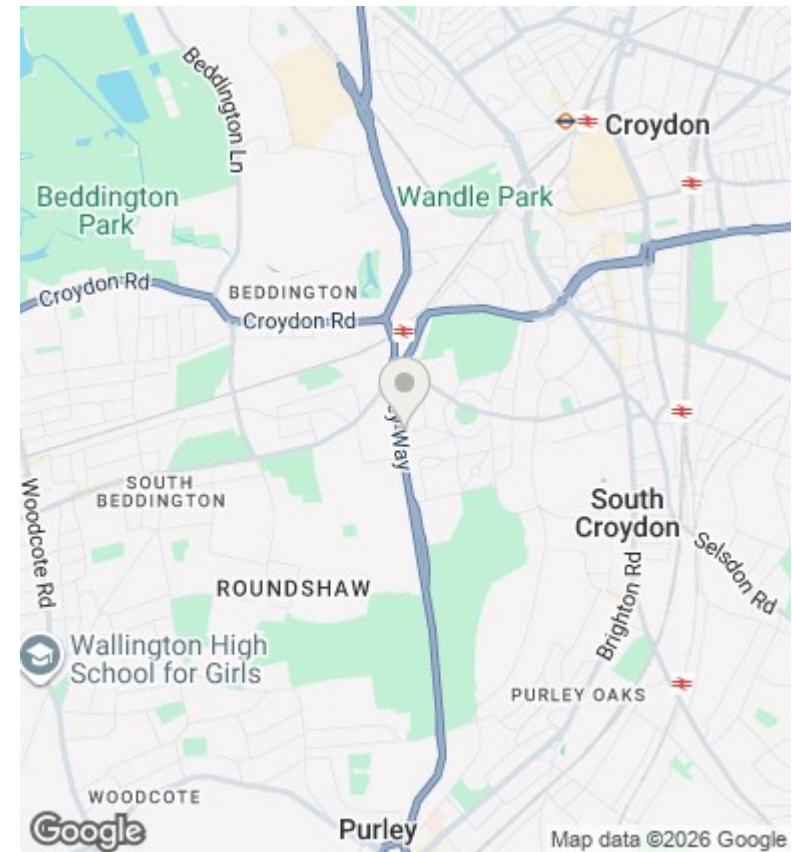
117 Coldharbour Road, Croydon, CR0 4DZ

Asking Price £550,000

- Four-bedroom semi-detached house
- Two reception rooms
- First floor bathroom plus separate WC
- Driveway for up to four cars
- Arranged over three floors
- Two Kitchens
- Large private rear garden
- Bright and airy rooms throughout
- Ground floor bathroom
- Private garage



Whilst every attempt has been made to ensure the accuracy of the floorplan contained here, measurements of doors, windows, rooms and any other items are approximate and no responsibility is taken for any error, omission or mis-statement. This plan is for illustrative purposes only and should be used as such by any prospective purchaser. The services, systems and appliances shown have not been tested and no guarantee as to their operability or efficiency can be given.
Made with Metropix ©2026



Directions

Viewings

Viewings by arrangement only. Call 0208 681 8133 to make an appointment.

Council Tax Band

C

EPC Rating:

D

Energy Efficiency Rating		Current	Potential
<i>Very energy efficient - lower running costs</i>			
(92 plus) A			
(81-91) B			
(69-80) C			
(55-68) D	61	63	
(39-54) E			
(21-38) F			
(1-20) G			
<i>Not energy efficient - higher running costs</i>			
England & Wales	EU Directive 2002/91/EC		