



## Little Smith Street, SW1P

£775,000

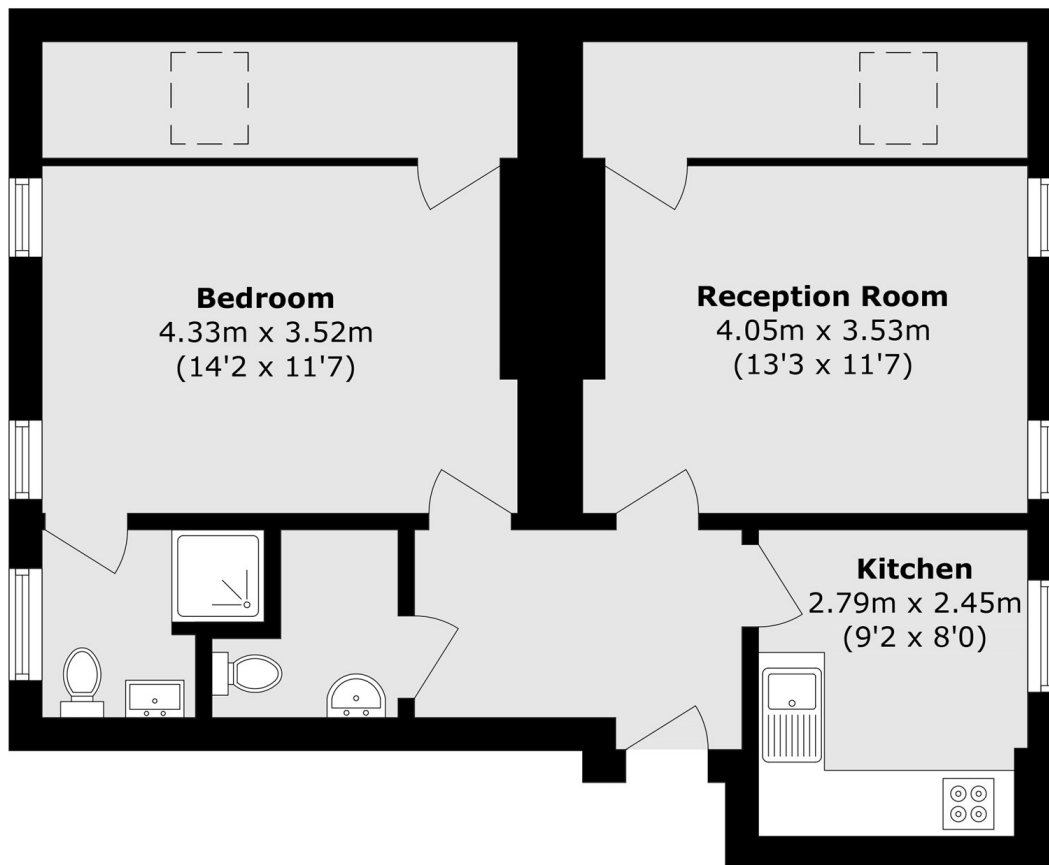
With a discreet entrance on Little Smith Street, this spacious one bedroom flat has high ceilings and good natural light, close to the Houses of Parliament. This property would make a wonderful home or investment with plenty of storage and a separate kitchen and living room.

Situated in-between St Johns, Smith Square and Westminster Abbey, this traditional red brick mansion block is in the heart of historical and political Westminster.

### Features

- One Bedroom
- One Bathroom & Separate WC
- Ample Storage
- Lift
- Separate Kitchen
- Share of Freehold

# Little Smith Street, London, SW1P



Total area (approx.): 61.7 sq. m (664.1 sq. ft)