



## 702 Skyline Plaza Alencon Link, Basingstoke – RG21 7AY

£150,000 Leasehold

CHAIN FREE • MANHATTEN DESIGN • 8TH FLOOR • ONE BEDROOM • COUNCIL TAX – A • EPC – C • GROUND RENT – £175 p/a • SERVICE CHARGE – £2111 p/a • 104 YEAR LEASE REMAINS

01256 321777

[www.thepropertyexplorer.co.uk](http://www.thepropertyexplorer.co.uk)

the property  
**explorer**

EXPLORER are delighted to present this impressive eighth floor Manhattan style studio apartment, ideally positioned within the ever popular Skyline Plaza development in the heart of Basingstoke town centre. Beautifully designed to maximise both space and natural light, the property features a cleverly partitioned double bedroom area which seamlessly complements the spacious open plan living and dining space, alongside a well appointed modern kitchen and contemporary bathroom suite.

Council Tax band: A

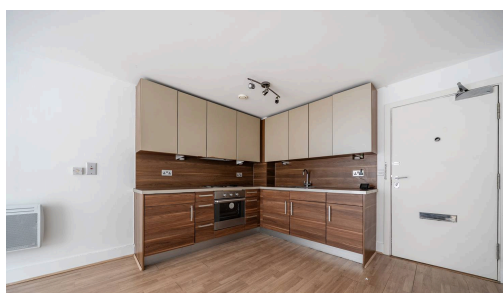
Tenure: Leasehold

EPC Energy Efficiency Rating: C

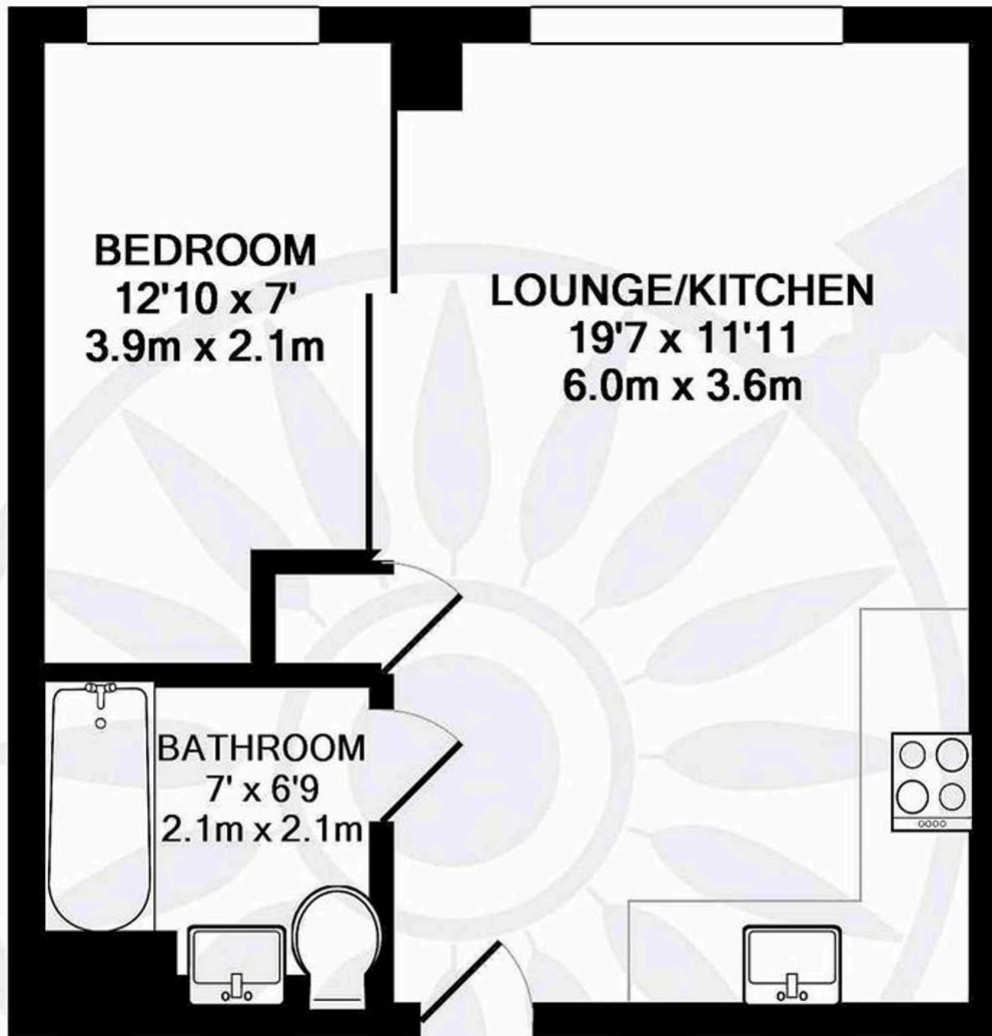
EPC Environmental Impact Rating: C



- › CHAIN FREE
- › MANHATTEN DESIGN
- › 8TH FLOOR
- › ONE BEDROOM
- › COUNCIL TAX - A
- › EPC - C
- › GROUND RENT - £175 p/a
- › SERVICE CHARGE - £2111 p/a
- › 104 YEAR LEASE REMAINS







TOTAL APPROX. FLOOR AREA 370 SQ.FT. (34.4 SQ.M.)

Whilst every attempt has been made to ensure the accuracy of the floor plan contained here, measurements of doors, windows, rooms and any other items are approximate and no responsibility is taken for any error, omission, or mis-statement. This plan is for illustrative purposes only and should be used as such by any prospective purchaser. The services, systems and appliances shown have not been tested and no guarantee as to their operability or efficiency can be given

Made with Metropix ©2017

You can include any text here. The text can be modified upon generating your brochure.