



move
Property Sales & Lettings

Cleeve View Road, Cheltenham
£500,000



Cleeve View Road

Cheltenham

Stylish bay-fronted semi, fully renovated, 3 beds, open-plan kitchen, bi-fold doors to garden, parking, garage, no chain. Close to parks, schools, and Cheltenham town centre. Scope to extend.

Council Tax band: C

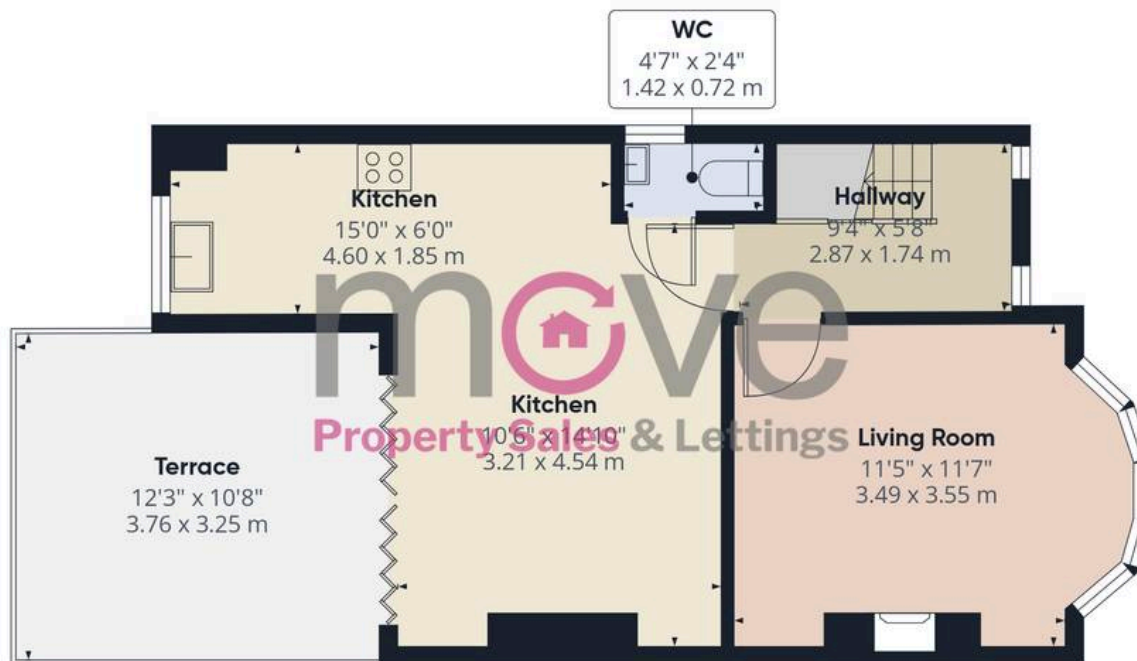
Tenure: Freehold

EPC Energy Efficiency Rating: E

EPC Environmental Impact Rating:

- Beautifully Renovated Bay-Fronted Semi-Detached Home
- NO ONWARD CHAIN
- Stylish Reception Hall and Elegant Living Room with Feature Wood Burner
- Open-Plan Kitchen/Dining Room with Bi-Fold Doors to the Garden
- Three Bedrooms all with Built in Storage
- Contemporary Family Bathroom with Standalone Bath and Walk-In Shower
- Large Landscaped Rear Garden with Scope for a Home Office or Outdoor Gym/Studio
- Significant Potential to Extend (Subject to Planning)
- Off Road Parking and Garage
- Prime Location Close to Cheltenham Town Centre, Parks and Excellent Schools





Floor 0



Floor 1



Approximate total area⁽¹⁾

812 ft²

75.5 m²

Balconies and terraces

130 ft²

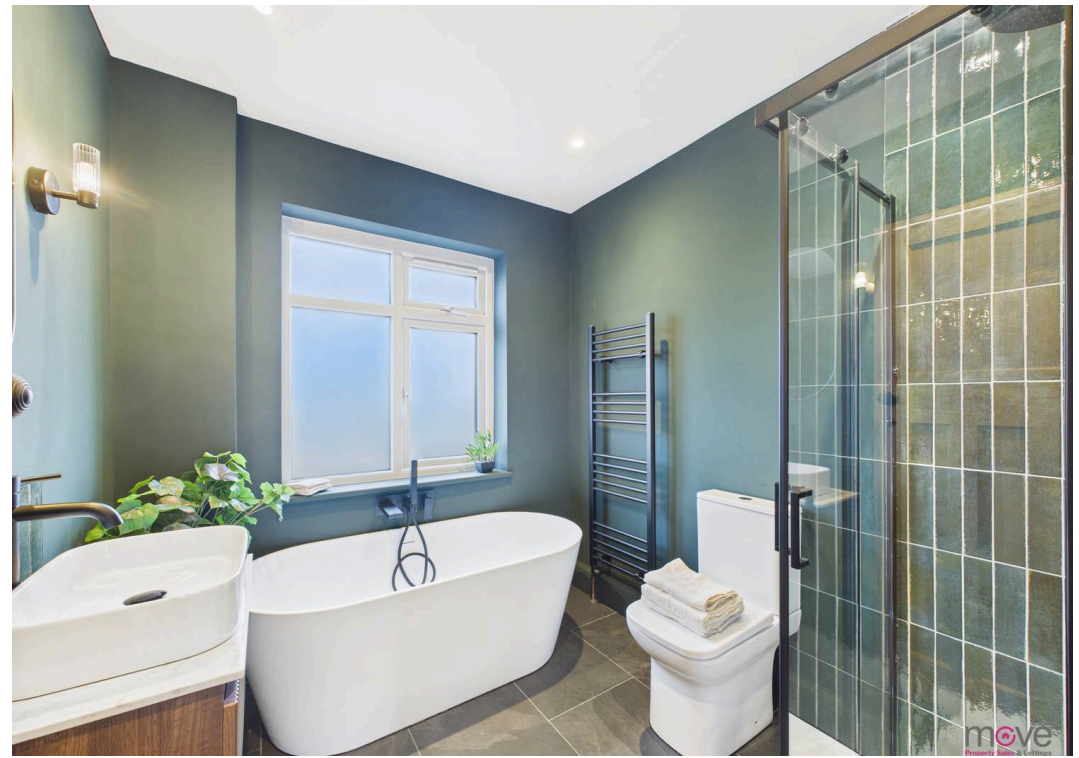
12.1 m²

(1) Excluding balconies and terraces

Calculations reference the RICS IPMS 3C standard. Measurements are approximate and not to scale. This floor plan is intended for illustration only.

GIRAFFE360







Move Estate Agents Cheltenham

1 The Clarence Clarence Parade, Cheltenham - GL50 3NY

01242 257333

cheltenham@move.uk.net

move.uk.net/

move
Property Sales & Lettings