



Rosebery Gardens, W13

£920,000

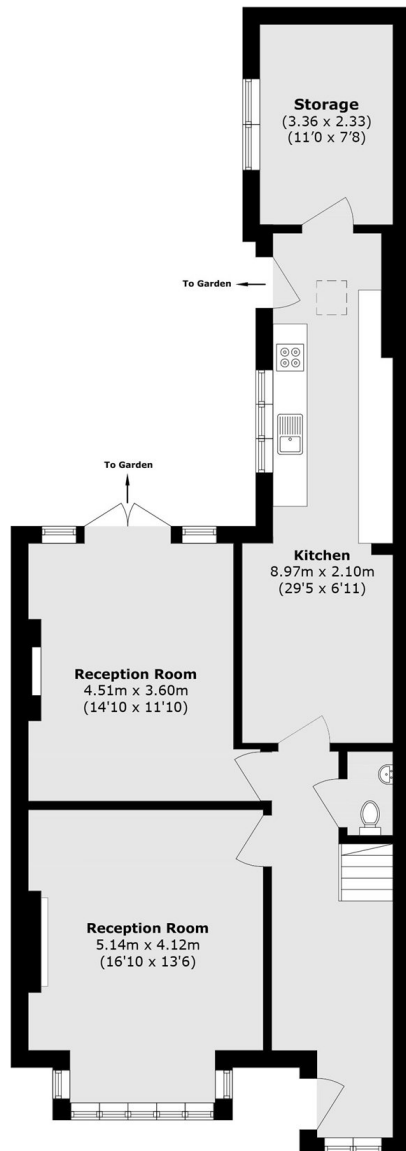
A mid terrace three bedroom family home on a popular residential street. The property has no onward chain and has scope for loft and ground floor extension (STPP) like many neighbouring properties. On the ground floor there are two large reception rooms, kitchen and brick built storage/garage. To the first floor there are two large double bedrooms plus a third single bedroom. There is high ceilings throughout and a good size patio garden.

Located just half a mile from the West Ealing Elizabeth line station, fourteen minutes to Bond Street, thirteen to Heathrow Airport and approximately thirty to Canary Wharf. There is easy vehicular access to the M4 and A40 and there are numerous excellent local schools, state and private.

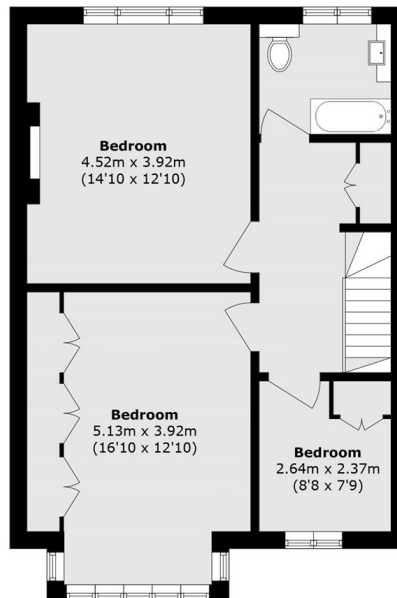
Features

- Three Bedrooms
- Two Reception Rooms
- Separate Kitchen
- No Onward Chain
- Potential To Extend (STPP)
- Close To Station

Rosebery Gardens, London, W13



Ground Floor



First Floor

Total area (approx.): 140.2 sq. m (1509.1 sq. ft)

Dexters

Ealing
2 New Ealing Broadway
London
W5 2NU
Sales
020 8810 0909

Energy Rating: C. We aim to make our particulars both accurate and reliable. However they are not guaranteed; nor do they form part of an offer or contract. If you require clarification on any points then please contact us, especially if you're traveling some distance to view. Please note that appliances and heating systems have not been tested and therefore no warranties can be given as to their good working order.

 **RICS** | Regulated
Estate Agent
and Letting Agent

[dexters.co.uk](https://www.dexters.co.uk)