



51 Fenland Road, King's Lynn PE30 3EU

£219,950

3 1 1



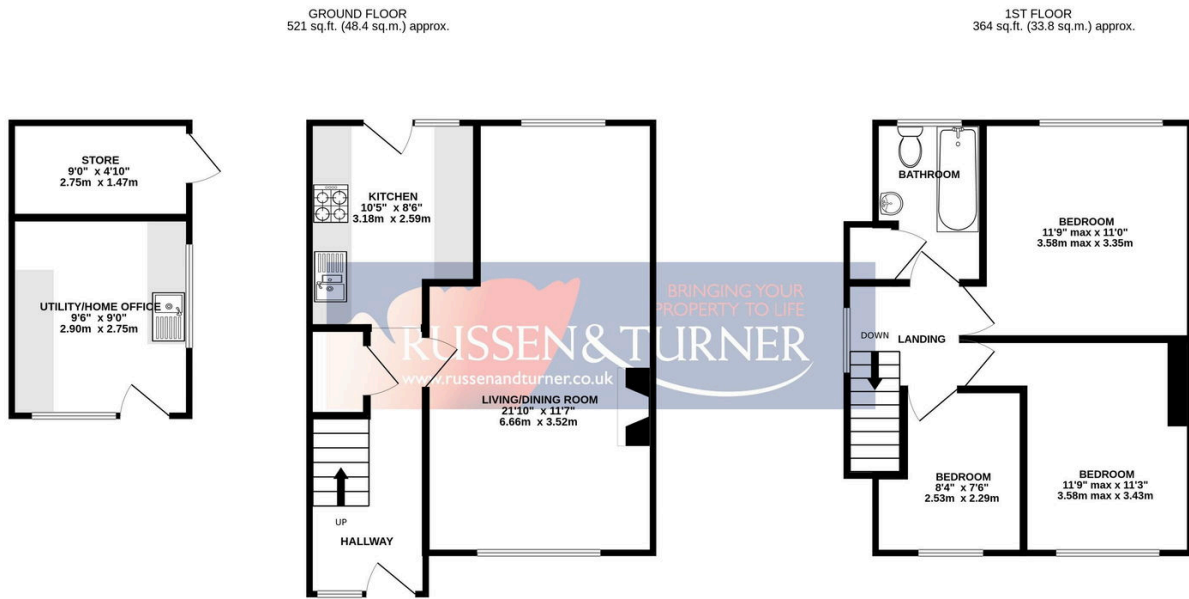
Set in one of the most sought-after areas of King's Lynn, this charming three-bedroom semi-detached home is the kind of place that just feels right from the moment you arrive. Whether you're taking your first exciting step onto the property ladder, searching for the perfect family home, or simply looking for a little more room to grow, this property offers an ideal blend of comfort, convenience and future potential.





Key Features

- Semi-Detached House
- No Onward Chain
- Private & Low Maintenance Rear Garden
- Ideal First or Family Home
- Bright and Airy 21ft Living/Dining Room
- Three Bedrooms
- Sought After Location - Close to Schools and Shops
- Off-road Parking
- Utility/Home Office
- Gas Central Heating



TOTAL FLOOR AREA : 885 sq.ft. (82.3 sq.m.) approx.

Whilst every attempt has been made to ensure the accuracy of the floorplan contained here, measurements of doors, windows, rooms and any other items are approximate and no responsibility is taken for any error, omission or mis-statement. This plan is for illustrative purposes only and should be used as such by any prospective purchaser. The services, systems and appliances shown have not been tested and no guarantee as to their operability or efficiency can be given.
Made with Metropix ©2025

