



St Marys Court, St Marys Street, Shrewsbury

£1,600 Per Month

# St Marys Court, St Marys Street,

---

VIRTUAL TOUR AVAILABLE -

Prestigious, spacious two bedroom first floor apartment located in an attractive converted period building in the heart of historic Shrewsbury. Includes gated allocated parking.

Available: 25/08/2026



Unfurnished

Available: 25th August 2026

Council Tax Band: E

EPC: D

---



2



2



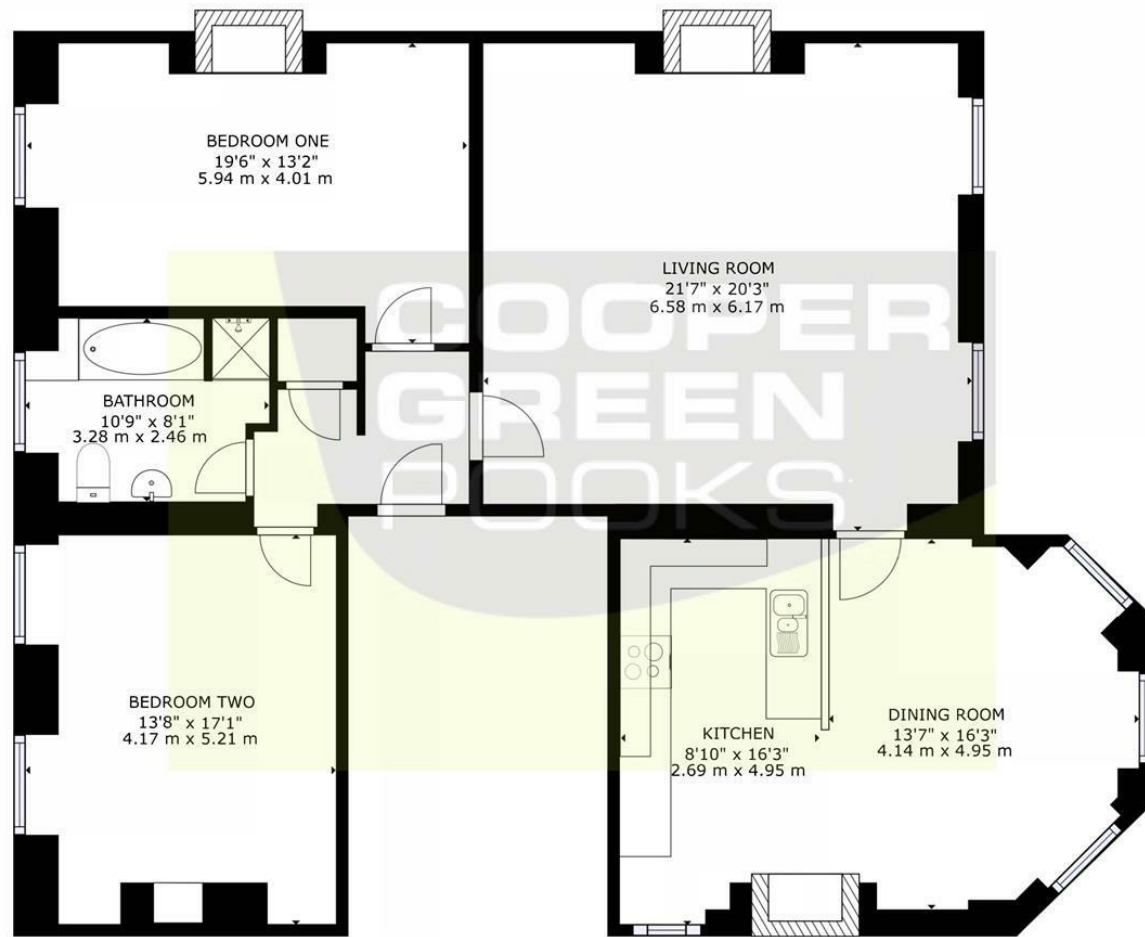
1



Entrance hall, hall, spacious living room with coal effect electric fire, breakfast kitchen incl white goods, dining room table and chairs, double Bedroom with wardrobe, bathroom with separate shower, double bedroom with wardrobe. Allocated parking space. EPC D



Find more properties to rent on our website



FIRST FLOOR APARTMENT

GROSS INTERNAL AREA  
F FIRST FLOOR: 1479 sq ft, 137.44 m<sup>2</sup>  
TOTAL: 1479 sq ft, 137.44 m<sup>2</sup>  
SIZES AND DIMENSIONS ARE APPROXIMATE, ACTUAL MAY VARY.



These particulars, whilst believed to be accurate are set out as a general outline only for guidance and do not constitute any part of an offer or contract. Intending purchasers should not rely on them as statements of representation of fact, but must satisfy themselves by inspection or otherwise as to their accuracy. No person in this firm's employment has the authority to make or give any representation or warranty in respect of the property.