

Boardwalk

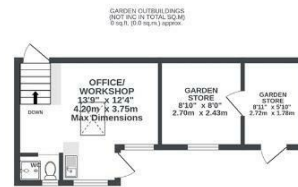
Walter Street

SOUTHVILLE, BRISTOL

Walter Street

SOUTHVILLE

APPROXIMATE FLOOR AREA
141.5 SQM / 1523 SQFT



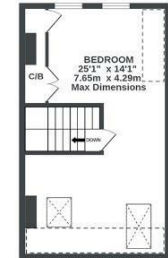
GROUND FLOOR
627 sq ft (58.2 sqm) approx.



1ST FLOOR
500 sq ft (46.3 sqm) approx.



2ND FLOOR
346 sq ft (31.9 sqm) approx.



Illustrations are for reference purposes only, measurements are approximate, not to scale.



Boardwalk

Walter Street

SOUTHVILLE, BRISTOL



£585,000



4 Bedrooms



BS3 1SX



3 Bathrooms

"This has been the perfect location to raise our children who attended the excellent local schools and enjoyed the community parks. We love to walk to Ashton court and the harbourside for lunch and there is nothing better than coming back and relaxing in the garden in peace and quiet. We also have lovely neighbours who welcomed us when we moved here."

