



Pinkmove

## Eastfield Way

Guide Price £270,000 to £280,000

- Spacious lounge and separate dining room
- Shower room
- Driveway providing off-road parking
- Garage
- Low-maintenance rear garden
- Two double bedrooms
- EPC Rating: D



 2  1  2

Pinkmove

01633 746088  
team@pinkmove.co.uk



Pinkmove

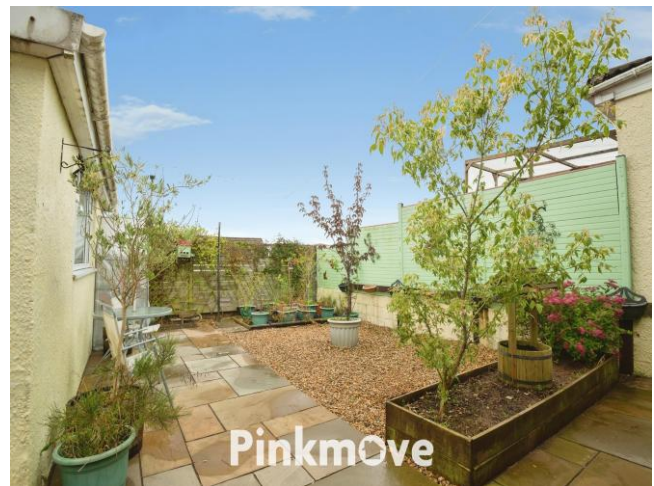
## About the property

This well-presented two-bedroom semi-detached property offers spacious and versatile accommodation, ideal for first-time buyers or those looking to downsize.

The ground floor comprises an entrance hallway leading to a generous lounge, along with a separate dining room providing excellent space for entertaining. The fitted kitchen offers practical workspace and storage.

To the first floor are two well-proportioned double bedrooms and a modern shower room, creating comfortable living accommodation. Externally, the property benefits from a large driveway to the front, providing off-road parking for multiple vehicles, along with a garage. The rear garden is low maintenance, featuring a patio seating area and decorative stone, perfect for outdoor relaxation.

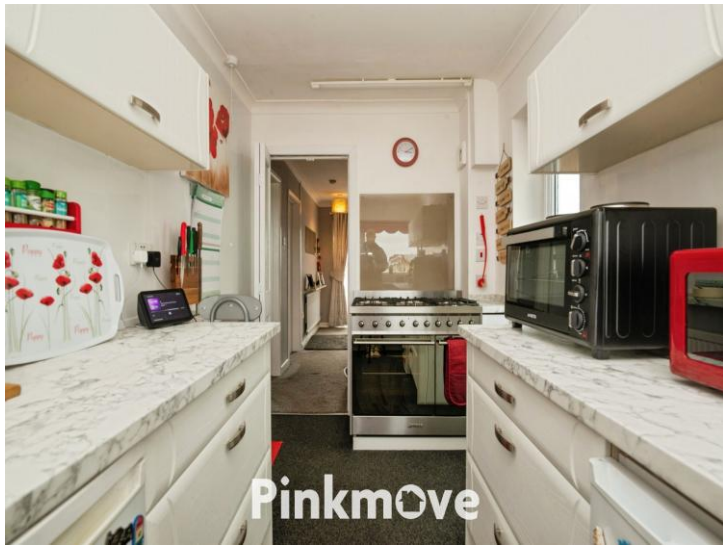
Situated in a popular residential area, the property is conveniently located close to local amenities, schools, and transport links.



Pinkmove



Pinkmove



## Accommodation

Dining Room

Lounge

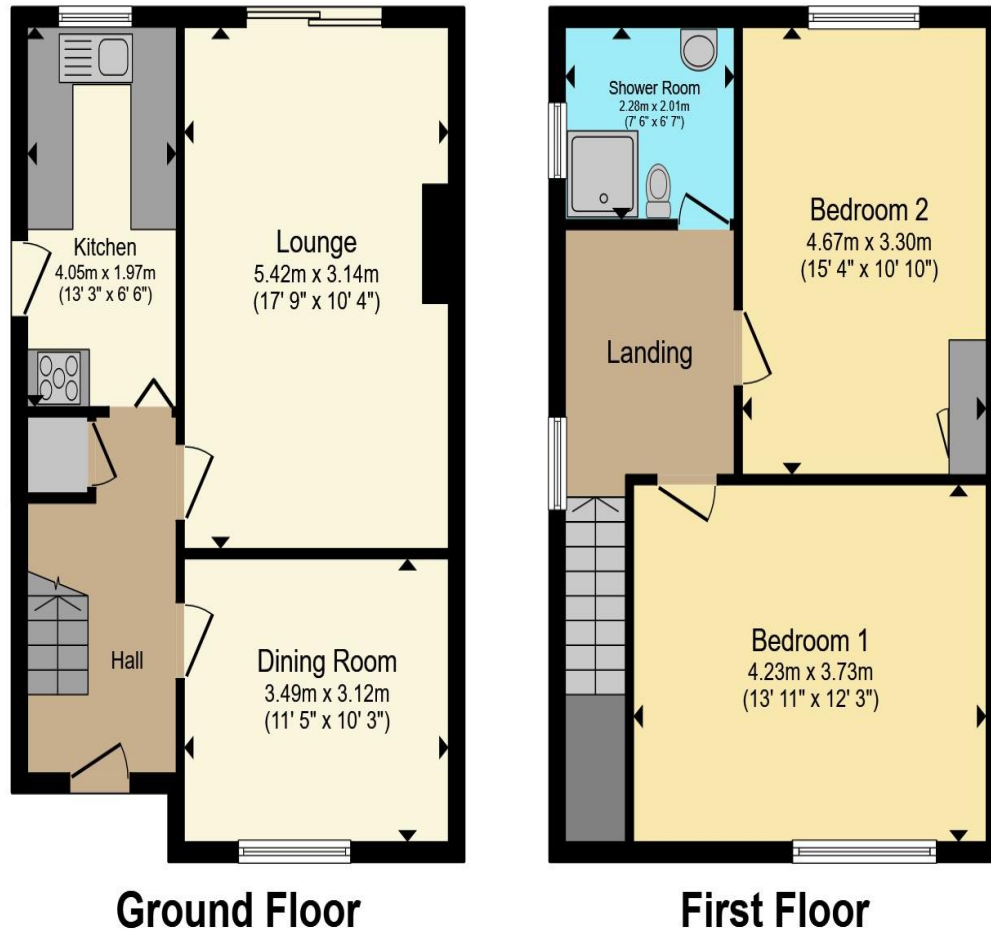
Kitchen

Bedroom 1

Bedroom 2

Shower Room

## Floorplan



Total floor area 93.0 sq.m. (1,001 sq.ft.) approx

This floor plan is for illustrative purposes only. It is not drawn to scale. Any measurements, floor areas (including any total floor area), openings and orientation are approximate. No details are guaranteed, they cannot be relied upon for any purpose and they do not form part of any agreement. No liability is taken for any error, omission or misstatement. A party must rely upon its own inspection(s). Powered by [www.focalagent.com](http://www.focalagent.com)



## Important Information

Note while we endeavour to make our sales details accurate and reliable, if there is any point which is of particular interest to you, please contact the office and we will be pleased to confirm the position for you. We have not personally tested any apparatus, equipment, fixtures, fittings or services and cannot verify they are in working order or fit for their purposes. Nothing in these particulars is intended to indicate that carpets or curtains, furnishings or fittings, electrical goods (whether wired or not). Gas fires or light fittings or any other fixtures not expressly included form part of the property offered for sale. This computer generated Floorplan, if applicable, is intended as a general guide to the layout and design of the property. It is not to scale and should not be relied upon for dimensions. Tenure: We cannot confirm the tenure of the property as we have not had access to the legal documents. The buyer is advised to obtain verification from their solicitor or surveyor.

Peter Alan Limited is registered in England and Wales under company number 2073153. Registered Office is Cumbria House, 16-20 Hockliffe Street, Leighton Buzzard, Bedfordshire, LU7 1GN. VAT Registration Number is 500 2481 05. For activities relating to regulated mortgages and non-investment insurance contracts, Peter Alan Limited is an appointed representative of Connells Limited which is authorised and regulated by the Financial Conduct Authority. Connells Limited's Financial Services Register number is 302221. Most buy-to-let

