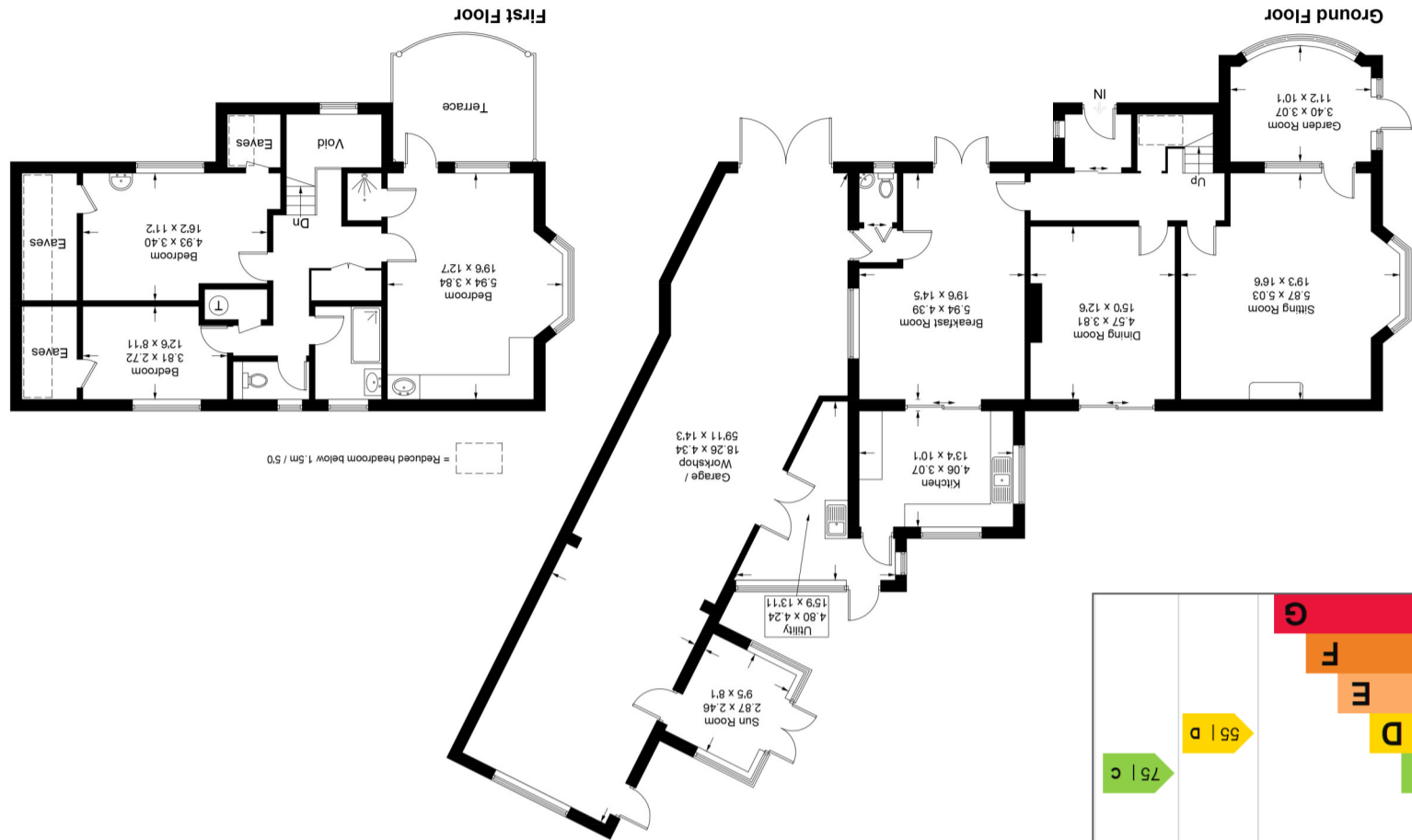


Whilst every attempt has been made to ensure the accuracy of the floor plan contained here, measurements of doors, windows, rooms and any other items are approximate and no responsibility is taken for any error, omission, or misstatement. This plan is for illustrative purposes only and should be used as such by any prospective purchaser. Created by Emzo Marketing 2021. (ID771870)



Score	Energy rating	Current	Potential
1-20	G		
21-38	F		
39-54	E		
55-68	D	55 D	
69-80	C		75 C
81-91	B		
92+	A		

Produced for Stride & Son Estate Agent.



Approximate Gross Internal Area = 295.1 sq m / 3176 sq ft (including Garage / Workshop / Eaves / Excluding Void)

Deesfield, Harbour Road, PO18 8JE

STRIDE & SON

Southdown House, St. John's Street, Chichester, PO19 1XQ

Tel: 01243 782626 Fax: 01243 786713

www.strideandson.co.uk

properties@strideandson.co.uk



Harbour Road, Bosham



Deesfield, Harbour Road, Bosham, PO18 8JE

