



## Napier Mews, London W3

£1,150,000 Leasehold







## Description

Discover this remarkable 3-bedroom, 3-bathroom townhouse that redefines London living with its extraordinary collection of private outdoor spaces. Nestled within a prestigious gated development on Bromyard Avenue, this exceptional property combines generous proportions with premium amenities, offering a lifestyle rarely found in the capital.

The thoughtfully designed layout spans approximately 1,807 square feet across multiple levels, featuring three well-appointed bedrooms including a master suite with en-suite bathroom. The separate kitchen provides excellent culinary space, while the additional reception areas create perfect entertaining environments. What truly sets this property apart is underground private parking garage that can be used as a storage, games room or cinema room, and also its remarkable outdoor offering - from the private garden ideal for relaxation to the stunning roof terrace perfect for al fresco dining and the two additional balconies that capture natural light throughout the day.

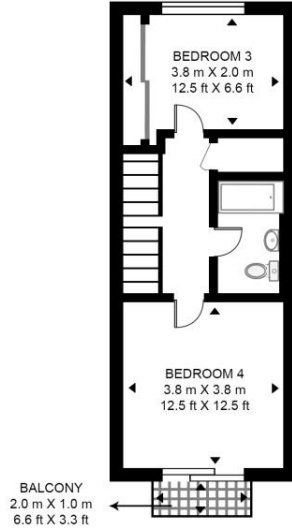
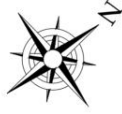
Leasehold 977 years (exp. 31/12/3002)  
Ground Rent: Approx. £1,332.96 pa  
Service Charge: Approx. £2,190 pa  
Council Tax Band: E

- 3 Bedrooms
- 2 Bathrooms (1 en-suite)
- Private Roof Terrace
- 2 Private Balconies
- Secure Underground Garage
- Private Garden
- Separate Kitchen
- Approx. 1807 sq ft / 167.9 sq m

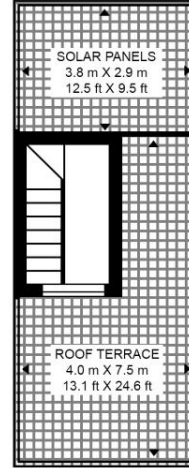
# Floorplan

1,809 sq ft | 168 sq m

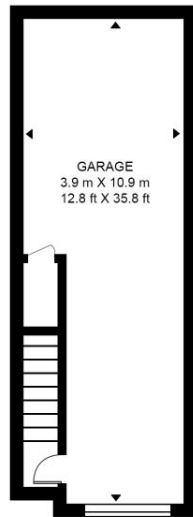
## BROMYARD AVENUE, NAPIER MEWS APPROXIMATE GROSS INTERNAL FLOOR AREA 1809 SQ.FT (168.1 SQ.M)



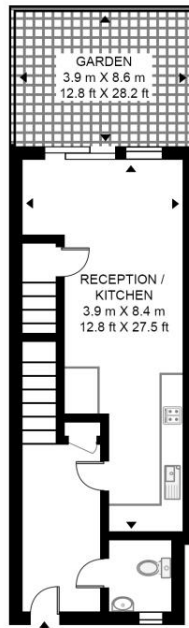
FIRST FLOOR



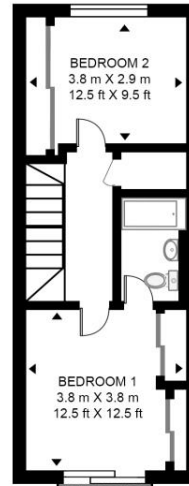
THIRD FLOOR



BASEMENT FLOOR



GROUND FLOOR



SECOND FLOOR



**HDVA**

This floor plan has been defined by the RICS Code of Measurement. This floor plan and all others are for approximate representative purposes only and upon usage is agreed to as such by the client.

WWW: [hdvirtualart.com](http://hdvirtualart.com) | TEL: 0203.974.1567 | EMAIL: [info@hdvirtualart.com](mailto:info@hdvirtualart.com)

Kew Bridge  
12 Capital Interchange Way,  
London TW8 0SP  
020 3147 1880  
[lettingskewbridge@jll.com](mailto:lettingskewbridge@jll.com)

*Urban living, your way.*

[jll.co.uk/residential](http://jll.co.uk/residential)

© 2019 Jones Lang LaSalle IP, Inc. All rights reserved. All information contained herein is from sources deemed reliable; however, no representation or warranty is made to the accuracy thereof.

