



To Let

Roundwell Street, South Petherton, TA13 5AA
Monthly Rental Of £1,125



ORCHARDS
ESTATES

Orchards Estates are pleased to welcome to the market this two-bedroom terraced house with an attic room, within walking distance to local amenities in South Petherton.

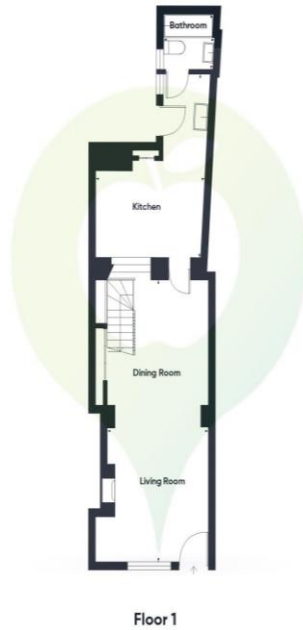
The property, upon entry welcomes you into the living room with flagstone flooring, log burner and access to the first floor.

Flowing through to the open kitchen area and downstairs bathroom with bath and shower over, basin and W/C.

On the first floor, you are greeted to two bedrooms, both being a good size. In the second bedroom, you have a door leading to the attic room which is equipped with a cloakroom with W/C and basin.

The rear garden is split in half, with the neighbour having Rights across the garden for access to their garden, located to the rear of the garden for 13.

The property has gas fired central heating and is available now.



Approximate total area⁽¹⁾
 83.1 m²
 895 ft²

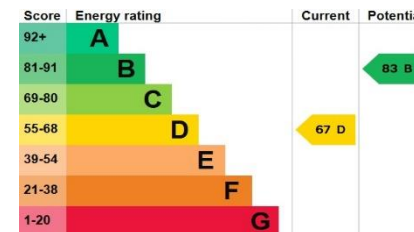
Reduced headroom
 3.7 m²
 40 ft²

(1) Excluding balconies and terraces

Reduced headroom
 Below 1.5 m/5 ft

Calculations reference the RICS IPMS 3C standard. Measurements are approximate and not to scale. This floor plan is intended for illustration only.

GIRAFFE360



01460 477977 or 01935 277977

www.orchardsestates.com

Orchards Estates, 11 North Street Workshops, Stoke sub Hamdon, TA14 6QR



ORCHARDS
ESTATES

Consumer Protection from Unfair Regulations 2008: The Agents has not tested any apparatus, equipment, fixtures and fittings, or services, so cannot verify that they are in working order or fit for the purpose. The buyer is advised to obtain verification from his or her Professional Buyer. References to the Tenure of the property are based on information supplied by the Vendor. The agents have not had sight of the title documents. The buyer is advised to obtain verification from their Solicitor. You are advised to check the availability of any property before travelling any distance to view.