



**2 Bed  
Flat  
located in**

**Asking price £395,000**



**SECOMBE**  
estates

**15 Fawcett Close**  
**London**  
**SW16 2QJ**

**Living Room**

**Bedroom One**

**Bedroom Two**

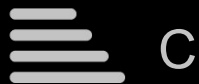
**Bathroom**

**Kitchen**

**Off Street Parking**

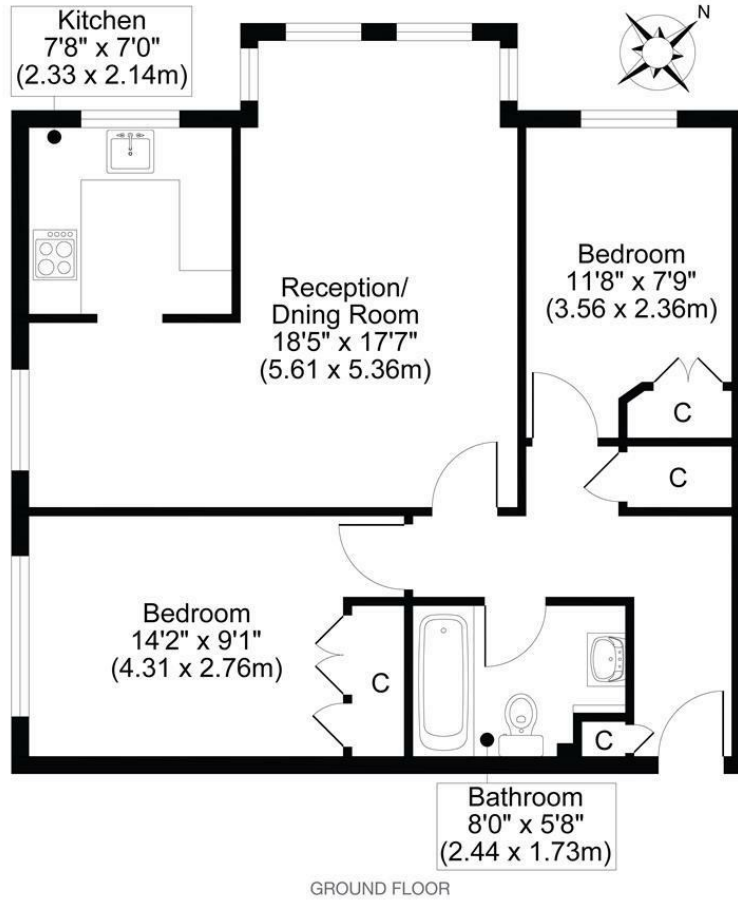
**Communal Grounds**

**Dining Space**





FAWCETT CLOSE, SW16  
 TOTAL APPROX FLOOR PLAN AREA 657 SQ.FT (61 SQ.M)



All measurements, walls, doors, windows, fittings and their appliances, their size and locations are shown conventionally and are approximate only and cannot be regarded as being a representation either by the seller or his agent.



## DIRECTIONS

## CONTACT

25 St Julians Farm Road  
 London  
 SE27 0RJ

E: [hello@secombeestates.co.uk](mailto:hello@secombeestates.co.uk)  
 T: 07493 164 455  
[www.secombeestates.co.uk](http://www.secombeestates.co.uk)

Energy Efficiency Rating		Current	Potential
Very energy efficient - lower running costs			
(92 plus) <b>A</b>			89
(81-91) <b>B</b>			
(69-80) <b>C</b>		77	
(55-68) <b>D</b>			
(39-54) <b>E</b>			
(21-38) <b>F</b>			
(1-20) <b>G</b>			
Not energy efficient - higher running costs			
England & Wales		EU Directive 2002/91/EC	

SECOMBE  
 estates