

21 Tudor Coppice

Solihull, B91 3DE





TWO BEDROOM FIRST FLOOR APARTMENT

- TWO BEDROOMS
- ONE ALLOCATED PARKING SPACE
- LOUNGE/DINING ROOM
- KITCHEN
- EN-SUITE TO MASTER BEDROOM
- WALKING DISTANCE TO TOWN CENTRE
- PERFECT FOR FIRST TIME BUYERS
- FIRST FLOOR

A two bedroom first floor apartment in a sought after area, close to Solihull Town Centre. This property is a modern build and is perfect for first time buyers, investors and people down sizing. The property has one allocated and visitor car parking spaces. It briefly comprises of a lounge, kitchen, two bedrooms (Master with En-Suite) and bathroom.



HALLWAY

With storage cupboard housing boiler and an additional double storage cupboard.

LOUNGE/DINER

With bay window to front, an additional window to front. Fireplace and electric fire.

KITCHEN

With spotlights, tiled floor and part tiled walls. Space for a washing machine, electric hob and an electric oven with extractor hood.

BEDROOM ONE

Window to rear. Triple mirrored wardrobes and door leading to en-suite.

EN-SUITE

Corner shower cubicle, heated towel rail, sink, low level WC and a tiled floor.

BEDROOM TWO

A spacious room with bay window to rear.

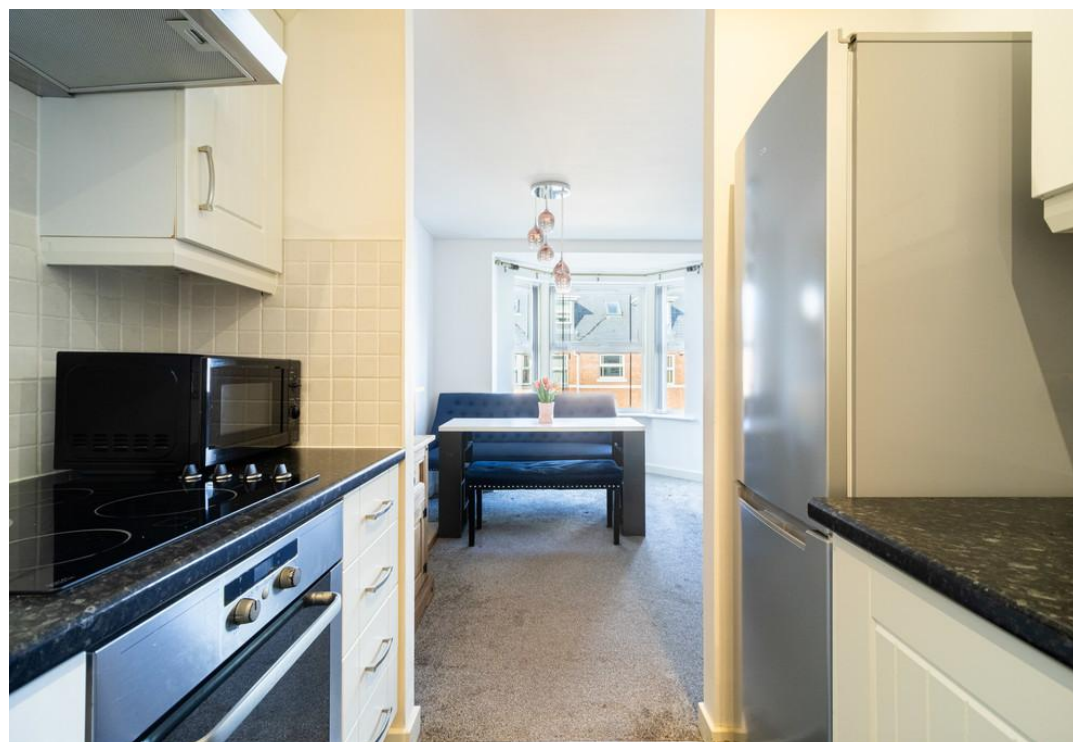
BATHROOM

Bath, low level WC, heated towel rail, sink and tiled floor.

Length of Lease: 135 years

Service Charge: £1781.16 pa.

Ground Rent: £370.47 pa.









Offers In Region Of £240,000

TENURE:

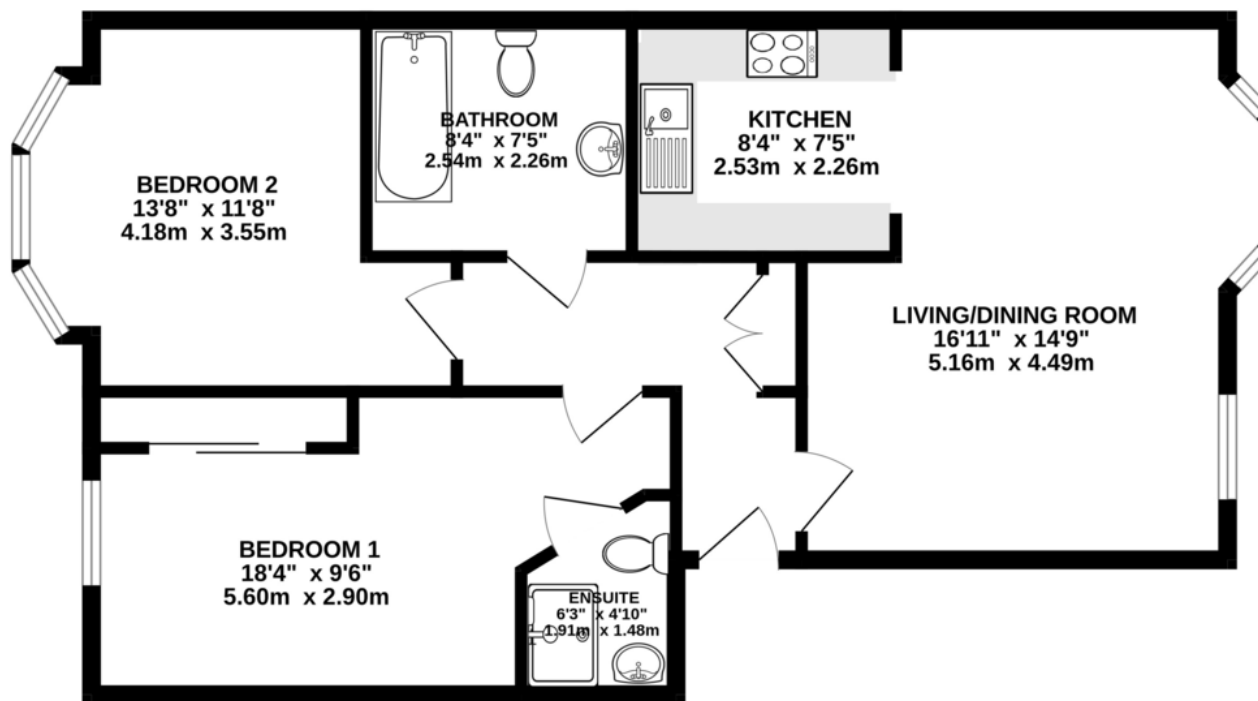
We have been advised by the seller that the property is Leasehold. Interested purchasers should seek clarification of this from their solicitor (If Leasehold, Leasehold Covenants may apply)

Ruxton Independent Estate Agents & Valuers LLP

6 The Square, Solihull
B91 3RB
0121 704 0100



FIRST FLOOR
705 sq.ft. (65.5 sq.m.) approx.



TOTAL FLOOR AREA : 705 sq.ft. (65.5 sq.m.) approx.

Whilst every attempt has been made to ensure the accuracy of the floorplan contained here, measurements of doors, windows, rooms and any other items are approximate and no responsibility is taken for any error, omission or mis-statement. This plan is for illustrative purposes only and should be used as such by any prospective purchaser. The services, systems and appliances shown have not been tested and no guarantee as to their operability or efficiency can be given.
Made with Metropix ©2026

Floorplan – For identification purposes only



Important Notice: These particulars are believed to be accurate but they are not guaranteed to be so. They are intended only as a general guide and cannot be construed as any form of contract, warranty or offer. The details are issued on the strict understanding that any negotiations in respect of the property named herein are conducted through the agent.

Score	Energy rating	Current	Potential
92+	A		
81-91	B	81 B	85 B
69-80	C		
55-68	D		
39-54	E		
21-38	F		
1-20	G		