



Walpole Road, TW11

£374,950

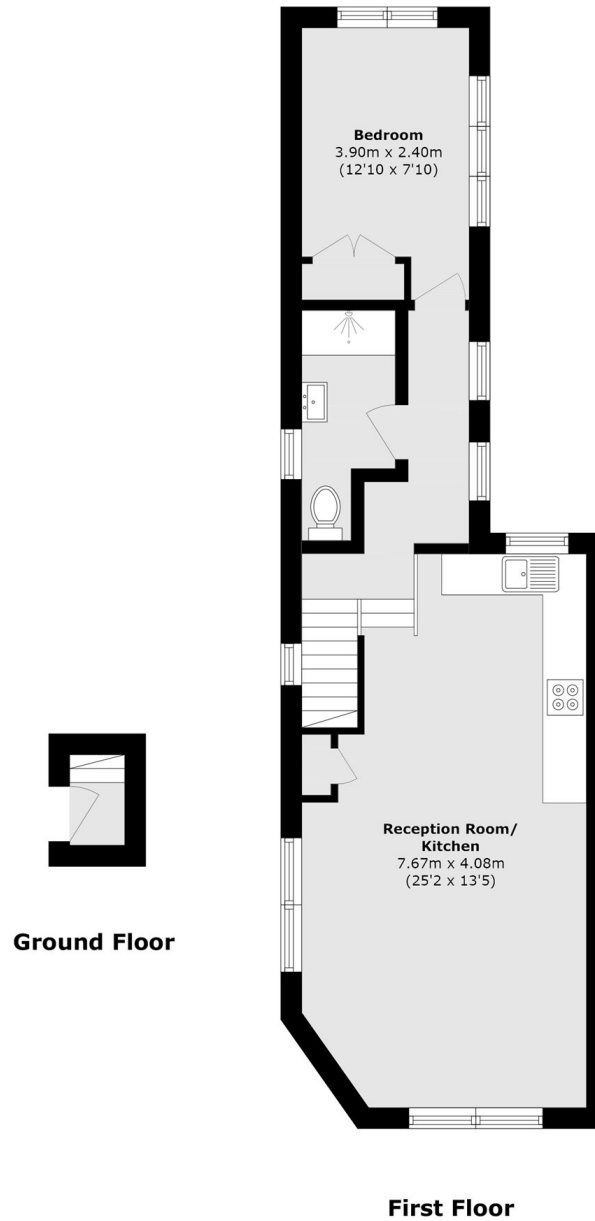
Stylish first-floor one-bedroom apartment with a private entrance and share of freehold, ideally located just moments from Teddington town centre, the station and Bushy Park. Offering 543 sq ft of bright, immaculately presented space with high ceilings, double glazing and quality finishes throughout. Features include a spacious open-plan living area with wood flooring and modern integrated kitchen, a luxury bathroom, and a double bedroom with built-in storage.

Walpole Road is located just off Church Street which is a very short walk to Teddington High Street. Also close to the River Thames, towpath walks and Hampton Court.

Features

- First Floor
- Excellent Condition
- Open Plan
- Share Of Freehold
- Popular Location
- No Chain

Walpole Road, Teddington, TW11



Total area (approx.): 50.8 sq. m (546.8 sq. ft)