



HARTFIELD CRESCENT, SW19

£999,950

Victorian terrace
Three bedrooms
Open-plan living
Sought after road
Potential to extend
Energy rating: c

@marshandparsons
marshandparsons.co.uk

MARSH &
PARSONS

ABOUT THE PROPERTY

Set in Hartfield Crescent's iconic sweep of Victorian artisans' cottages, this delightful house is a rare gem. It features extended living space, three bedrooms, and a mature, secluded west facing garden.

The friendly neighbourhood in the heart of Wimbledon is much desired for its quiet, tree-lined ambience, and proximity to Dundonald Park and the local schools. Equally, it is just a short walk to the buzz and bustle of Wimbledon Broadway, with its shopping, restaurants, cinemas and gyms, and enviable mainline and tube links.





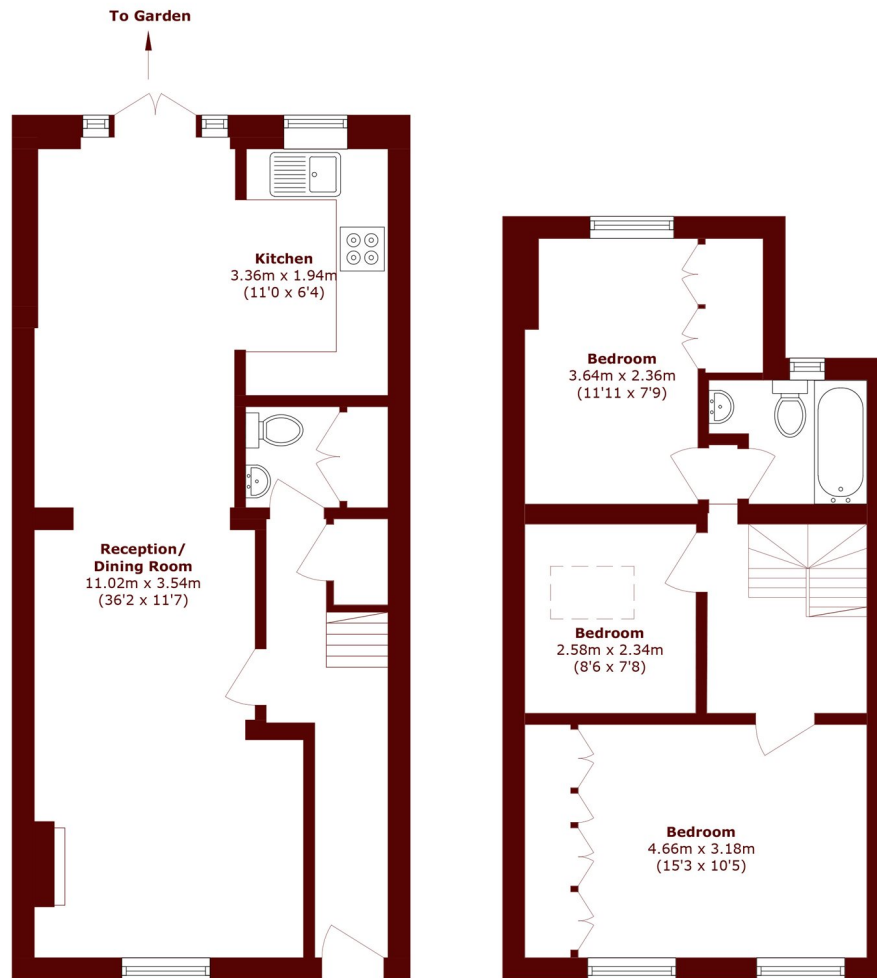


FURTHER DETAILS

Approached via a pretty front garden, an inner hallway leads to the open-plan living area. Extended to 36 feet in length, this bright, expansive space features high ceilings and original features. There is ample room for a dining table by the patio doors which, like the galley-style kitchen, overlook a wonderfully sunny, terraced rear garden. The ground floor also offers a separate WC/utility room. Upstairs comprises three bedrooms and a good-size bathroom, off a light, airy landing illuminated by a generous skylight window. To the front is a spacious main bedroom with built-in wardrobes, while a second double, overlooking the garden, also features extensive storage. There is a neatly proportioned third bedroom, and loft space with the potential for conversion (STPP).



STEP INSIDE HARTFIELD CRESCENT



Ground Floor

First Floor

Total area (approx.): 96.4 sq. m (1037.6 sq. ft)

Wimbledon
020 8879 6660

Energy Rating: C We aim to make our particulars both accurate and reliable. However, they are not guaranteed; nor do they form part of an offer or contract. If you require clarification on any points then please contact us, especially if you're traveling some distance to view. Please note that appliances and heating systems have not been tested and therefore no warranties can be given as to their good working order

**MARSH &
PARSONS**