



PERIOD
HOMES

London Road, Maldon. CM9 6HD
£475,000

London Road

Maldon

This delightful Grade II listed two-bedroom cottage is brimming with charm and character, perfectly combining period features with modern living.

Council Tax band: C

EPC Energy Efficiency Rating: F

EPC Environmental Impact Rating: G

- Delightful Grade II listed cottage
- Impressive extended kitchen/breakfast room
- Generous rear garden as well as an adjacent driveway offering off street parking
- Full of character & period features
- Only moments from Maldon's vibrant High Street





London Road

Maldon

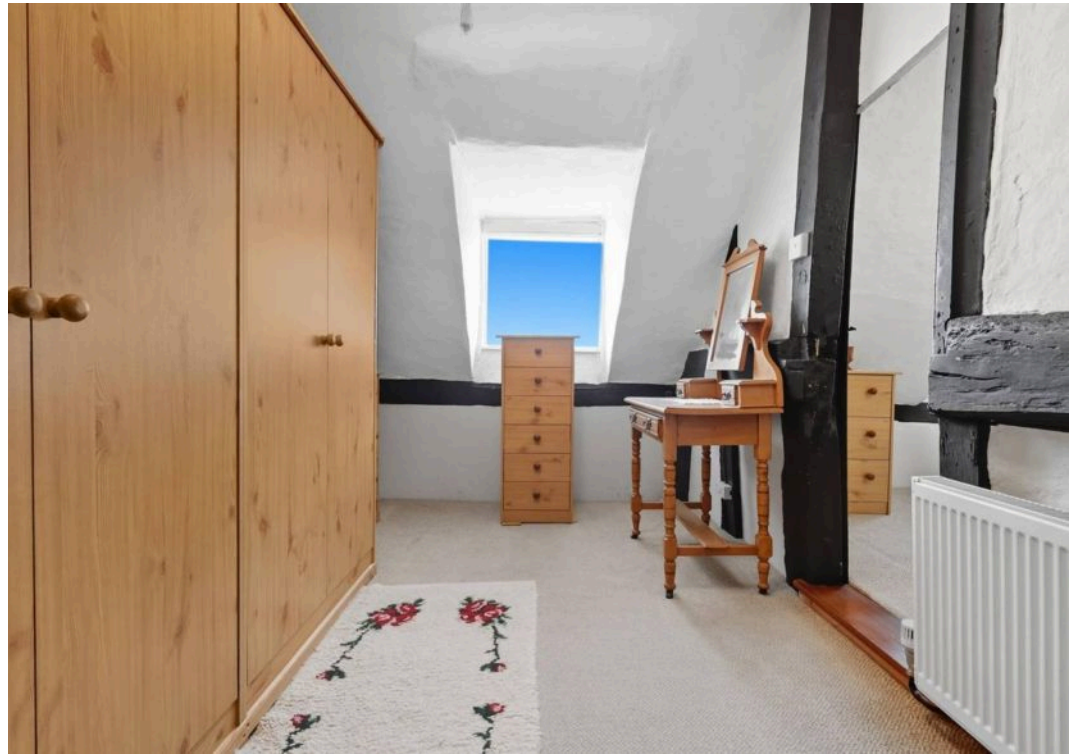
This delightful Grade II listed two-bedroom cottage is brimming with charm and character, perfectly combining period features with modern living. Inside, you'll find two inviting reception rooms, one of which could be used as a second bedroom. An impressive extended kitchen/breakfast room, and a bathroom on the ground floor, while upstairs offers a well-proportioned bedroom. With its historic appeal and cosy yet practical layout, this home is ideal for anyone seeking a property with personality in the heart of Maldon.

On the ground floor, the property benefits from the two welcoming reception rooms, perfect for relaxing or entertaining, plus the beautiful kitchen/breakfast room with space for family dining. A modern ground floor bathroom completes this level. The first floor offers a charming main bedroom, full of character and period features complete with dressing room and convenient W/C.

Externally, the property boasts a generous rear garden, providing ample outdoor space to enjoy, as well as an adjacent driveway offering off-road parking.

- Delightful Grade II listed cottage
- Impressive extended kitchen/breakfast room
- Generous rear garden as well as an adjacent driveway offering off street parking
- Full of character & period features
- Only moments from Maldon's vibrant High Street









LONDON ROAD

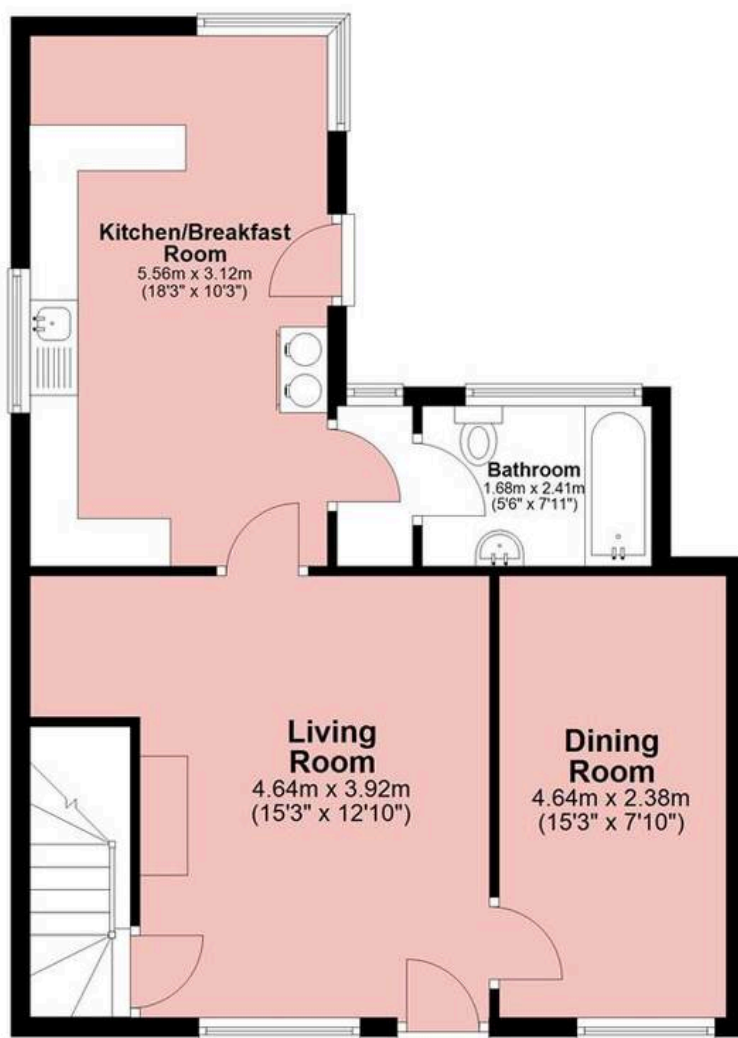
Approx. Gross Internal Area 87.7 Sq M (943.8 Sq Ft)



PERIOD
HOMES

Ground Floor

Approx. 59.0 sq. metres (635.4 sq. feet)



First Floor

Approx. 28.7 sq. metres (308.4 sq. feet)



Measurements are approximate and for illustration purposes only. While we do not doubt the accuracy and completeness, we advise you conduct a careful independent assessment of the property to determine monetary value.

About Us

From charming cottages to country estates, all our homes have a story to tell. 'Period Homes' is one of a kind, an agency dedicated to the sale of character and period properties across Essex.

If you would like to buy a period home but you have a modern home to sell first, we can assist via our sister company, Walkers, which just so happens to have been voted Britain's Best Estate Agency in the British Property Awards. That way, both elements of your move are in the very best of hands.

Get In Touch



Browse Properties





Contact Us
01245 206000



Our Website
periodhomes.co.uk



Our Address
The Spinney, 121 Main Rd, Danbury,
Chelmsford CM3 4DL



PERIOD
HOMES

Pst... Have you heard of
discreet marketing?

Many people lose out on their dream home to someone in a better position.

Often, it is because they have delayed putting their house on the market, preferring to find somewhere first and then sell.

That is why we have innovated a totally unique and high confidential moving home solution to put you in a competitive position.

Let us find you a buyer without any advertising or pressure and without the neighbours knowing.

Your secret is safe with us...

Get in touch for a
complimentary valuation.

Looking To Sell Or Let Your Home?

Book your free valuation to see how much your home is worth.