



Guide Price
£180,000

**Share of
Freehold**

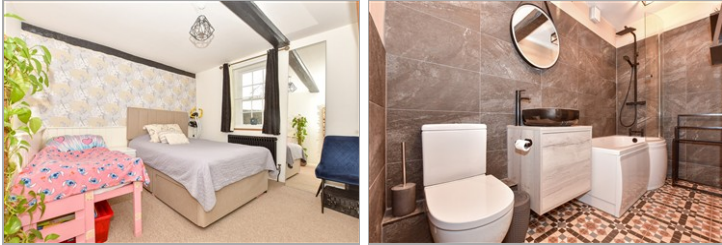
1x  1x  1x 

**Swan Place, High Street,
Yalding, Maidstone,
Kent, ME18**

OVER 60?

Secure this property
for up to **59% less!**

Wards
Helping you move forwards



Main features

- 1 bedroom ground floor apartment with inglenook fireplace
- Beautiful private garden situated by the river
- Cellar with storage space.
- Newly renovated kitchen and bathroom
- Situated in the sought after village of Yalding

Accommodation

GROUND FLOOR

Lounge: 14'1 x 10'1 (4.30m x 3.08m)

Kitchen: 8'8 x 8'6 (2.64m x 2.59m)

Dining Area: 16'3 x 6'1 (4.96m x 1.86m)

Bedroom 1: 12'2 x 11'9 (3.71m x 3.58m)

Bathroom

BASEMENT

Cellar 1

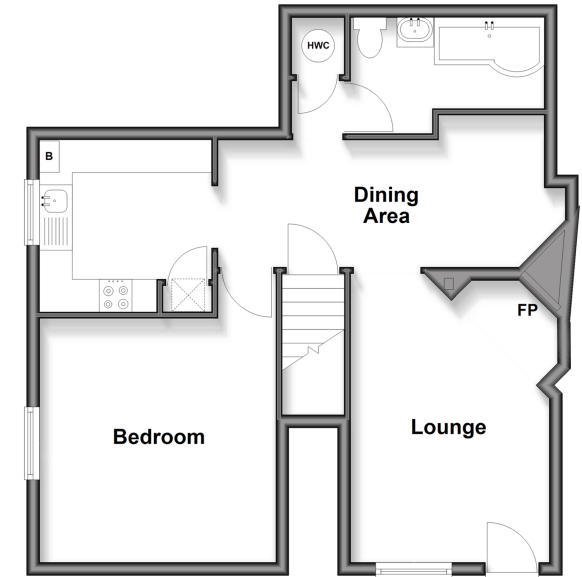
Cellar 2

OUTSIDE

Rear Garden

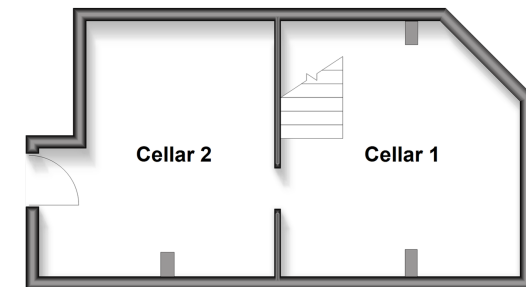
Ground Floor

Approx. 55.0 sq. metres (592.3 sq. feet)



Basement

Approx. 26.7 sq. metres (286.9 sq. feet)



Call Paddock Wood - 01892 836877 ■ wardsokent.co.uk

- Legal advice should be taken to verify fixtures/fittings, planning, alterations and/or lease details
- Appliances & services are untested, dimensions are approximate and floor plans are not to scale
- Through a Homewise Home For Life Plan people aged 60+ can secure this property for up to 59% less, by purchasing a Lifetime Lease



13627527/20260114/LF/HD