



RESIDE  
—  
MANCHESTER



A1115 Railings 5 Shale Lane  
Middlewood Locks, Salford, M5 4DB

**£1,500 PCM**





## A1115 Railings 5 Shale Lane

Middlewood Locks, Salford, M5 4DB

Middlewood Locks is an award-winning canalside neighbourhood, and we're delighted to introduce the latest phase, now available to rent with immediate move-ins.

This beautifully designed two-bedroom, one-bathroom apartment offers a high specification throughout, featuring a fully fitted kitchen with integrated appliances, a sleek contemporary bathroom, double-glazed windows, and access to a secure parcel system for added convenience.

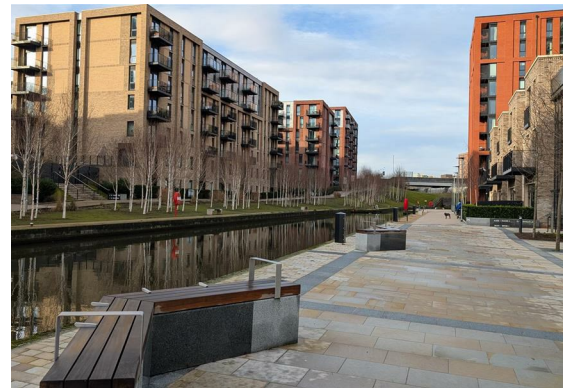
Set within a vibrant waterside community with attractive green spaces, this exciting new release is a fantastic addition to an already thriving neighbourhood.

6 Months Free Hyperoptic WiFi Included. Pet friendly.

Call our rental team on 0161 837 2840 today to register your interest and be among the first to secure a home in this exceptional new development.

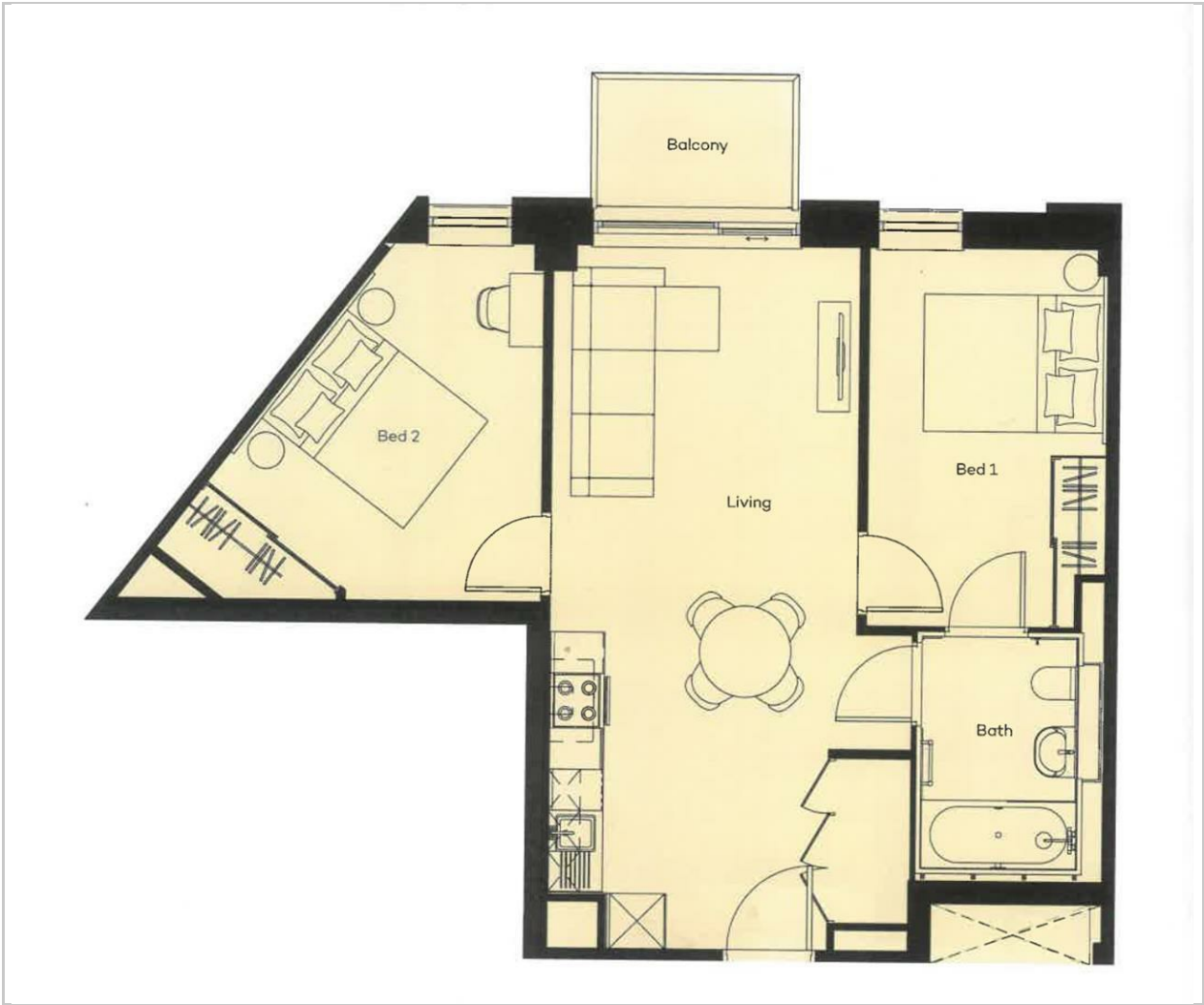
- Brand New Development
- Two Double Bedroom, One Bathroom
- Furnished Throughout
- Canalside Neighbourhood
- Available Immediately
- EPC Rating B
- Secure Parcel System
- 10 Minute Walk Into Manchester City Centre
- Spacious Balcony
- Pet Friendly







Floor Plan

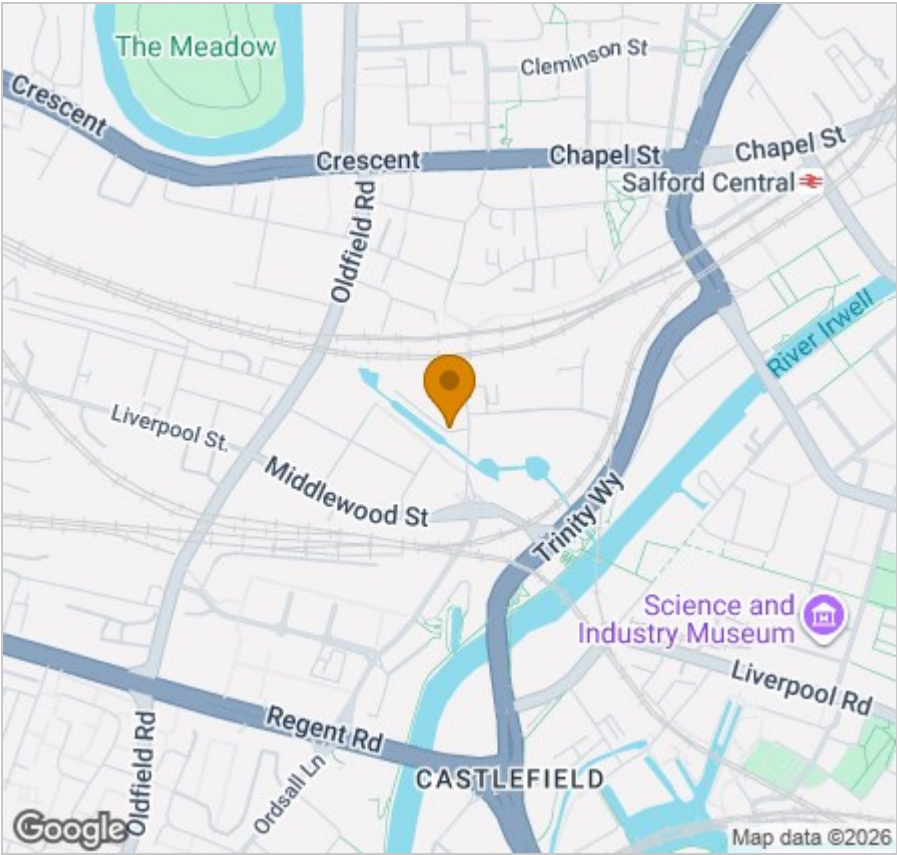


Viewing

Please contact our Reside Manchester Office on 0161 837 2840 if you wish to arrange a viewing appointment for this property or require further information.

These particulars, whilst believed to be accurate are set out as a general outline only for guidance and do not constitute any part of an offer or contract. Intending purchasers should not rely on them as statements of representation of fact, but must satisfy themselves by inspection or otherwise as to their accuracy. No person in this firms employment has the authority to make or give any representation or warranty in respect of the property.

Area Map



Energy Efficiency Graph

