

HARLESTONE GRANGE

**2, 3 & 4
bedroom homes**

Perfectly placed in Harlestone
Grange, Northampton

START EXPLORING



Contents

Section 01.

About us

Everything you need to know about who we are and how we operate.

[FIND OUT MORE >](#)

Section 02.

The local area

Getting to know the very best of your new location.

[FIND OUT MORE >](#)

Section 03.

Harlestone Grange

Find your new beautifully designed and expertly finished home.

[FIND OUT MORE >](#)



About us

Renting with us means freedom for you

When you rent with us you'll enjoy reliable property management, peace of mind and a truly hassle-free experience. Unlike private landlords, with us you'll never face the worry of unexpected eviction or last-minute surprises. Just a smooth, secure and straightforward way to rent.



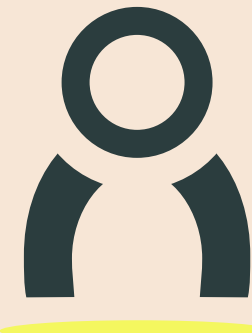


To us you're a
neighbour, not a number



24/7 SUPPORT

We'll look after you and your home for a hassle-free experience



PROFESSIONAL MANAGEMENT

Professional and personal renting with you every step of the way



RESIDENTS' APP

Log maintenance, manage your payments and contracts



ZERO DEPOSIT

No unexpected costs or hidden bills, including your deposit



PET FRIENDLY

Our homes are for all the family, even the furry ones



FLEXIBLE TERMS

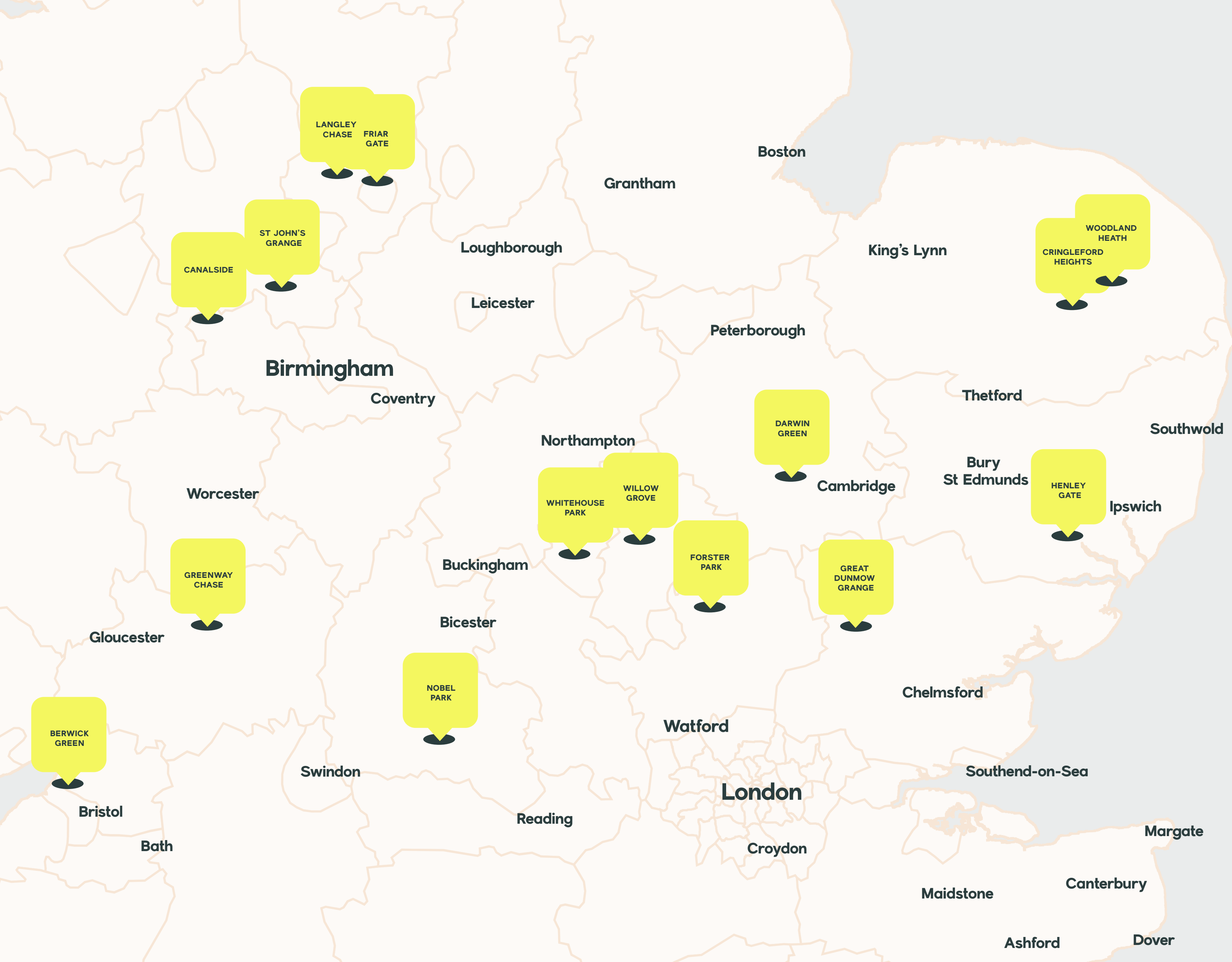
Love your home for as long as you like

What sets us apart

Our 2, 3 and 4 bedroom homes bring comfort, style, and convenience together – all designed to make life run smoother.

Enjoy hassle-free renting with features like our residents' app, zero-deposit scheme, and 24/7 support. With us, you get more than just a home – you get peace of mind and the freedom to live your way.

0% deposit – Terms and conditions apply, available on selected plots only. Please speak to the Lettings Team for further details.



Where we're located

Our homes, designed in locations you'll love just as much as we do, are found in the best places across the UK.

002.

The local area

HARLESTONE GRANGE



Discover Northampton

Northampton brings together the best of town and country with rich heritage, green open spaces and excellent connections, offering a balanced mix of modern living and local character.

The town is known for its welcoming community, independent cafés and shops, and a growing cultural scene that offers something to enjoy all year round. It's a place that continues to grow, evolve and look ahead. And here, you can too. Discover your new place to call home.

HARLESTONE GRANGE



Abington Lake

MENU

Building your future in Northampton

Northampton is a welcoming town with a strong sense of community, a place where connection and everyday living come naturally. Find yourself surrounded by green spaces, historic canals and the essentials that bring people together.

Perfectly placed with strong links to Milton Keynes, Birmingham, London and the surrounding countryside, Northampton offers effortless connections to work, leisure and life's next chapter. Our homes are thoughtfully located across the UK. Renting here is designed to feel straightforward and personal, reflecting everything we stand for: security, a sense of belonging, flexibility and care.



Northampton's National Lift Tower



Northampton Guild Hall

HARLESTONE GRANGE

Effortless connections

From Northampton, getting where you need to be is simple. Excellent road links, nearby rail connections and local transport options keep everything within easy reach, from surrounding towns to city destinations further afield.



BY ROAD

M6 Birmingham
60 minutes

A14 Cambridge
75 minutes

M1 London
100 minutes



BY BUS

9A Northampton Town Centre
45 minutes

96A, X6 Milton Keynes
105 minutes

9, 41 Bedford
135 minutes



BY BIKE

There is a network of cycle paths in and around Northampton, connecting you to local routes across the town. You'll have direct access to the town centre, nearby green spaces and surrounding countryside to enjoy by bike.



BY TRAIN

As a well-connected location, Northampton offers easy rail access to some of the region's most vibrant destinations:

BIRMINGHAM



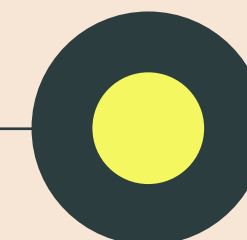
In just 65 minutes, connect to Birmingham – a dynamic city offering shopping, dining and seamless links nationwide.

OXFORD



In around 1 hour 30 minutes, connect to Oxford – a world-renowned city known for its historic university, cultural attractions and vibrant dining scene.

NORTHAMPTON STATION



LONDON EUSTON



In under an hour, connect to London – offering a simple, stress-free route into the capital for work, leisure or further travel.

Travel times taken from google.co.uk/maps and are approximate only.

HARLESTONE GRANGE

Local amenities

ENTERTAINMENT / LEISURE

- 01** Marseille Restaurant 4.3 miles | 12 min drive
- 02** Old Bank 5.2 miles | 14 min drive
- 03** Fox & Hounds Lower Harlestone 1.8 miles | 4 min drive
- 04** Althorp House 4.0 miles | 10 min drive
- 05** Delapre Golf Centre 7.5 miles | 22 min drive
- 06** The Racecourse Park 5.2 miles | 16 min drive
- 07** Northampton Town Football Club 4.3 miles | 12 min drive
- 08** Nuffield Health Northampton Fitness & Wellbeing Gym 4.2 miles | 12 min drive
- 09** Dallington Park 3.0 miles | 7 min drive
- 10** Trilogy Active at Duston Sports Centre 3.0 miles | 7 min drive
- 11** The Hart 1.4 miles | 3 min drive

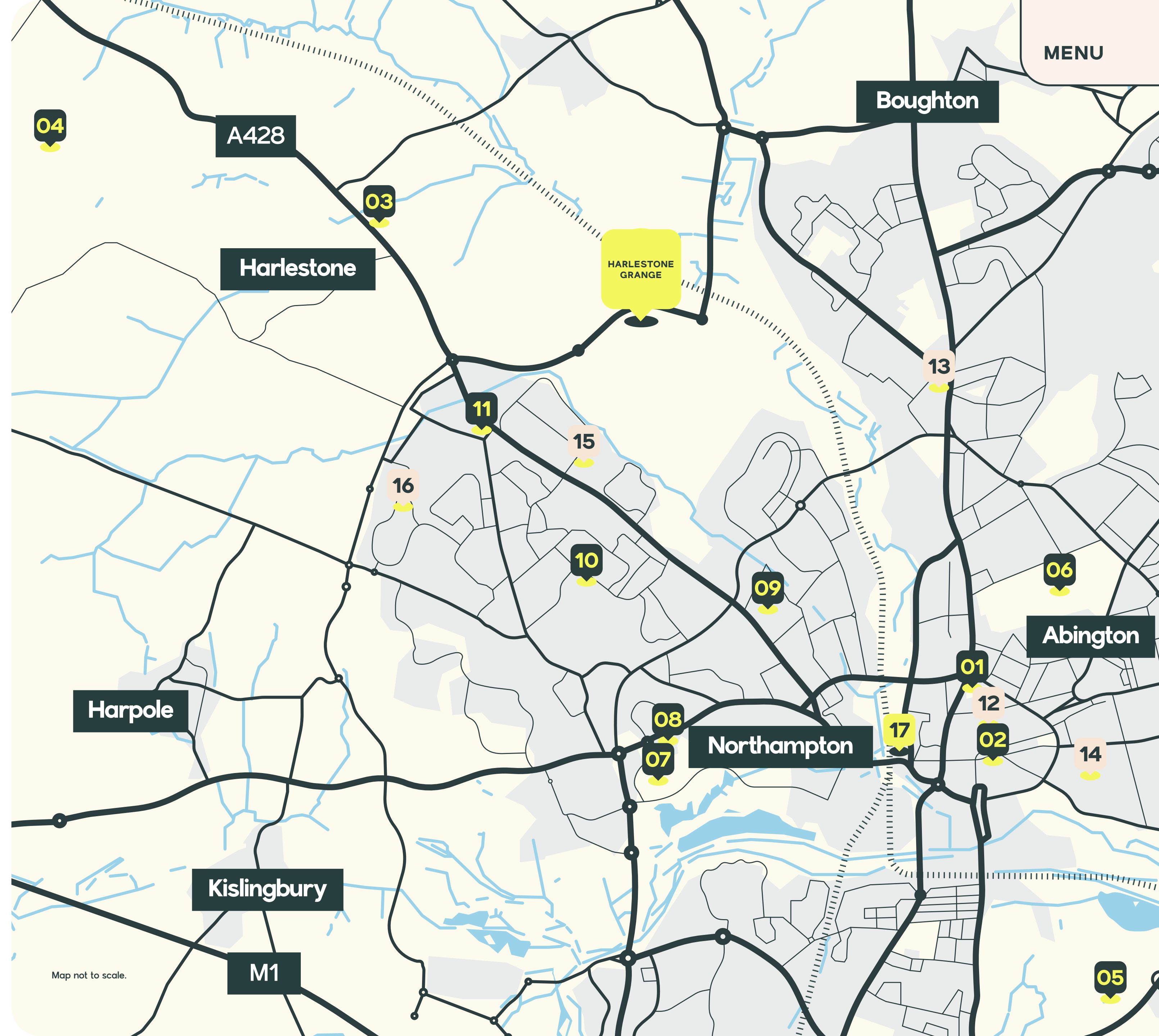
RETAIL / ESSENTIALS

- 12** Grosvenor Shopping Northampton 4.7 miles | 14 min drive
- 13** Waitrose & Partners 3.4 miles | 8 min drive
- 14** Northampton General Hospital 5.6 miles | 17 min drive
- 15** Lidl 1.9 miles | 5 min drive
- 16** Tesco Express 2.0 miles | 5 min drive

TRAVEL

- 17** Northampton Train Station 4.0 miles | 10 min drive

Distances and travel times taken from google.co.uk/maps and are approximate only.



Map not to scale.



Local schools

Northampton has a fantastic choice of schools, from pre-school right through to college. With so many high-quality options nearby, you can feel confident your children will have the best start in life. Here are just a few of the great schools in the area.

PRE-SCHOOL / NURSERY

**Highfield
Pre-School**

2.4 miles

**Whitehills
Nursery School**

2.7 miles

**The Red Brick
Day Nursery**

3.1 miles

PRIMARY SCHOOLS

**St Mary's Catholic
Primary School**

3.3 miles

**Kingsthorpe Village
Primary School**

3.4 miles

**Kings Heath
Primary Academy**

3.7 miles

SECONDARY SCHOOLS

**The Duston
School**

2.7 miles

**Kingsthorpe
College**

3.9 miles

**Malcolm Arnold
Academy**

4.0 miles

HIGHER EDUCATION

**Moulton
College**

4.6 miles

**University of
Northampton**

5.2 miles

**Northampton
College**

5.8 miles

Distances taken from [google.co.uk/maps](https://www.google.co.uk/maps) and are approximate only.

03.

Harlestone Grange

HARLESTONE GRANGE

MENU



HARLESTONE GRANGE

MENU



HARLESTONE GRANGE

Specifications

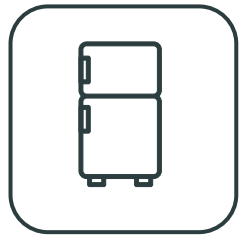
Our homes come ready for you to move straight in - with high-quality finishes, modern appliances and thoughtful details throughout. Everything's designed for easy living, so you can settle in and make it your own from day one.



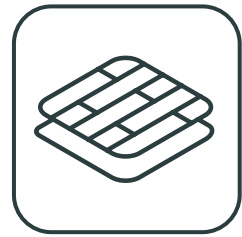
ULTRAFAST BROADBAND



MODERN KITCHENS



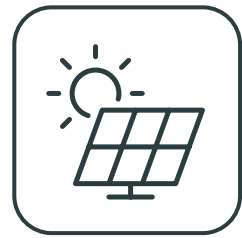
INTEGRATED WHITE GOODS



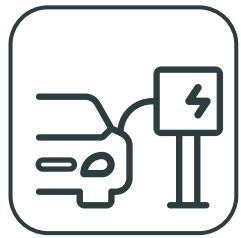
UPGRADED FINISHES



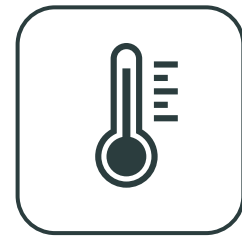
ENERGY-EFFICIENT HOMES



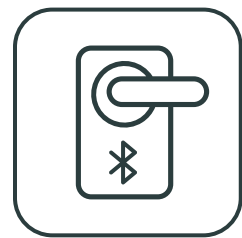
SOLAR PANELS*



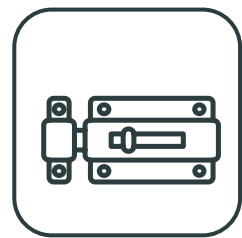
EV CHARGER ENABLED^



DUAL ZONE HEATING*



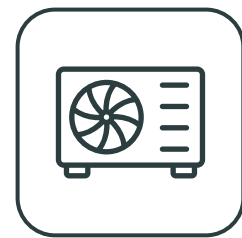
SMART LOCK



SOFT CLOSE HINGES



PRIVATE GARDENS



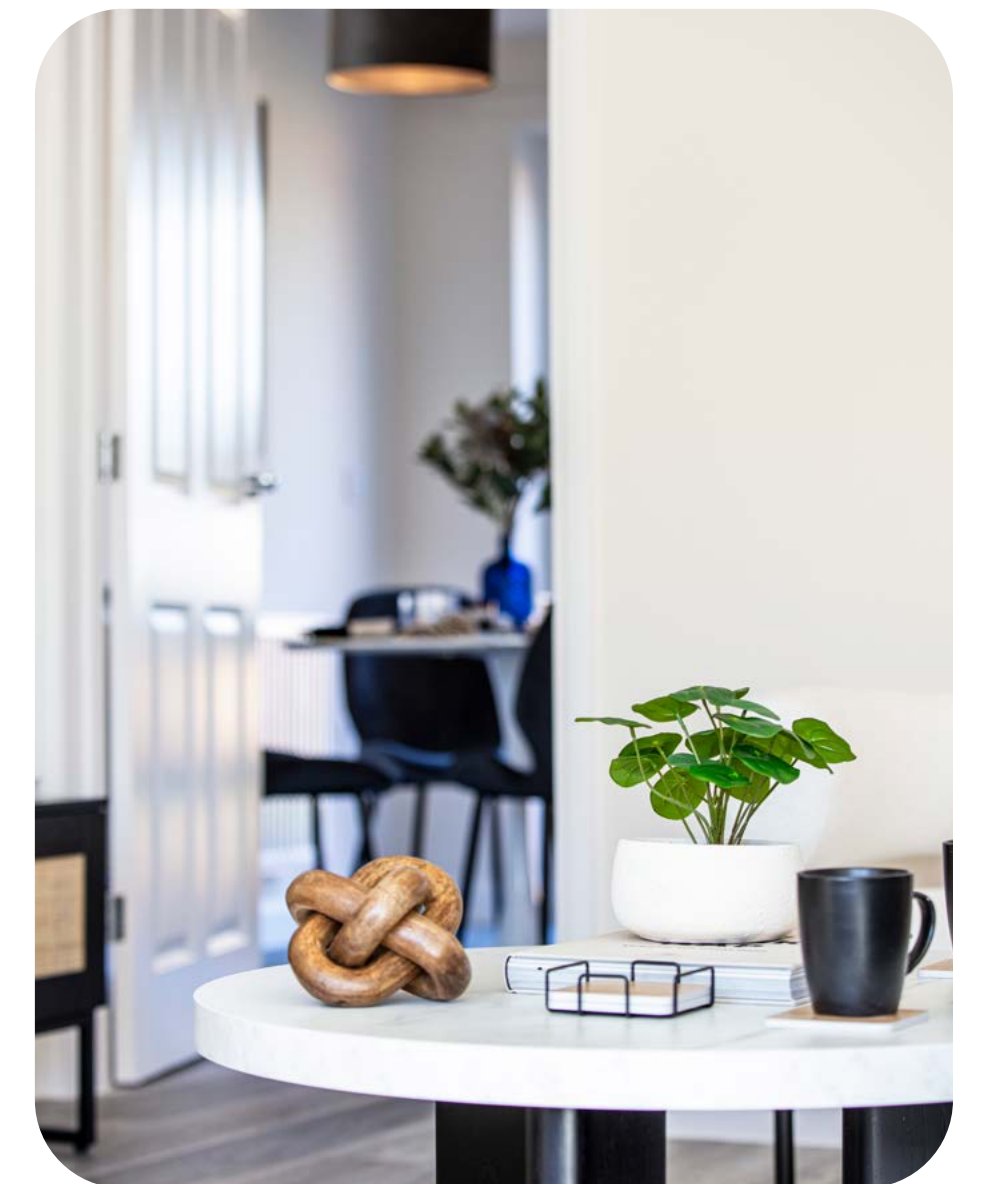
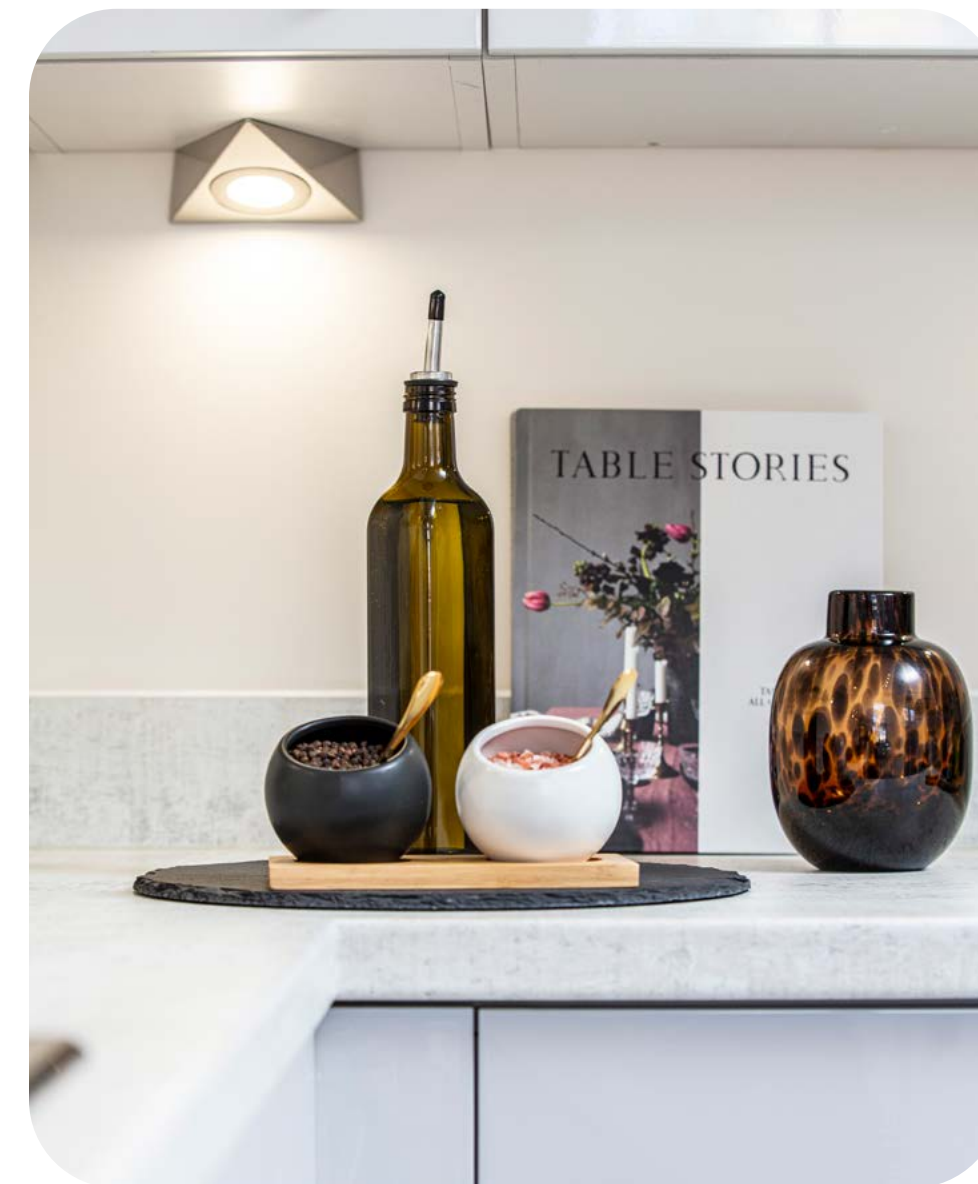
AIR SOURCE HEAT PUMP*

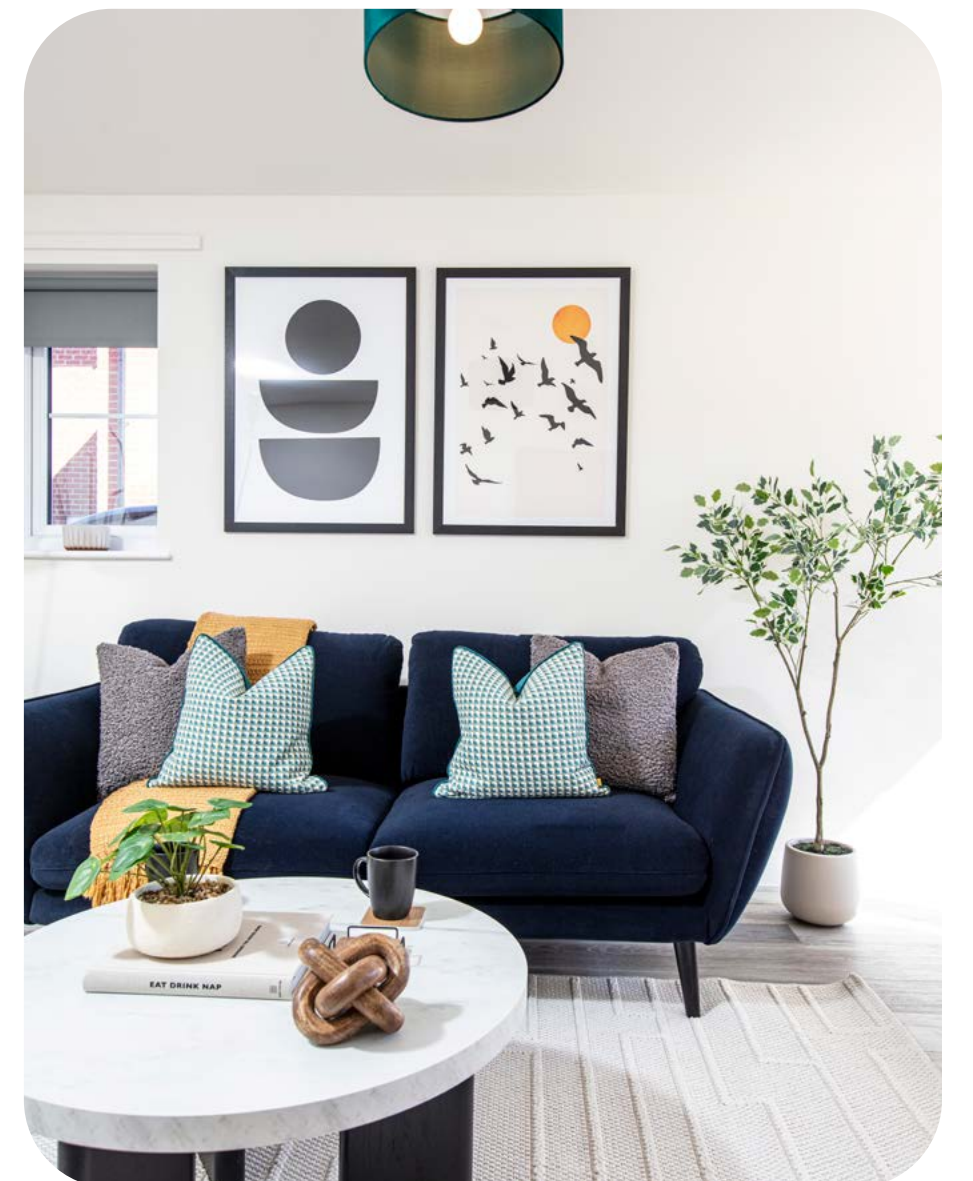
*Specification varies per house type and plot. ^EV wiring available for charger to be installed. Not financially covered by Allsop Lettings Management. Please contact us for further details.



MENU

Images are indicative only.





HARLESTONE GRANGE

MENU



Image is indicative only.

HARLESTONE GRANGE

2 bedroom homes

KENLEY
Plots: 82–84, 90, 91, 102,
124 & 125

3 bedroom homes

ENNERDALE
Plots: 85, 101, 108 & 121

LEYBOURNE
Plots: 88, 89, 93, 94,
110 & 111

WILTON
Plots: 92 & 103

NORBURY
Plots: 105, 106, 113, 114,
119 & 120

LUTTERWORTH
Plots: 109, 112, 122 & 123

NEWPORT
Plots: 115–118

4 bedroom homes

KINGSWOOD
Plots: 78, 79 & 99

NUNWICK
Plots: 86 & 87

WAVERTON
Plots: 96 & 100

TBC
Plot: 25

Key

BCP Bin Collection Point
SS Sub Station
V Visitor Parking



The development layout does not show details of gradients of land, boundary treatments, local authority street lighting or landscaping. It is our intention to build in accordance with this layout. However, there may be occasions when the house designs, boundaries, landscaping and positions of roads and footpaths change as the development proceeds. Please speak to a member of our Lettings Team for more details.



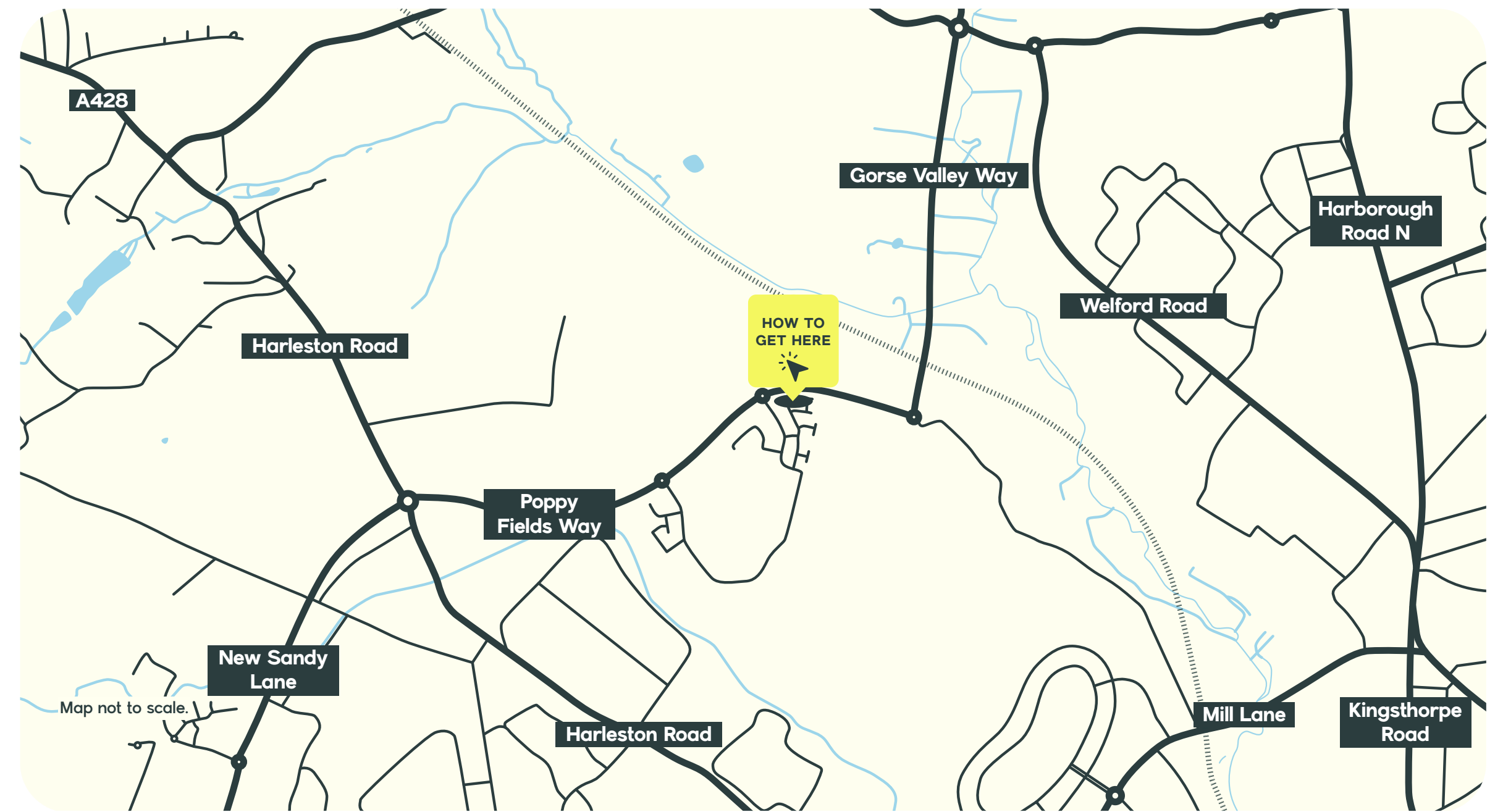
Your route home

FROM THE NORTH

Join the M1 southbound and exit onto the A428 towards Northampton. Continue onto York Way, then follow onto Poppy Fields Way and Hanafey Way. Continue ahead until you reach your new home.

FROM THE SOUTH

Take the M1 northbound and exit onto the A43 towards Northampton. Continue onto the A5123, then follow Upton Way and Tollgate Way. Continue onto Bants Lane and then to the A428. Follow Poppy Fields Way onto Hanafey Way, continuing until you reach your new home.



HARLESTONE GRANGE



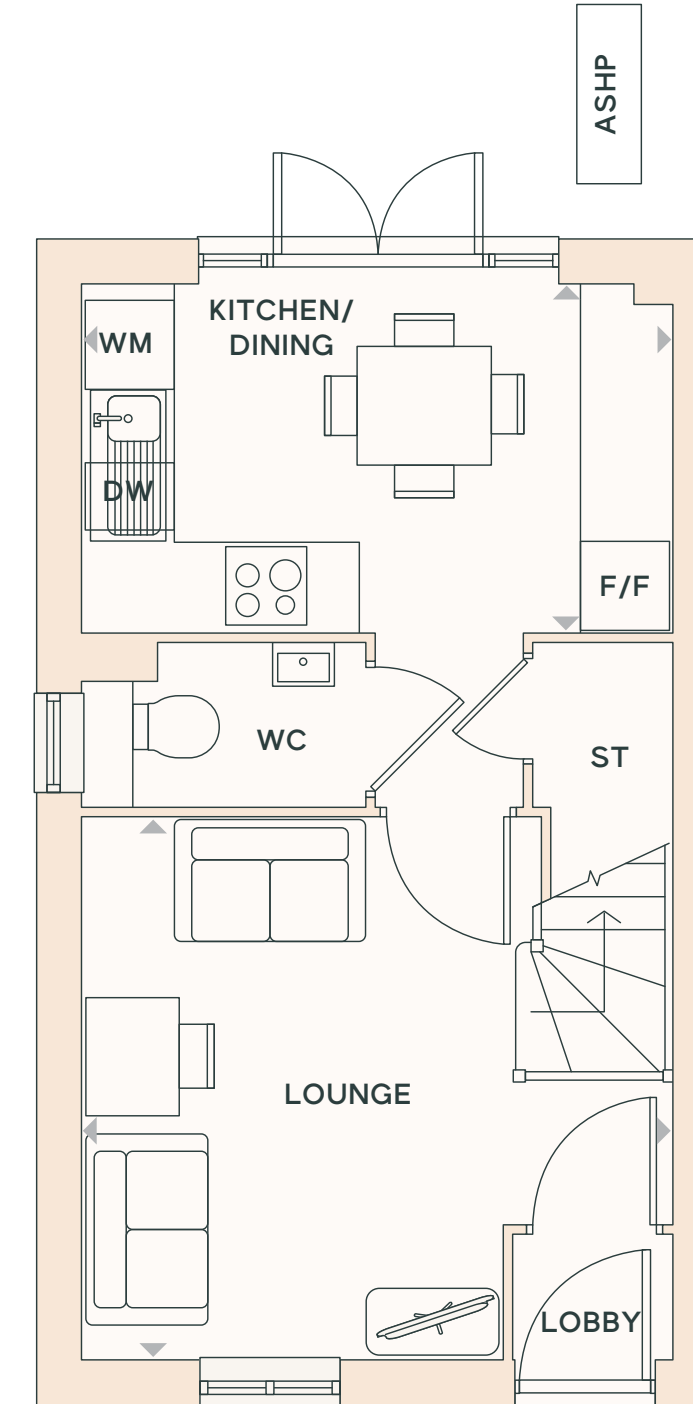
Kenley

2 bedroom home

Plots 82-84, 90, 91, 102, 124 & 125

KEY

- ◄► Dimension location
- DW Dishwasher
- F/F Fridge/Freezer
- ST Store
- W Wardrobe space
- WC Cloakroom
- WM Washing Machine



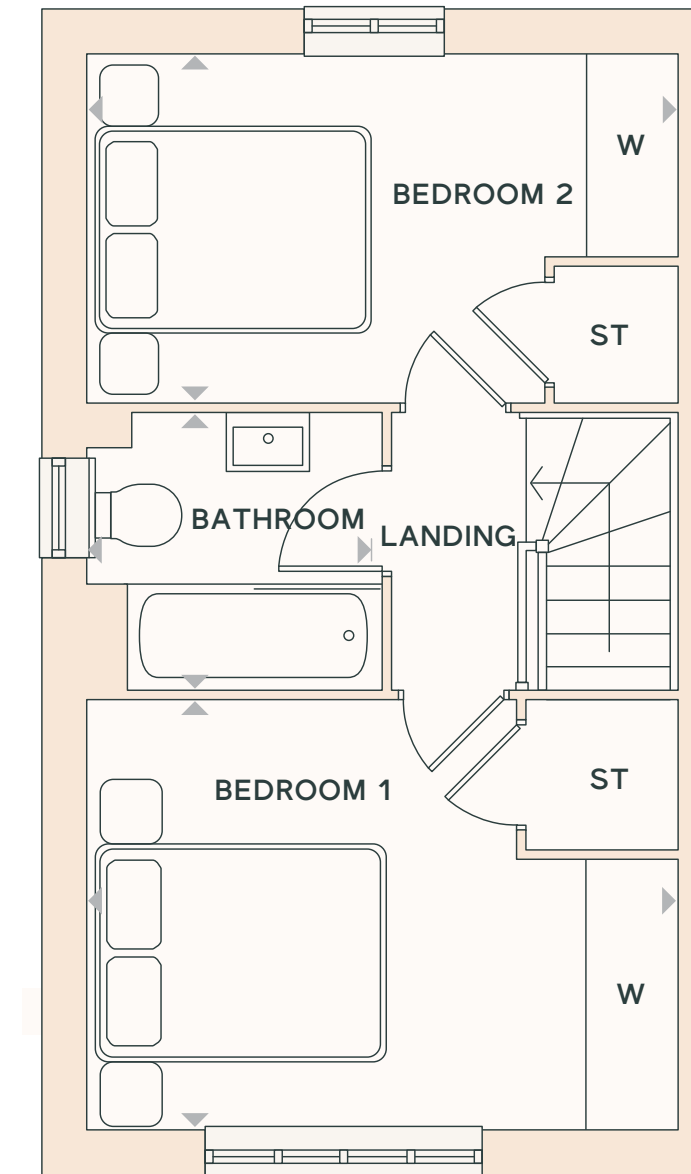
GROUND FLOOR

KITCHEN/DINING

3.94m x 3.45m | 12'11" x 11'3"

LOUNGE

3.94m x 3.66m | 12'11" x 12'0"



FIRST FLOOR

BEDROOM 1

3.94m x 2.86m | 12'11" x 9'4"

BEDROOM 2

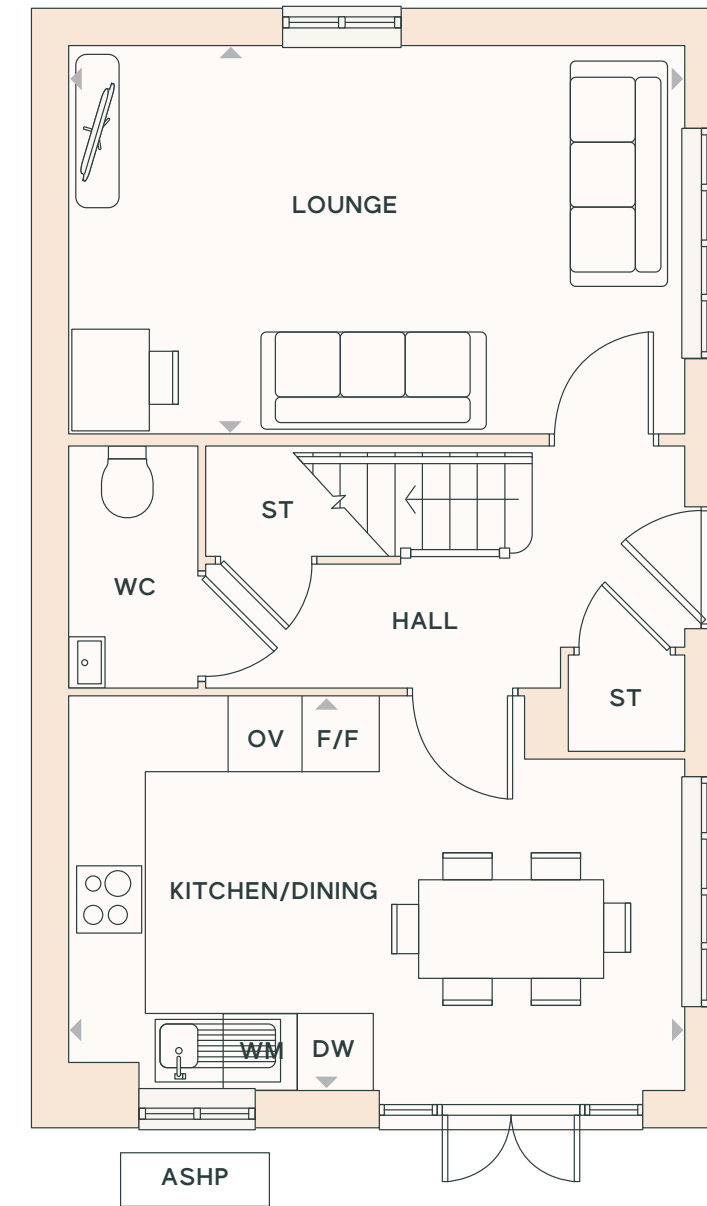
3.94m x 2.31m | 12'11" x 7'6"

BATHROOM

1.95m x 1.85m | 6'4" x 6'0"

Image is indicative only. Floorplans shown are indicative only. The kitchen layout and furniture positions are for indicative purposes only. All dimensions indicated are approximate and should not be relied upon for carpet sizes or items of furniture. The developer reserves the right to make changes to these plans prior to exchange of contracts. For exact plot specification, details of external and internal finishes, dimensions and floorplan differences, please speak to a member of our Lettings Team for more details.

HARLESTONE GRANGE



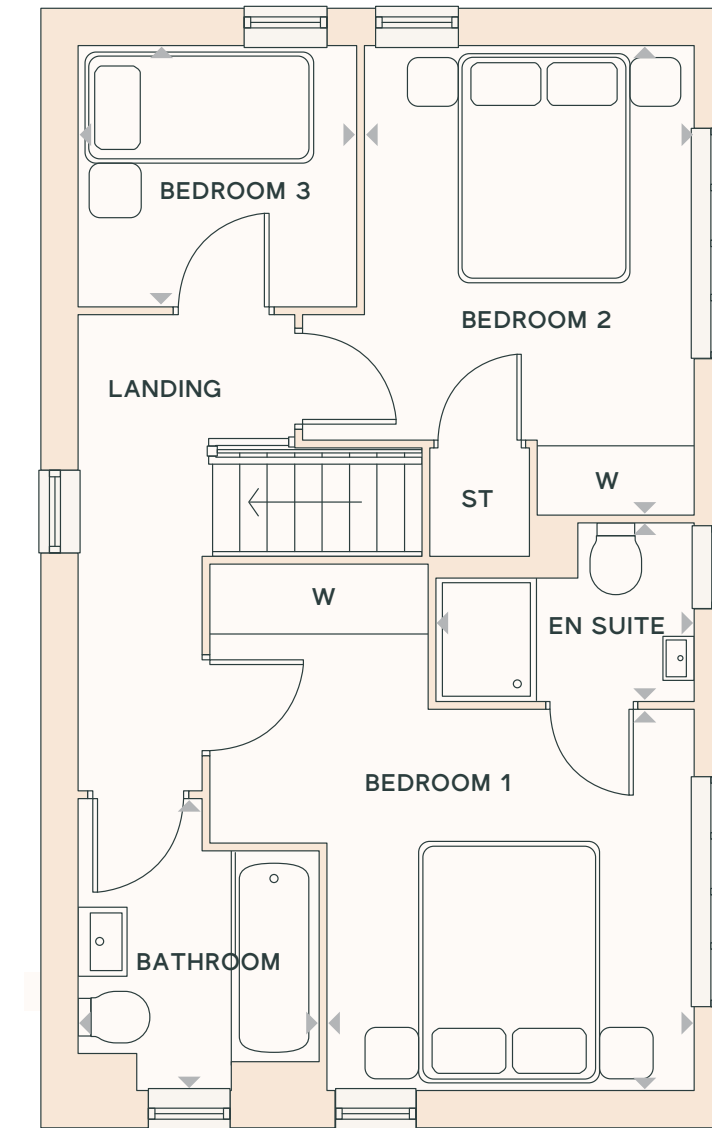
GROUND FLOOR

KITCHEN/DINING

4.95m x 3.17m | 16'2" x 10'4"

LOUNGE

4.95m x 3.10m | 16'2" x 10'2"



FIRST FLOOR

BEDROOM 1

4.23m x 3.89m | 13'10" x 12'9"

EN SUITE

2.05m x 1.42m | 6'8" x 4'7"

BEDROOM 2

3.78m x 3.14m | 12'4" x 10'3"

BEDROOM 3

2.22m x 2.08m | 7'3" x 6'9"

BATHROOM

2.32m x 1.92m | 7'7" x 6'3"

Ennerdale

3 bedroom home

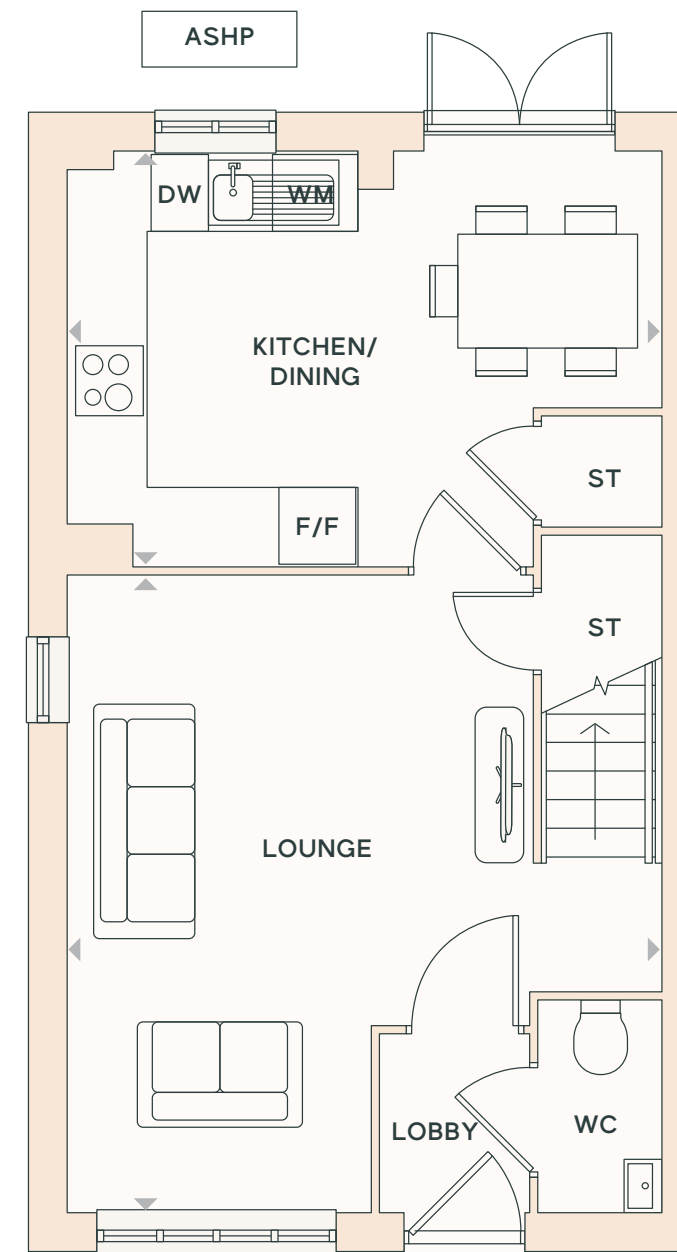
Plots 85, 101, 108 & 121

KEY

- ASHP Air Source Heat Pump
- ◄► Dimension location
- DW Dishwasher
- F/F Fridge/Freezer
- OV Oven
- ST Store
- W Wardrobe space
- WC Cloakroom
- WM Washing Machine

Image is indicative only. Floorplans shown are indicative only. The kitchen layout and furniture positions are for indicative purposes only. All dimensions indicated are approximate and should not be relied upon for carpet sizes or items of furniture. The developer reserves the right to make changes to these plans prior to exchange of contracts. For exact plot specification, details of external and internal finishes, dimensions and floorplan differences, please speak to a member of our Lettings Team for more details.

HARLESTONE GRANGE



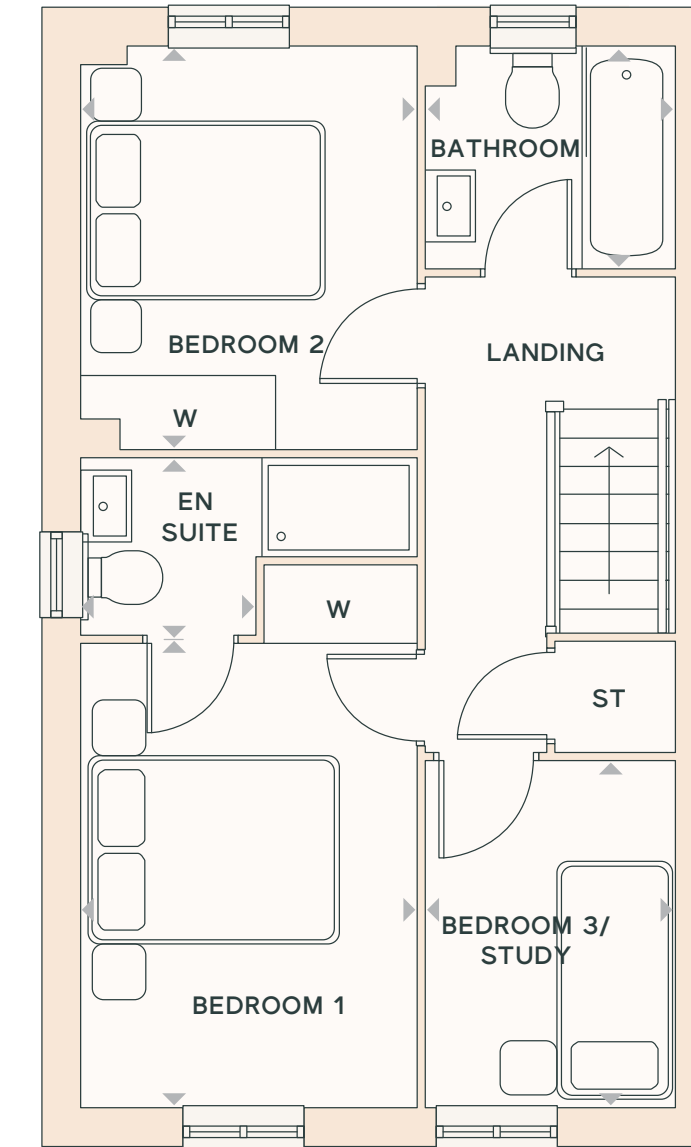
GROUND FLOOR

KITCHEN/DINING

4.64m x 3.24m | 15'2" x 10'7"

LOUNGE

4.98m x 3.64m | 16'4" x 11'11"



FIRST FLOOR

BEDROOM 1

3.63m x 2.63m | 11'10" x 8'7"

EN SUITE

2.63m x 1.39m | 8'7" x 4'6"

BEDROOM 2

3.15m x 2.63m | 10'4" x 8'7"

BEDROOM 3/STUDY

2.71m x 1.95m | 8'10" x 6'4"

BATHROOM

1.95m x 1.74m | 6'4" x 5'8"

Leybourne

3 bedroom home

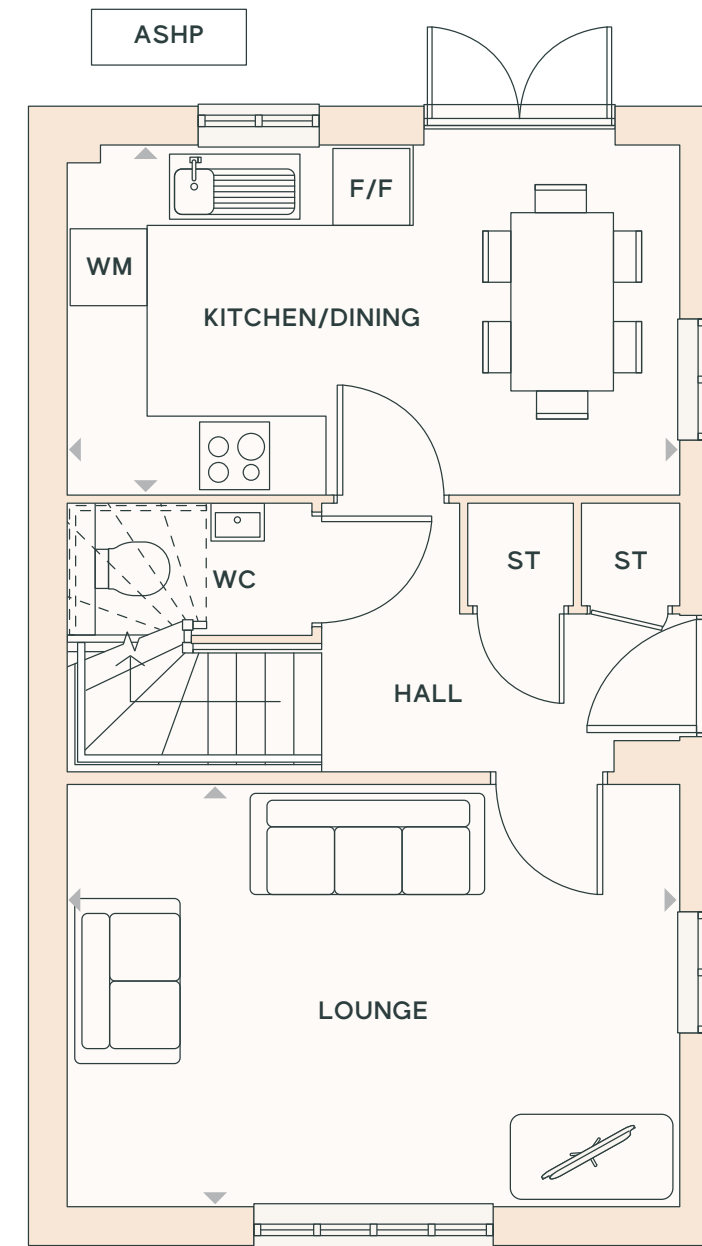
Plots 88, 89, 93, 94, 110 & 111

KEY

- ASHP Air Source Heat Pump
- ◄► Dimension location
- DW Dishwasher
- F/F Fridge/Freezer
- ST Store
- W Wardrobe space
- WC Cloakroom
- WM Washing Machine

Image is indicative only. Floorplans shown are indicative only. The kitchen layout and furniture positions are for indicative purposes only. All dimensions indicated are approximate and should not be relied upon for carpet sizes or items of furniture. The developer reserves the right to make changes to these plans prior to exchange of contracts. For exact plot specification, details of external and internal finishes, dimensions and floorplan differences, please speak to a member of our Lettings Team for more details.

HARLESTONE GRANGE



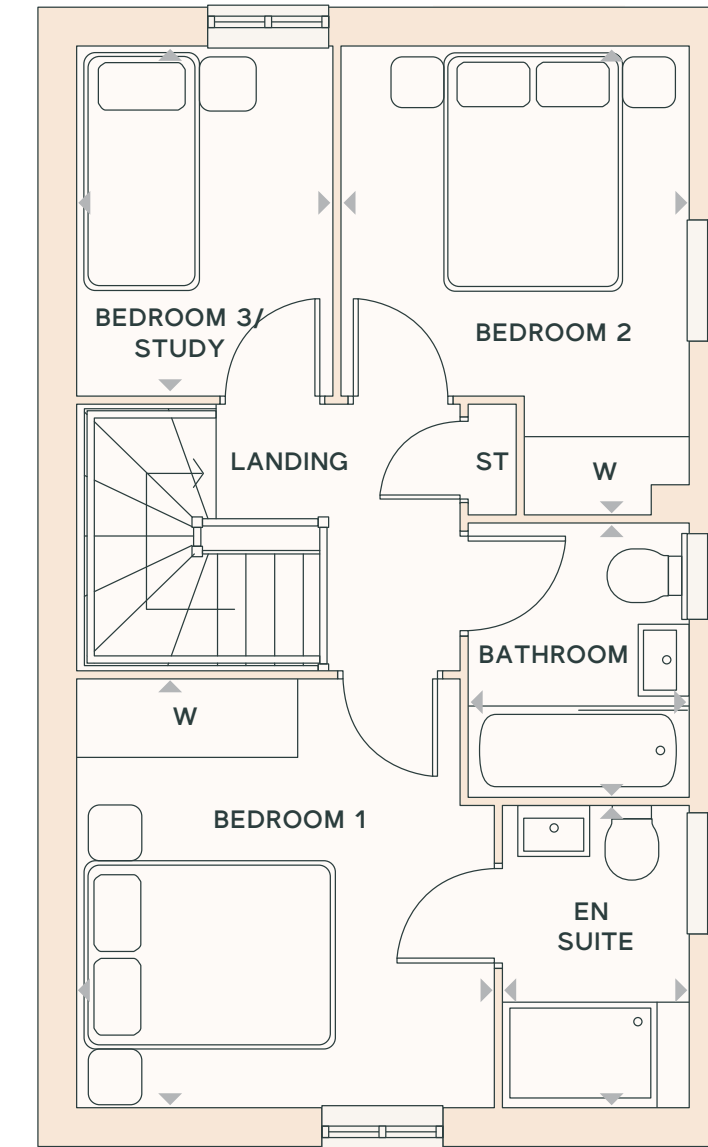
GROUND FLOOR

KITCHEN/DINING

4.78m x 2.73m | 15'8" x 8'11"

LOUNGE

4.78m x 3.30m | 15'8" x 10'9"



FIRST FLOOR

BEDROOM 1

3.35m x 3.26m | 10'11" x 10'8"

EN SUITE

2.35m x 1.45m | 7'8" x 4'9"

BEDROOM 2

3.66m x 2.71m | 12'0" x 8'10"

BEDROOM 3/STUDY

2.73m x 2.00m | 8'11" x 6'6"

BATHROOM

2.14m x 1.91m | 7'0" x 6'3"

Wilton

3 bedroom home

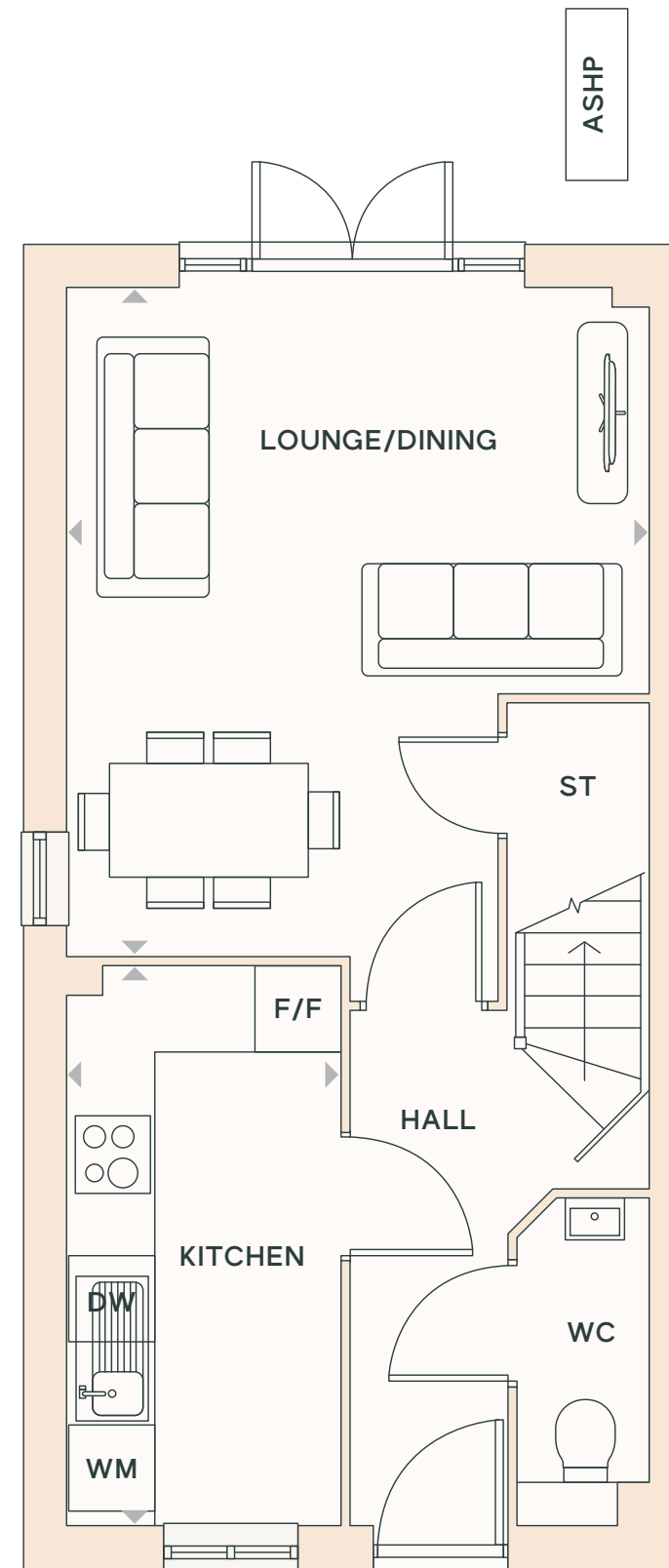
Plots 92 & 103

KEY

- ASHP Air Source Heat Pump
- ◄► Dimension location
- F/F Fridge/Freezer
- Restricted Headroom
- ST Store
- W Wardrobe space
- WC Cloakroom
- WM Washing Machine

Image is indicative only. Floorplans shown are indicative only. The kitchen layout and furniture positions are for indicative purposes only. All dimensions indicated are approximate and should not be relied upon for carpet sizes or items of furniture. The developer reserves the right to make changes to these plans prior to exchange of contracts. For exact plot specification, details of external and internal finishes, dimensions and floorplan differences, please speak to a member of our Lettings Team for more details.

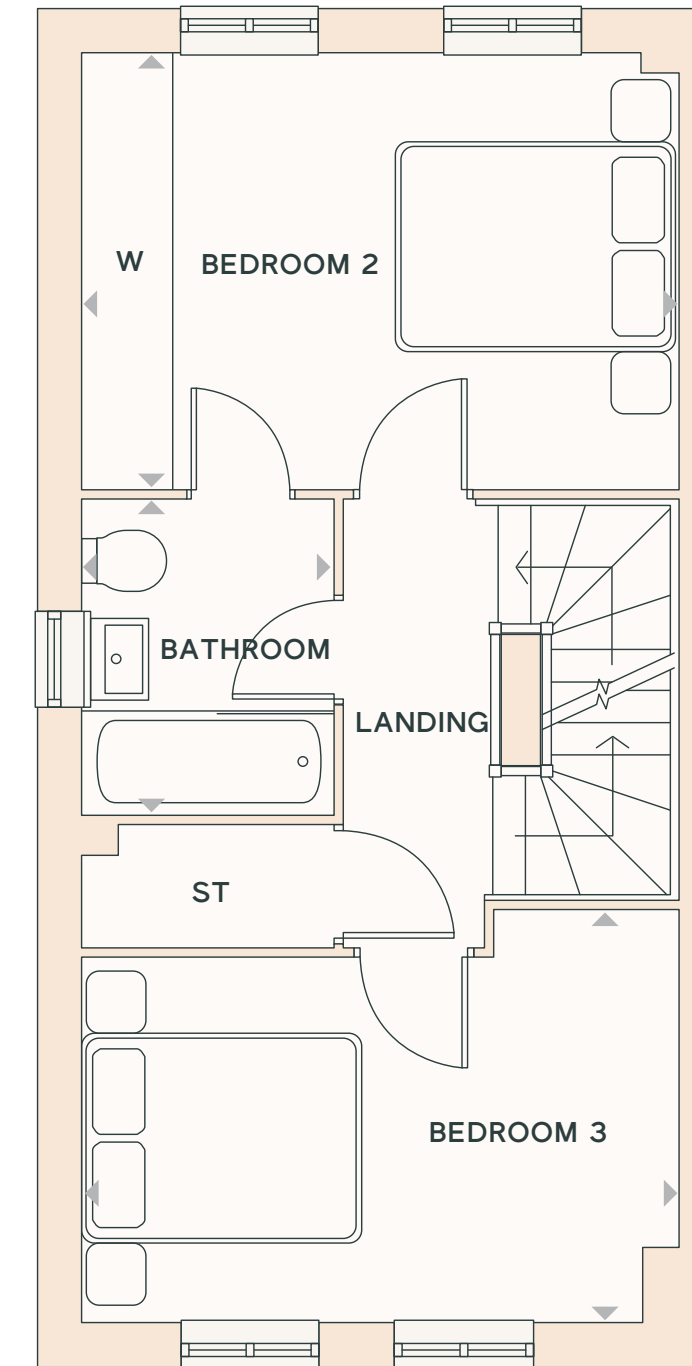
HARLESTONE GRANGE



GROUND FLOOR

KITCHEN
3.94m x 1.93m | 12'11" x 6'3"

LOUNGE/DINING
4.71m x 4.10m | 15'5" x 13'5"

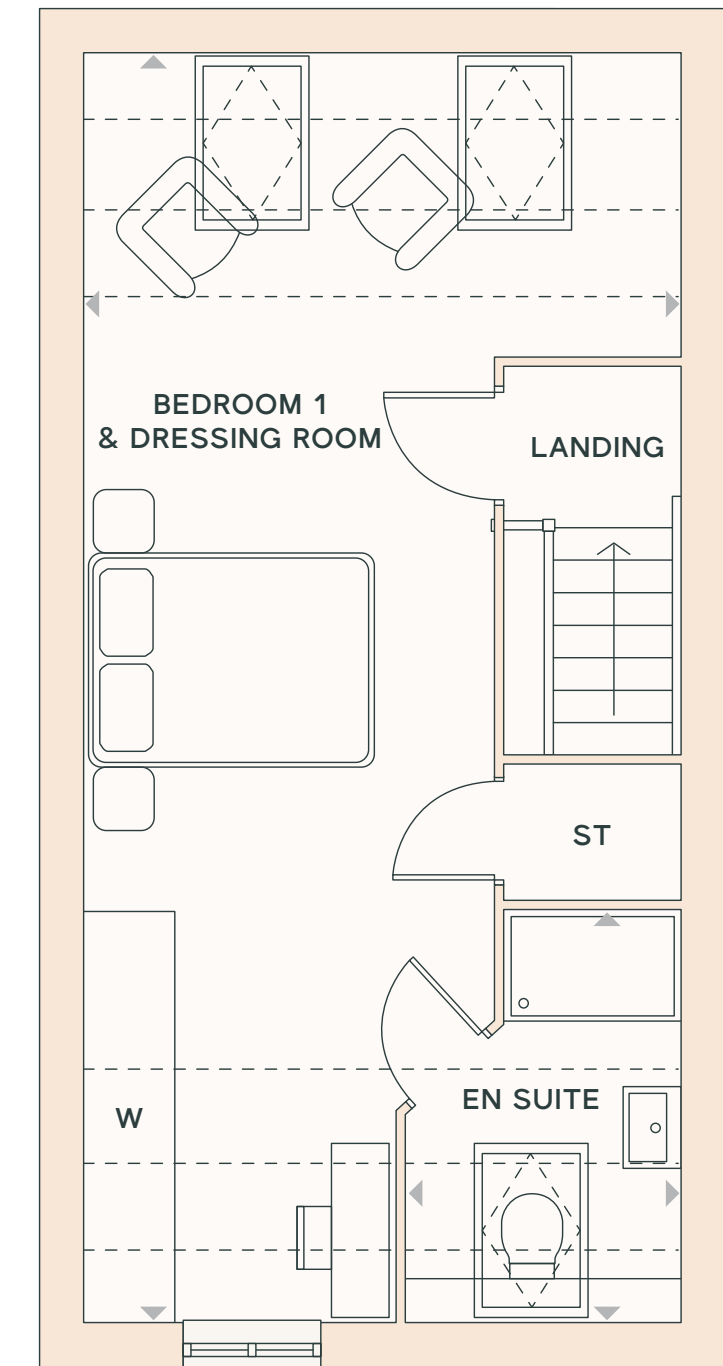


FIRST FLOOR

BEDROOM 2
4.10m x 3.00m | 13'5" x 9'10"

BEDROOM 3
4.10m x 2.83m | 13'5" x 9'3"

BATHROOM
2.17m x 1.73m | 7'1" x 5'8"



SECOND FLOOR

BEDROOM 1 & DRESSING ROOM
9.32m x 4.10m | 30'6" x 13'5"

EN SUITE
2.83m x 1.89m | 9'3" x 6'2"

Norbury

3 bedroom home

Plots 105, 106, 113, 114, 119 & 120

KEY

- ASHP Air Source Heat Pump
- ◀▶ Dimension location
- DW Dishwasher
- F/F Fridge/Freezer
- Restricted Headroom
- ◻ Rooflight
- ST Store
- W Wardrobe space
- WC Cloakroom
- WM Washing Machine

Image is indicative only. Floorplans shown are indicative only. The kitchen layout and furniture positions are for indicative purposes only. All dimensions indicated are approximate and should not be relied upon for carpet sizes or items of furniture. The developer reserves the right to make changes to these plans prior to exchange of contracts. For exact plot specification, details of external and internal finishes, dimensions and floorplan differences, please speak to a member of our Lettings Team for more details.

HARLESTONE GRANGE



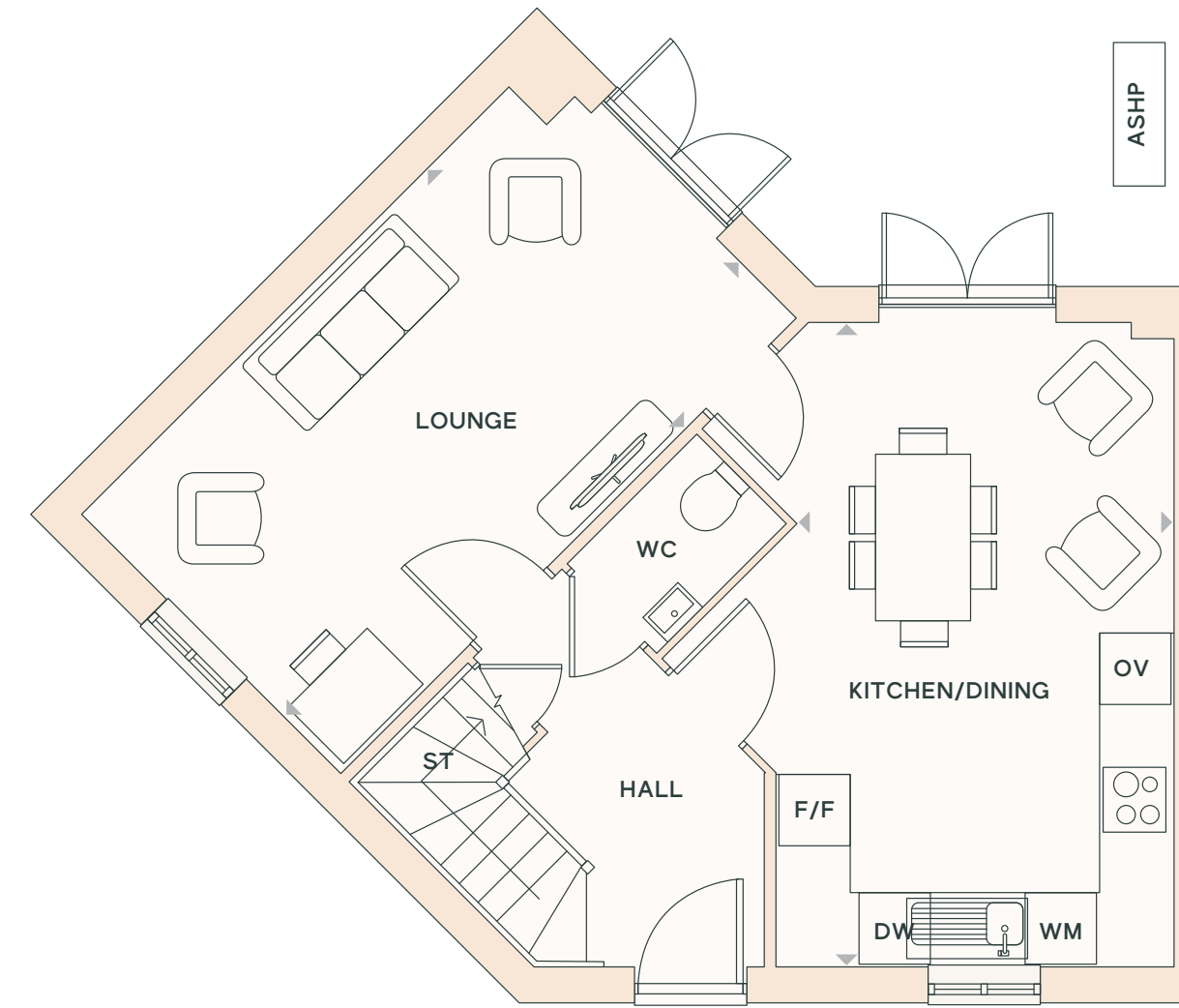
Lutterworth

3 bedroom home

Plots 109, 112, 122 & 123

KEY

- ASHP Air Source Heat Pump
- ◄► Dimension location
- DW Dishwasher
- F/F Fridge/Freezer
- OV Oven
- ST Store
- W Wardrobe space
- WC Cloakroom
- WM Washing Machine



GROUND FLOOR

KITCHEN/DINING

3.94m x 3.45m | 12'11" x 11'3"

LOUNGE

3.94m x 3.66m | 12'11" x 12'0"



FIRST FLOOR

BEDROOM 1

3.94m x 2.86m | 12'11" x 9'4"

EN SUITE

2.19m x 1.68m | 7'2" x 5'6"

BEDROOM 2

3.94m x 2.31m | 12'11" x 7'6"

BEDROOM 3

3.57m x 2.17m | 11'8" x 7'1"

BATHROOM

1.70m x 2.20m | 5'7" x 7'3"

Image is indicative only. Floorplans shown are indicative only. The kitchen layout and furniture positions are for indicative purposes only. All dimensions indicated are approximate and should not be relied upon for carpet sizes or items of furniture. The developer reserves the right to make changes to these plans prior to exchange of contracts. For exact plot specification, details of external and internal finishes, dimensions and floorplan differences, please speak to a member of our Lettings Team for more details.

HARLESTONE GRANGE

MENU



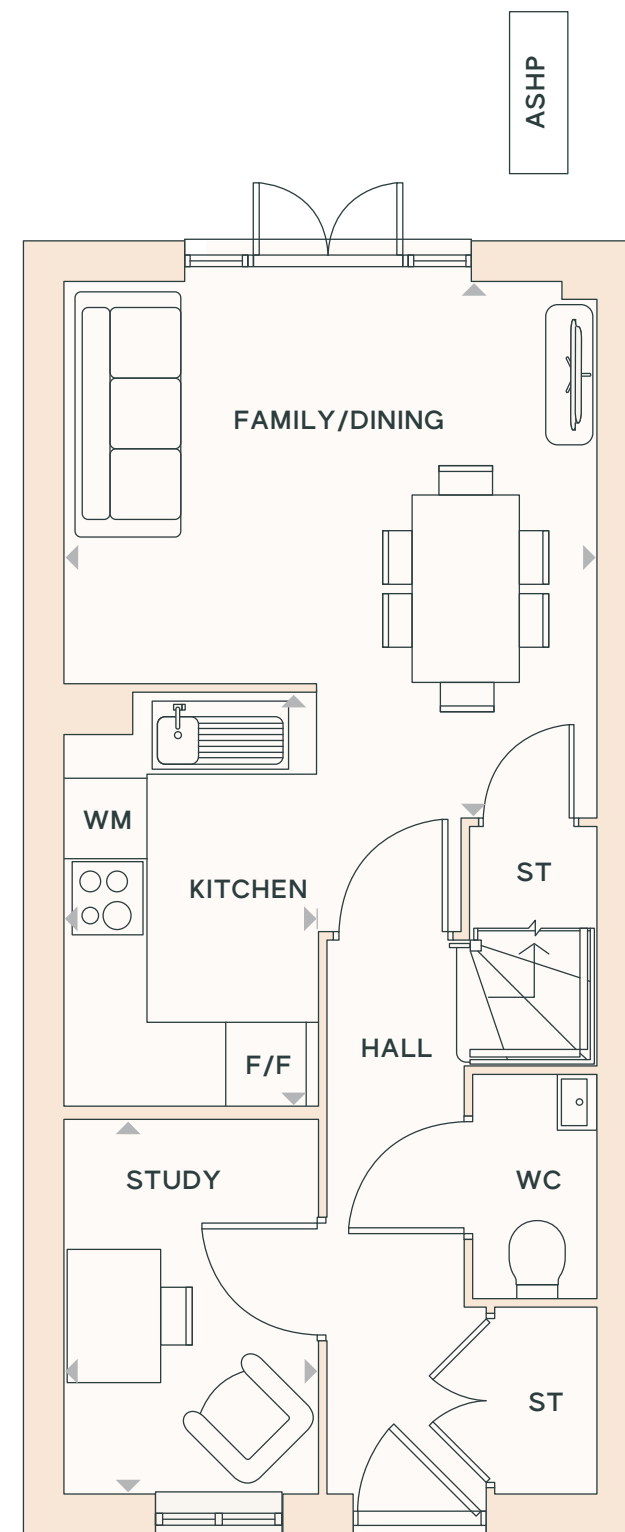
Newport

3 bedroom home

Plots 115-118

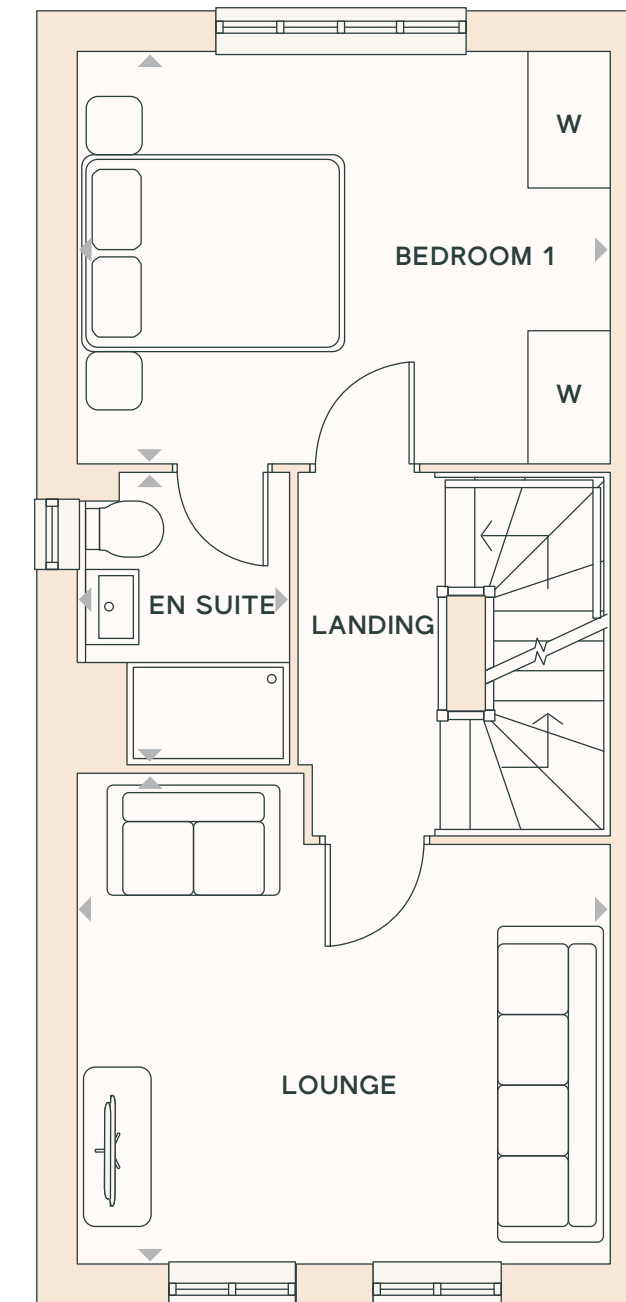
KEY

- ASHP Air Source Heat Pump
- ◄► Dimension location
- F/F Fridge/Freezer
- ST Store
- W Wardrobe space
- WC Cloakroom
- WM Washing Machine



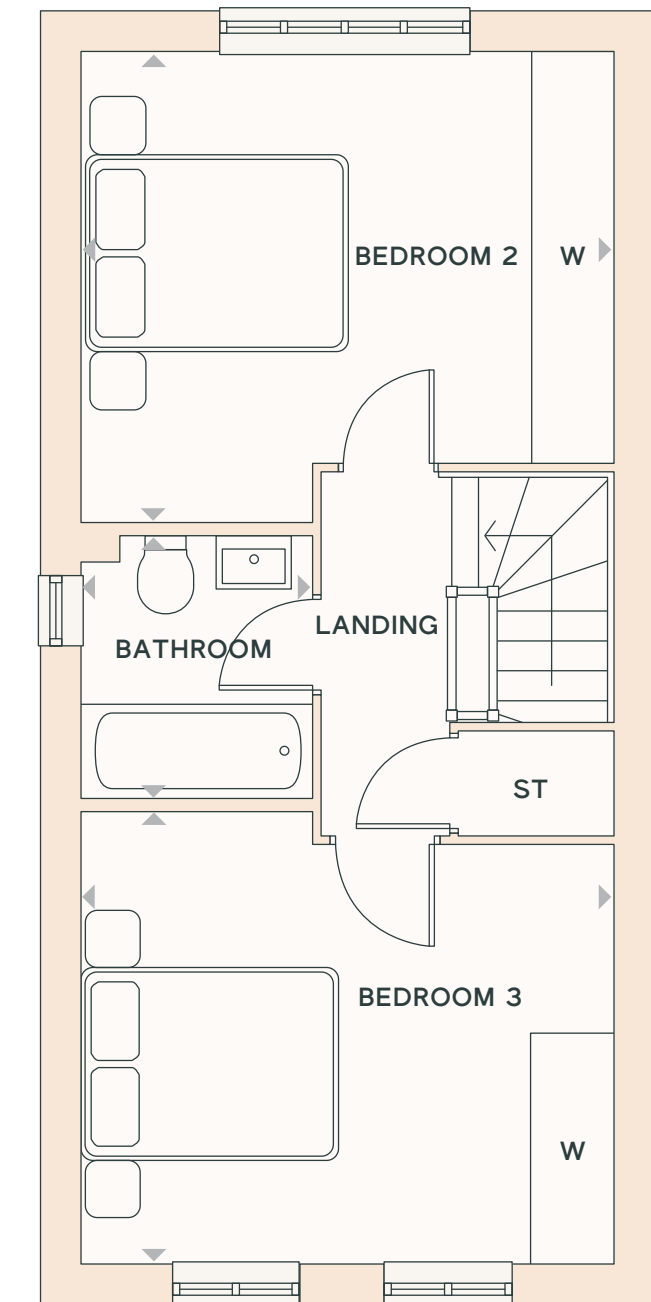
GROUND FLOOR

- KITCHEN**
3.09m x 1.89m | 10'1" x 6'2"
- FAMILY/DINING**
4.00m x 3.98m | 13'1" x 13'0"
- STUDY**
2.79m x 1.90m | 9'1" x 6'2"



FIRST FLOOR

- LOUNGE**
3.98m x 3.66m | 13'0" x 12'0"
- BEDROOM 1**
3.98m x 3.07m | 13'0" x 10'0"
- EN SUITE**
2.18m x 1.58m | 7'1" x 5'2"



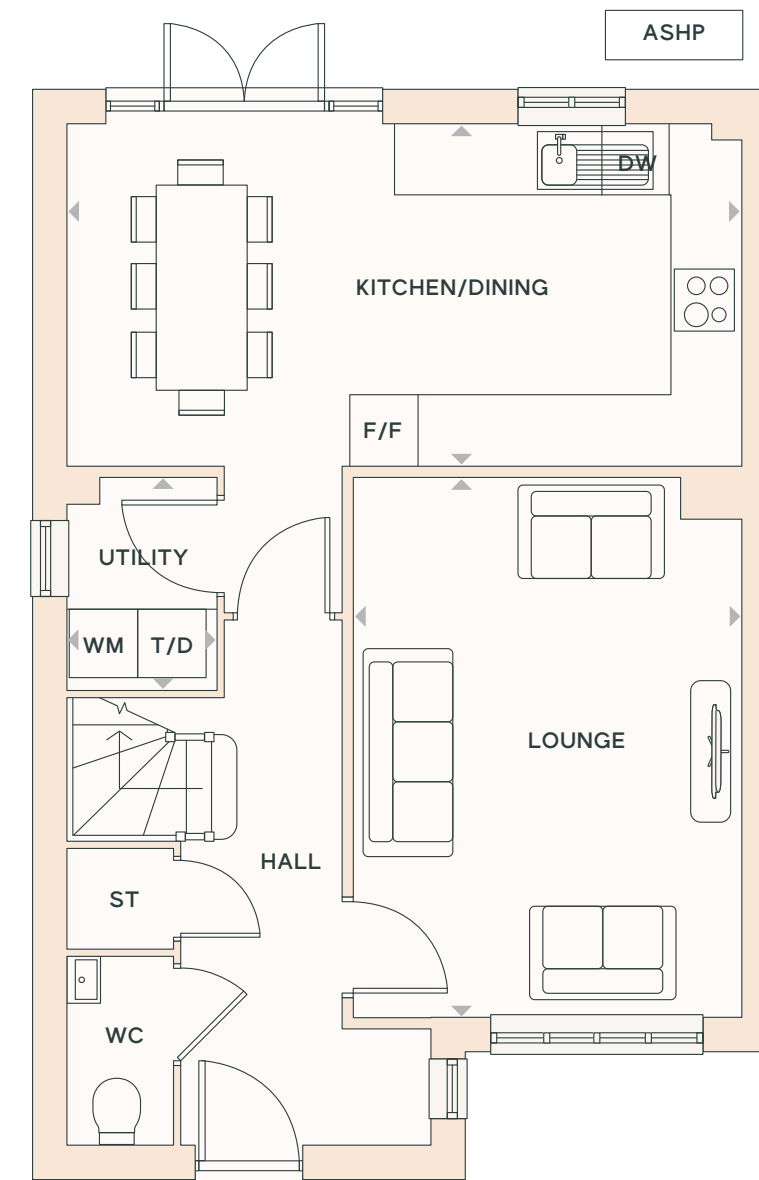
SECOND FLOOR

- BEDROOM 2**
3.98m x 3.53m | 13'0" x 11'6"
- BEDROOM 3**
3.98m x 3.39m | 13'0" x 11'1"
- BATHROOM**
1.98m x 1.73m | 6'5" x 5'8"

Image is indicative only. Floorplans shown are indicative only. The kitchen layout and furniture positions are for indicative purposes only. All dimensions indicated are approximate and should not be relied upon for carpet sizes or items of furniture. The developer reserves the right to make changes to these plans prior to exchange of contracts. For exact plot specification, details of external and internal finishes, dimensions and floorplan differences, please speak to a member of our Lettings Team for more details.

HARLESTONE GRANGE

MENU



GROUND FLOOR

KITCHEN/DINING

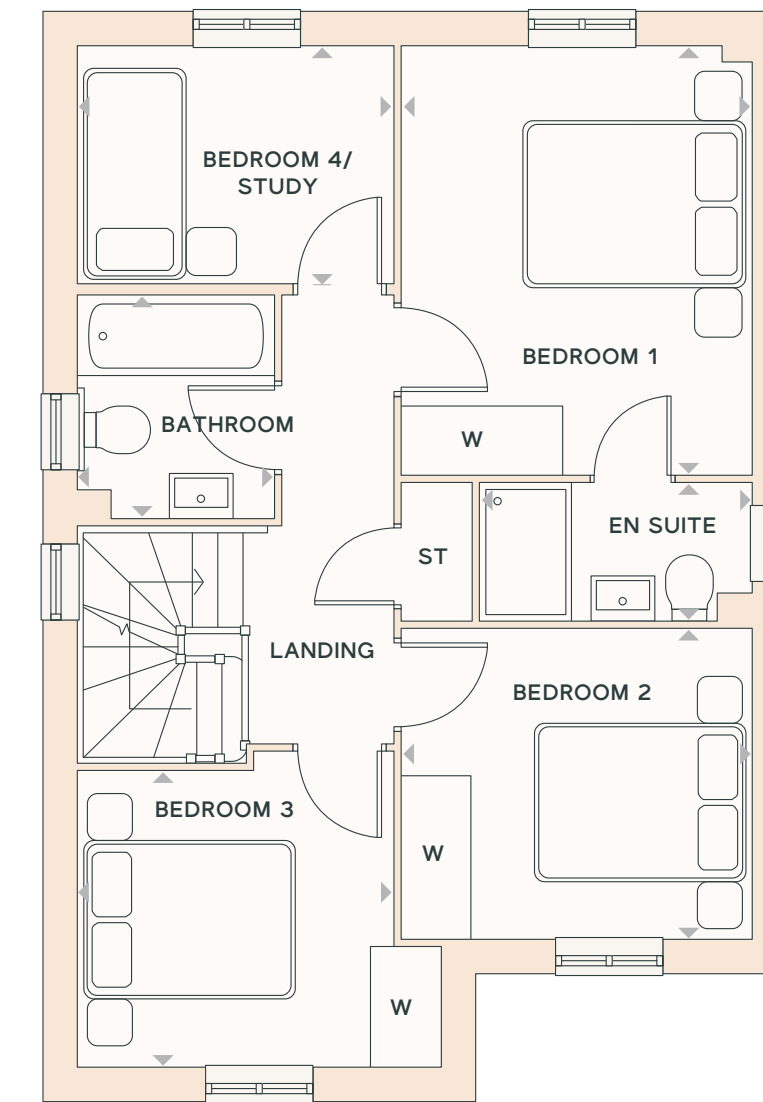
5.94m x 3.01m | 19'5" x 9'10"

LOUNGE

4.76m x 3.42m | 15'7" x 11'2"

UTILITY

1.87m x 1.32m | 6'1" x 4'3"



FIRST FLOOR

BEDROOM 1

3.78m x 3.09m | 12'4" x 10'1"

BEDROOM 2

3.09m x 2.74m | 10'1" x 8'11"

BEDROOM 3

3.21m x 2.61m | 10'6" x 8'6"

BEDROOM 4/STUDY

2.79m x 2.10m | 9'1" x 6'10"

BATHROOM

1.96m x 1.89m | 6'5" x 6'2"

EN SUITE

2.40m x 1.21m | 7'10" x 4'0"

Kingswood

4 bedroom home

Plot 78, 79 & 99

KEY

- ASHP Air Source Heat Pump
- ◄► Dimension location
- DW Dishwasher
- F/F Fridge/Freezer
- ST Store
- TD Tumble Dryer
- W Wardrobe space
- WC Cloakroom
- WM Washing Machine

Image is indicative only. Floorplans shown are indicative only. The kitchen layout and furniture positions are for indicative purposes only. All dimensions indicated are approximate and should not be relied upon for carpet sizes or items of furniture. The developer reserves the right to make changes to these plans prior to exchange of contracts. For exact plot specification, details of external and internal finishes, dimensions and floorplan differences, please speak to a member of our Lettings Team for more details.

HARLESTONE GRANGE



Nunwick

4 bedroom home

Plots 86 & 87

KEY

- ASHP Air Source Heat Pump
- ◄► Dimension location
- DW Dishwasher
- F/F Fridge/Freezer
- ST Store
- TD Tumble Dryer
- W Wardrobe space
- WC Cloakroom
- WM Washing Machine
- OV Oven



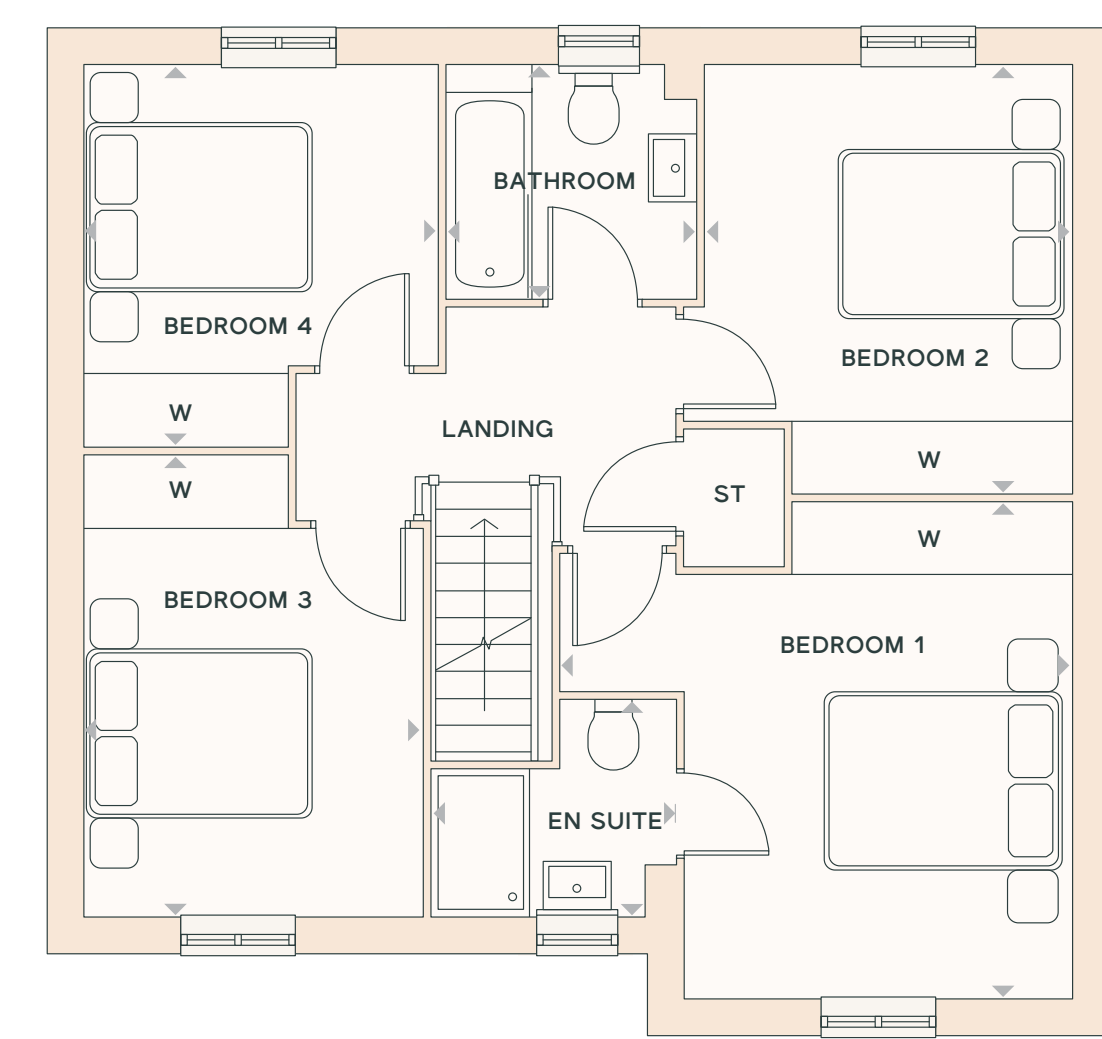
GROUND FLOOR

KITCHEN/DINING
5.29m x 2.71m | 17'4" x 8'10"

LOUNGE
4.93m x 3.32m | 16'2" x 10'10"

UTILITY
1.72m x 1.69m | 5'7" x 5'6"

GARAGE
5.18m x 2.63m | 16'11" x 8'7"



FIRST FLOOR

BEDROOM 1
4.10m x 3.19m | 13'5" x 10'5"

EN SUITE
2.03m x 1.79m | 6'7" x 5'10"

BEDROOM 2
3.54m x 3.01m | 11'7" x 9'10"

BEDROOM 3
3.81m x 2.80m | 12'6" x 9'2"

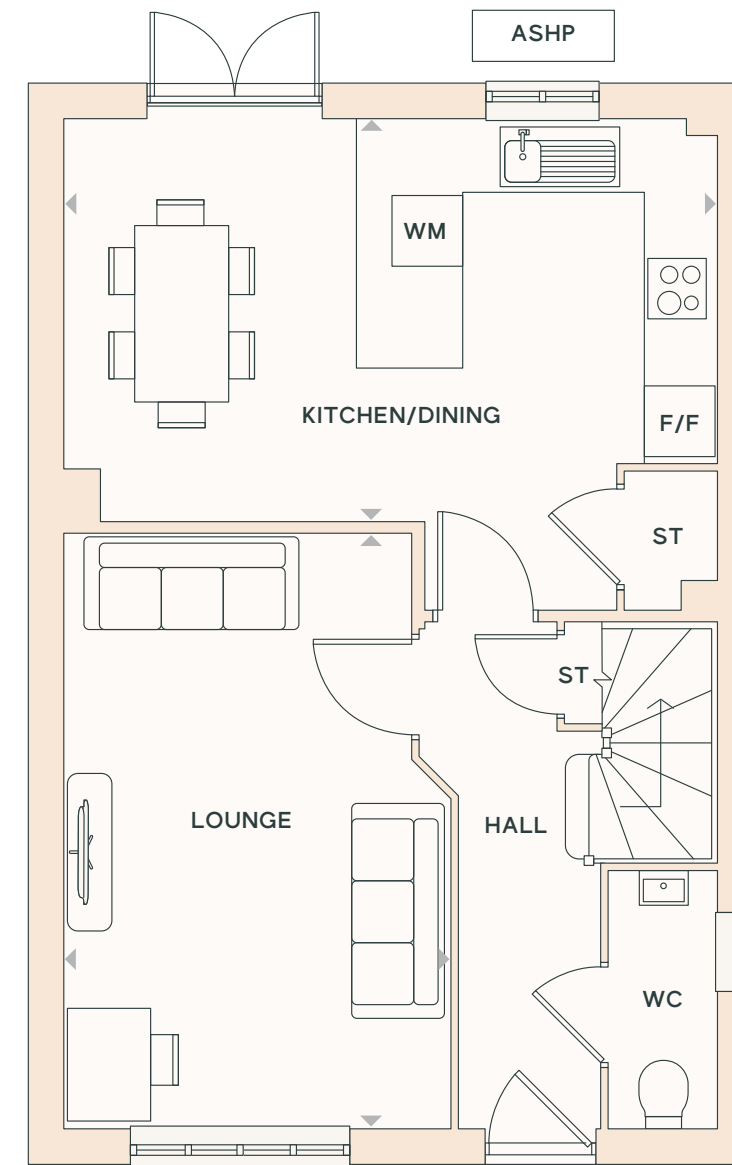
BEDROOM 4
3.16m x 2.92m | 10'4" x 9'6"

BATHROOM
2.07m x 1.93m | 6'9" x 6'3"

Image is indicative only. Floorplans shown are indicative only. The kitchen layout and furniture positions are for indicative purposes only. All dimensions indicated are approximate and should not be relied upon for carpet sizes or items of furniture. The developer reserves the right to make changes to these plans prior to exchange of contracts. For exact plot specification, details of external and internal finishes, dimensions and floorplan differences, please speak to a member of our Lettings Team for more details.

HARLESTONE GRANGE

MENU



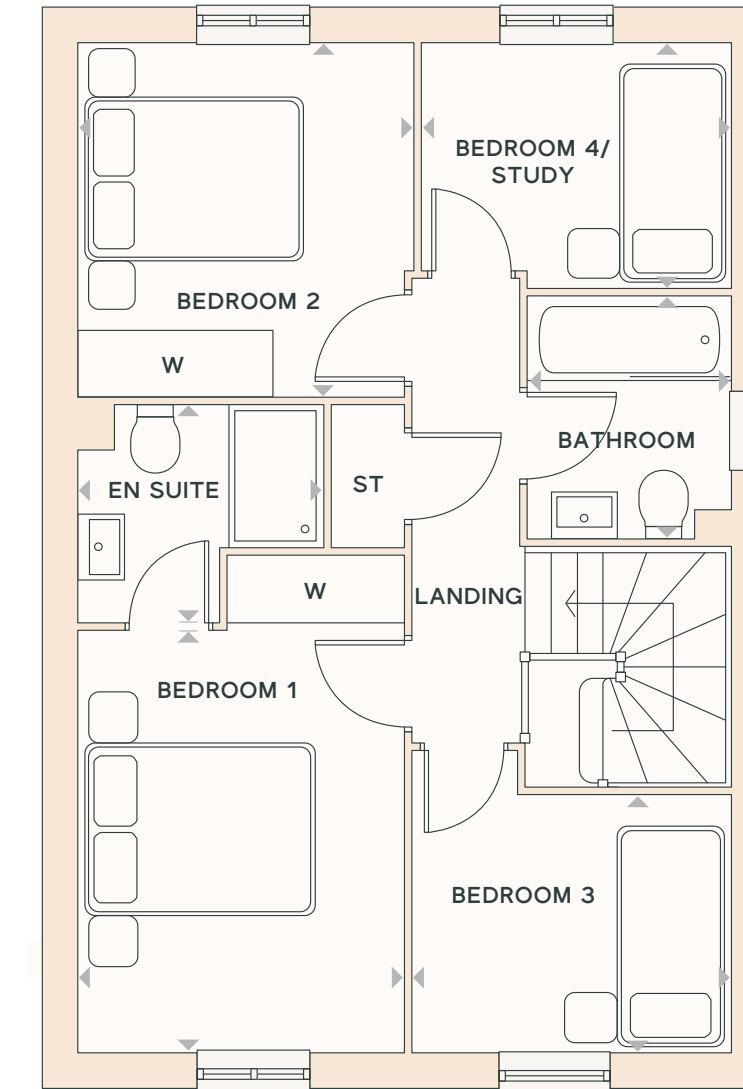
GROUND FLOOR

KITCHEN/DINING/FAMILY

5.57m x 3.43m | 18'3" x 11'3"

LOUNGE

5.07m x 3.29m | 16'8" x 10'9"



FIRST FLOOR

BEDROOM 1

3.60m x 2.78m | 11'9" x 9'1"

EN SUITE

1.97m x 1.86m | 6'5" x 6'1"

BEDROOM 2

3.02m x 2.86m | 9'10" x 9'4"

BEDROOM 3

2.72m x 2.18m | 8'11" x 7'1"

BEDROOM 4/STUDY

2.64m x 2.09m | 8'7" x 6'10"

BATHROOM

2.07m x 1.74m | 6'9" x 5'8"

Waverton

4 bedroom home

Plots 96 & 100

KEY

- ASHP Air Source Heat Pump
- ◄► Dimension location
- F/F Fridge/Freezer
- ST Store
- W Wardrobe space
- WC Cloakroom
- WM Washing Machine

Image is indicative only. Floorplans shown are indicative only. The kitchen layout and furniture positions are for indicative purposes only. All dimensions indicated are approximate and should not be relied upon for carpet sizes or items of furniture. The developer reserves the right to make changes to these plans prior to exchange of contracts. For exact plot specification, details of external and internal finishes, dimensions and floorplan differences, please speak to a member of our Lettings Team for more details.

trust
choose
visit**us.**
meet
join

0300 1246767