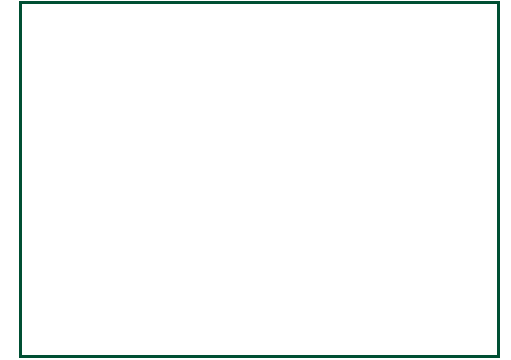
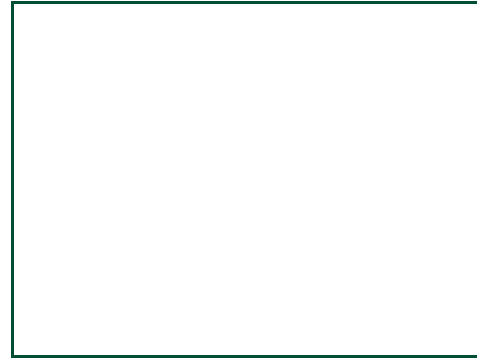




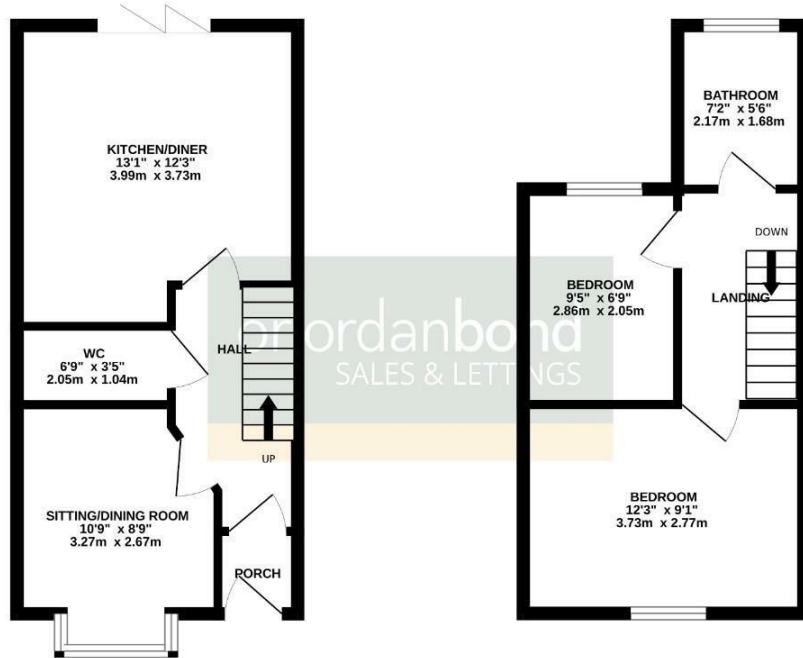
Loyd Road
Abington, Northampton

oriordanbond
SALES & LETTINGS



GROUND FLOOR

1ST FLOOR



TOTAL FLOOR AREA: 700sq ft. (65.0 sq m.) approx.
 Whilst every attempt has been made to ensure the accuracy of the floorplan contained herein, measurements of doors, windows, rooms and any other items are approximate and no responsibility is taken for any error, omission or mis-statement. This plan is for illustrative purposes only and should be used as such by any prospective purchaser. The services, systems and appliances shown have not been tested and no guarantee is given as to their operability or efficiency over the given.
 Made with Metacax 03208

Loyd Road

Abington
 NN1 5JA

PRICE £255,000

O'Riordan Bond is delighted to offer a rare opportunity to acquire this individual brand new build property, located in the heart of Abington, within just a short walk of the park.

The accommodation once complete will comprise entrance hall, study/snug, cloakroom/WC, large open plan kitchen/living space with double doors onto the garden, two first floor double bedrooms and a bathroom. This will be a stunning home with plenty of character with the modern benefits and technologies that come with a brand new home. The build completion is estimated to be July/August. (A/700/M)

Additional information

- Council Tax Band: New Build
- Energy Efficiency Rating: A

Viewing

Viewing strictly by appointment – details below

Disclaimer

O'Riordan Bond Estate Agents Limited has not tested apparatus, equipment, fittings or services and so cannot verify they are in working order. The buyer is advised to obtain verification from their solicitor or surveyor.

O'Riordan Bond Abington Sales
 01604 639007

abington@oriordanbond.co.uk

