



**Abberley Mews, SW4**

**£895,000**



## Abberley Mews, SW4

This rarely available home is located within a gated mews set just off Cedars Road. Accommodation includes a large open plan reception/kitchen/dining area, three bedrooms, two bathrooms and separate WC. The property further benefits from a private garden and off street parking.

Entering the property on the ground floor, you are welcomed into a spacious reception and dining room which forms the heart of the home. The kitchen sits just off this space and there are doors leading out to the garden, creating an easy flow for both everyday living and entertaining. The first floor comprises a generous double bedroom and a family bathroom. The second floor provides two further bedrooms along with an additional bathroom, completing the accommodation and offering flexible living space across three levels.

Abberley Mews is a short stroll away from Clapham Common with Lavender Hill & Clapham Old Town on your doorstep. Clapham Junction, Queenstown Road & Clapham Common Underground stations are within easy reach.

### Features

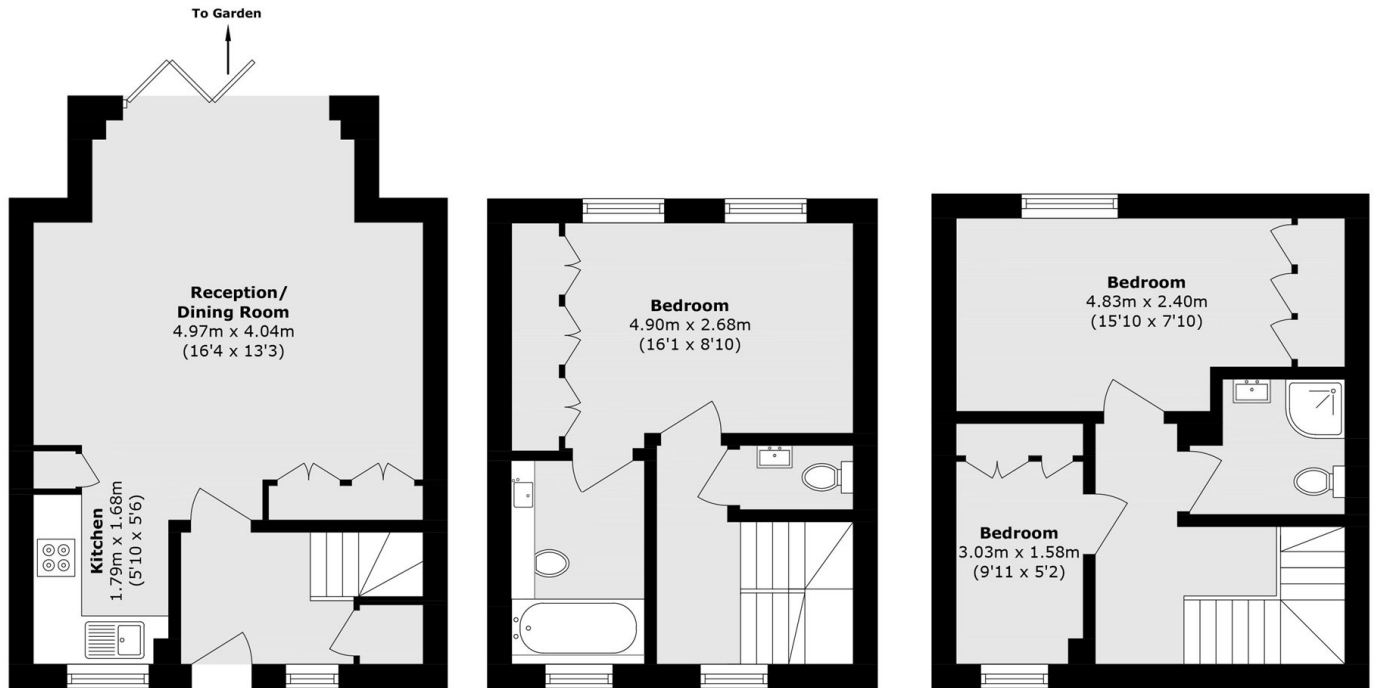
- Gated Mews House
- Open Plan Reception/Kitchen
- Three Bedrooms
- Two Bathrooms
- Private Garden
- Off Street Parking







# Abberley Mews, London, SW4



**Ground Floor**

**First Floor**

**Second Floor**

Total area (approx.): 80.7 sq. m (868.6 sq. ft)