



Bartholomew House, W10

£550,000



- Modern Development
- Newly Refurbished
- Excellent Storage
- Two Bathrooms
- Private Balcony
- Lift Access





ABOUT THE PROPERTY

A well-presented two bedroom, two bathroom apartment set within a modern development, offering balanced living space, a private balcony and lift access throughout the building.

The apartment centres on an open-plan reception room with separate living and dining areas, filled with natural light from large windows and opening onto a private balcony.

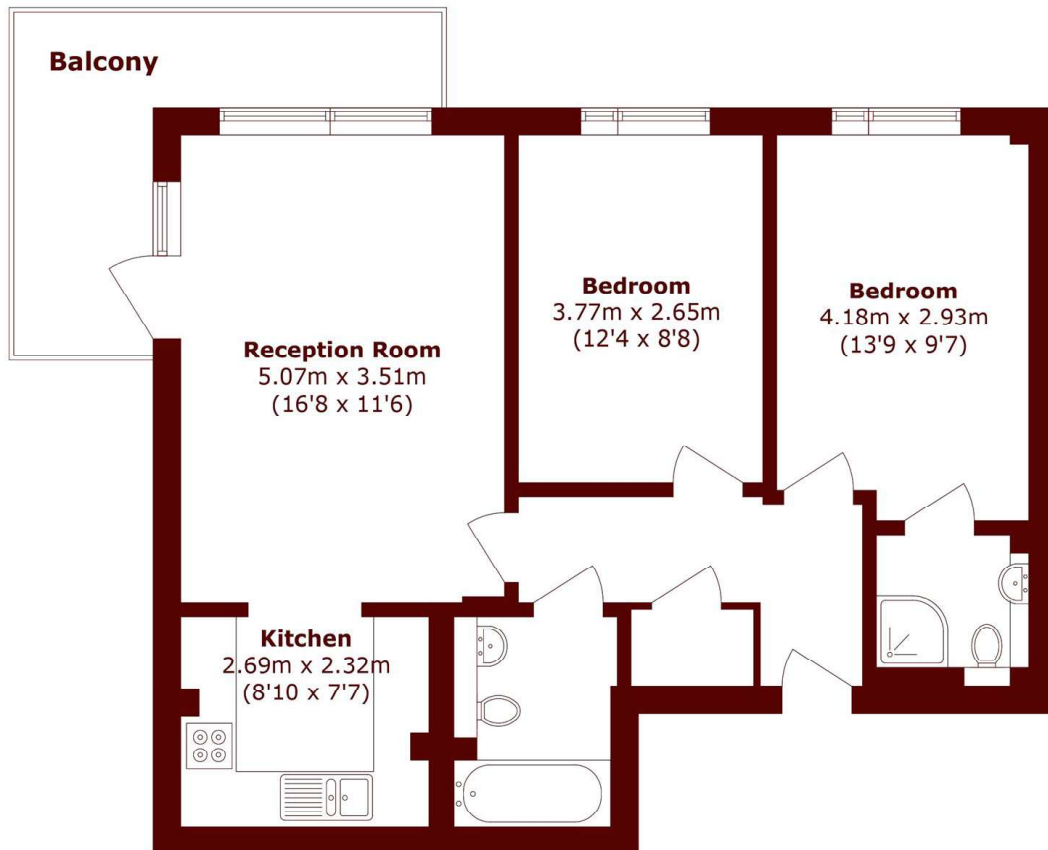
The modern kitchen features integrated appliances and ample worktop space. Both bedrooms are generous doubles with fitted storage, including a principal bedroom with en suite.

A separate contemporary bathroom serves the second bedroom and guests. Wood flooring in the main areas and tiled bathrooms complete this practical, comfortable home.

Situated in W10, the property is less than half a mile from Golborne Road, offering a vibrant mix of independent shops, cafés and restaurants.

Portobello Road and Notting Hill are also close by, alongside strong transport links into central London.





Total area (approx.): 62.8 sq. m (675.9 sq. ft)
Balcony area (approx.): 8.8 sq. m (94.7 sq. ft)

Marsh & Parsons North Kensington

136 Lancaster Road, London,
W11 1QU
020 7313 8350