



## SEVEN SISTERS ROAD, LONDON, N14

4 BED HOUSE - TERRACED

£3,400 PER MONTH

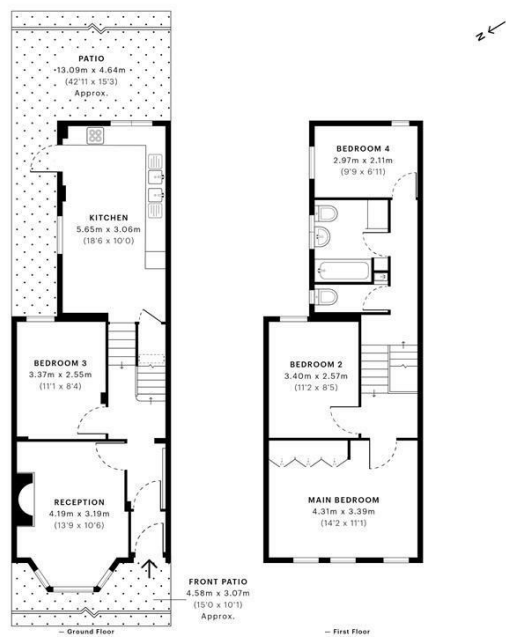
A Hemmingfords Collection: Four bedroom mid-terraced 1930s house. Living space offers large reception room, separate kitchen, four bedrooms and family bathroom. Sole use of private back garden.

Conveniently located for an array of local shops and restaurants and Stations at either Manor House (Piccadilly Line Zone 2) Harringay Green Lanes BR (Overground).

**Hemmingfords**

Seven Sisters Road, N15  
CAPTURE DATE: 10/01/2023 LASERSCAN POINTS: 58,016,710

GROSS INTERNAL AREA  
92.89 sqm / 999.86 sqft



Agents and their clients are encouraged to use the RICS Property Measurement Standard (PMS) for all commercial and residential property measurements. Please do not publish any information only and/or exclude items, or areas not included. Due to rounding, numbers may not add up precisely. All measurements shown are for the finished area, including all fixtures. See the measurement protocol for more information on the standard.



Energy Efficiency Rating		Current	Potential
Very energy efficient - lower running costs			
(92 plus) A			
(81-91) B			87
(69-80) C			
(55-68) D		61	
(39-54) E			
(21-38) F			
(1-20) G			
Not energy efficient - higher running costs			
<b>England &amp; Wales</b>		EU Directive 2002/91/EC	

Agents Note: Whilst every care has been taken to prepare these particulars, they are for guidance purposes only. All measurements are approximate and are for general guidance purposes only and whilst every care has been taken to ensure their accuracy, they should not be relied upon and potential buyers/tenants are advised to recheck the measurements

Hemmingfords Lettings  
34 Upper Street  
London  
N1 0PN

020 3890 7470  
info@hemmingfords.co.uk  
www.hemmingfords.co.uk

**Hemmingfords**