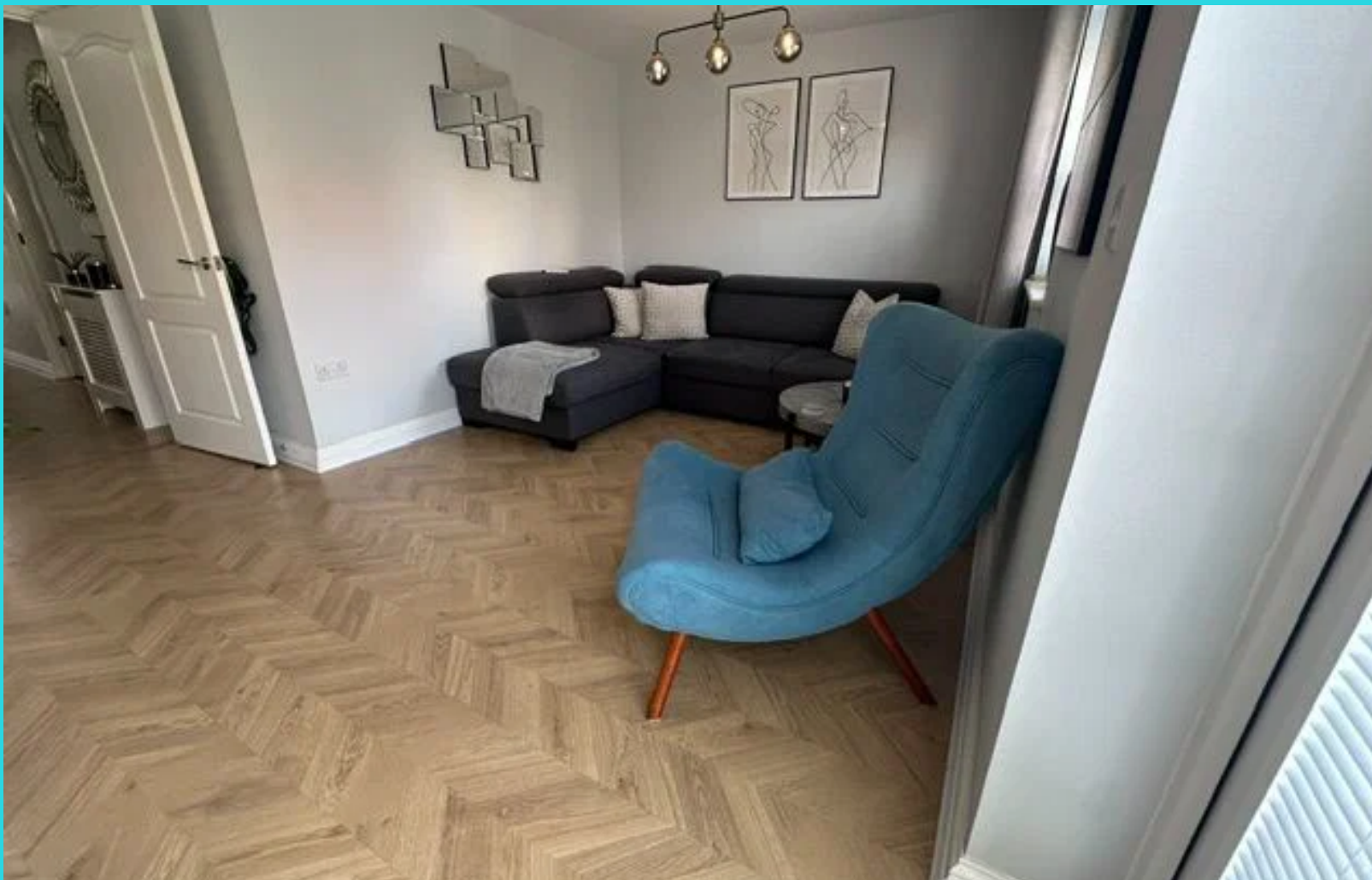




No Display Address Found

Whitfield - Offers in the Region of £345,000



**Bedrooms:** 3

**Bathrooms:** 2

**Receptions:** 1

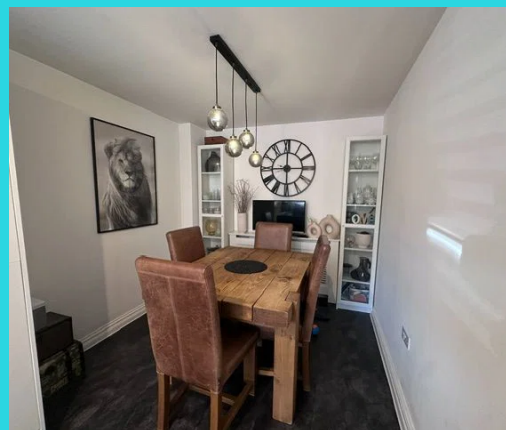
Embark on your homeownership journey with this delightful three-bedroom semi-detached house, an ideal entry point onto the property ladder.

This well-presented home offers an excellent balance of comfort and practicality, perfect for those stepping into their first property. The welcoming reception room provides a comfortable space to relax and entertain, ready for you to make your own.

The functional kitchen is perfect for preparing meals, and with two bathrooms, mornings will be a breeze, offering convenience for busy households.

Upstairs, three comfortable bedrooms provide ample personal space, whether for a growing family, a home office, or a guest room.

Outside, the added benefit of a covered carport and tandem parking ensures you'll always have a place for your vehicles, a significant advantage for any new homeowner.



Located in a convenient area, this home provides easy access to essential amenities and transport links, simplifying your daily commute and errands. It's perfectly positioned to enjoy local life without a hefty price tag.

This is a fantastic opportunity to secure an affordable and well-maintained property, offering a solid foundation for your future. Don't miss out on making this house your first home!