



Seren Park Gardens, Blackheath, SE3 7RS



Seren Park Gardens, SE3

Leasehold (107 years remaining)

A bright apartment in Blackheath featuring a large covered balcony overlooking peaceful grounds. This contemporary home offers modern living with allocated parking in a secure development.

Key Features

- 2 Bedrooms, 2 Bathrooms
- Large covered private balcony
- Elevated views over grounds
- Council Tax: **C**
- Service Charge: **TBC**
- Ground Rent: **£250 P/A**
- Excellent transport links
- EPC: **B**

This well-proportioned two-bedroom apartment showcases thoughtful design and quality finishes throughout. The open-plan living space creates an inviting atmosphere, while the contemporary kitchen provides functionality for everyday living and entertaining. A particular highlight is the generous covered balcony, offering a private outdoor retreat with pleasant views over the development's landscaped grounds. Two well-appointed bathrooms, including an ensuite, add convenience to the modern layout. With an EPC rating of B, the property benefits from energy efficiency and lower running costs.

Blackheath perfectly balances village charm with metropolitan convenience. The historic heath itself provides 211 acres of open space for recreation and relaxation, while Blackheath Village offers an eclectic mix of independent boutiques, gastropubs, and cafes. The area's strong sense of community and excellent schools make it particularly popular with families and professionals alike. Transport connections are exceptional, with Blackheath Station providing Southeastern services into London Bridge, Cannon Street, and Charing Cross. Westcombe Park and Greenwich stations offer additional routes.









Seren Park Gardens

Approximate Gross Internal Area = 61.1 sq m / 657 sq ft

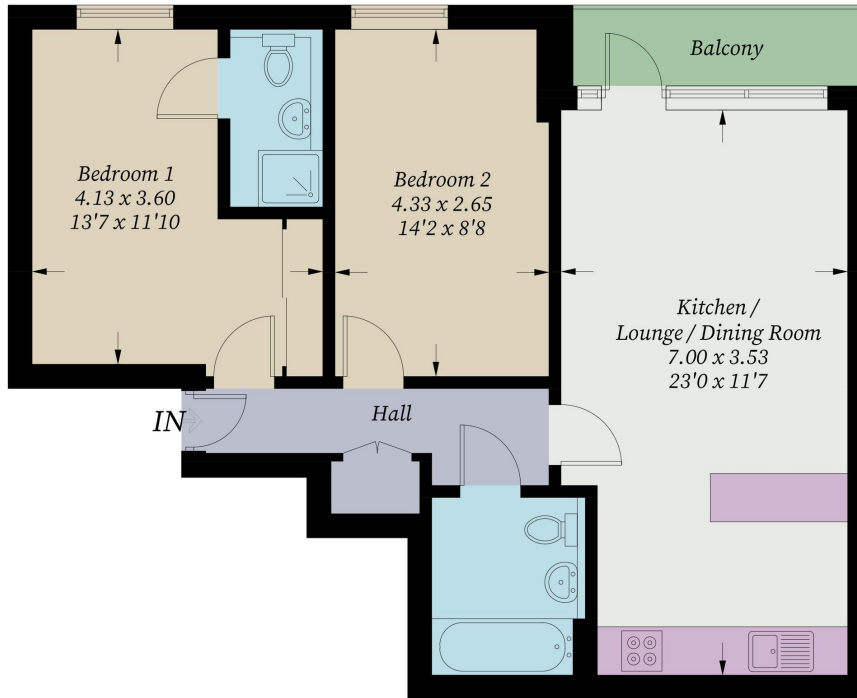


Illustration for identification purposes only, measurements are approximate, not to scale. Fourlabs.co © (ID1298391)