



Sutton View, Moon Street, Plymouth
£90,000 Leasehold



Moon Street, Plymouth

Fourth floor one bed flat in Sutton View, Plymouth. Open plan living, lift access, needs modernisation. Close to city centre and harbour. Remediation works planned. Great renovation potential.

Council Tax band: B

Tenure: Leasehold

Service Charge: £1981.69 per annum

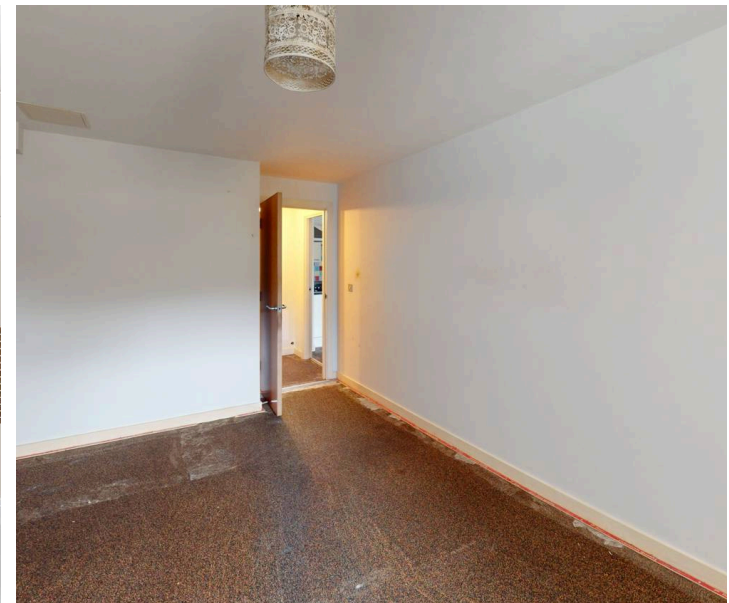
Ground Rent: £150.00 per annum

- One Bedroom Purpose Built Apartment situated on the Fourth Floor with Lift Access
- Accommodation includes a large Open Plan Living Room and Kitchen, Large Bedroom, Bathroom and Storage Cupboard
- The property does require modernisation and is priced accordingly.
- Sutton View is located on Moon Street in Plymouth and is conveniently located for ease of access to the City Centre, Sutton Harbour and The Barbican
- The property is being remediated by the Freeholder and works in accordance with the Building Safety Act 2022 are due to commence this year.

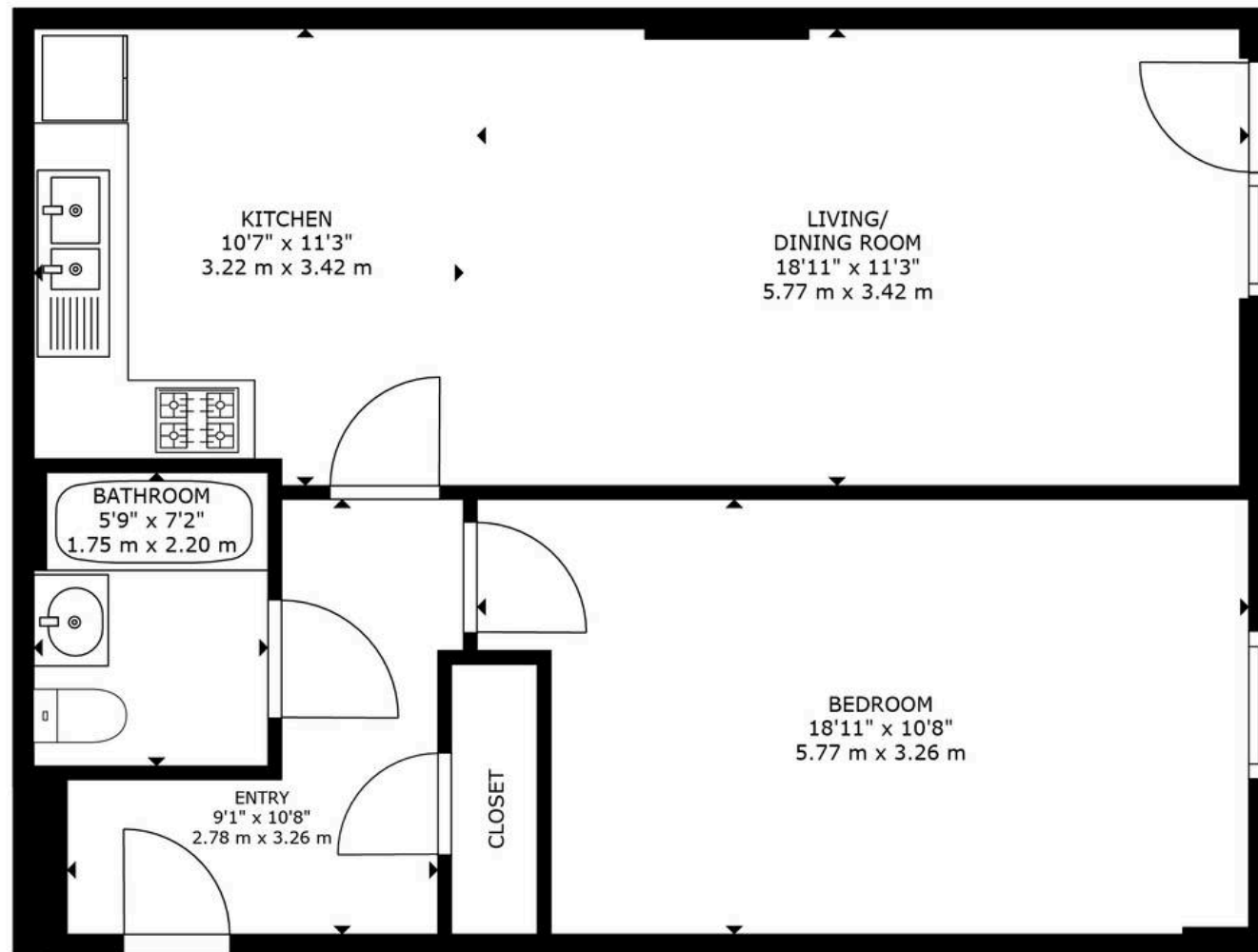


Moon Street, Plymouth

Situated on the fourth floor of Sutton View, this one bedroom purpose-built apartment offers a fantastic opportunity for buyers looking to put their own stamp on a property in a prime Plymouth location. With lift access, the flat opens into a large open plan living room and kitchen, providing a flexible space for relaxing or entertaining. The generously sized bedroom offers plenty of room for a double bed and additional furniture, while a separate bathroom and a handy storage cupboard add to the practical layout. The property does require modernisation, making it ideal for those keen to renovate to their own taste, and is attractively priced to reflect this. Sutton View is conveniently located on Moon Street, just a short distance from the city centre, Sutton Harbour and The Barbican, so you'll have an array of shops, restaurants and waterfront attractions within easy reach. The building is currently being remediated by the freeholder, with works set to begin this year in line with the Building Safety Act 2022, offering peace of mind for future residents. This is a great chance to secure a well-located flat with plenty of potential in one of Plymouth's most sought-after areas.







FLOOR PLAN



Atwell Martin

Atwell Martin, 65 Southside Street – PL1 2LA

01752 202121

plymouthsales@atwell-martin.co.uk

plymouth.atwellmartin.co.uk/

Atwell Martin Plymouth endeavour to ensure the accuracy of property details produced and displayed. Please note that we have not tested any apparatus, equipment, fixtures, fittings or services and so cannot verify that they are connected, in working order or fit for purpose. It is imperative that the buyer of any property makes such checks, prior to purchase so as to satisfy themselves of the properties suitability for their purchase. .

