



CHRIS MACSWEENEY POWERED BY exp TM UK

@ chris.macsweeney@exp.uk.com

chrismacsweeney.exp.uk.com

☎ 07468 48 88 18

St Johns Road, Arlesey, Bedfordshire

Offers Over £350,000

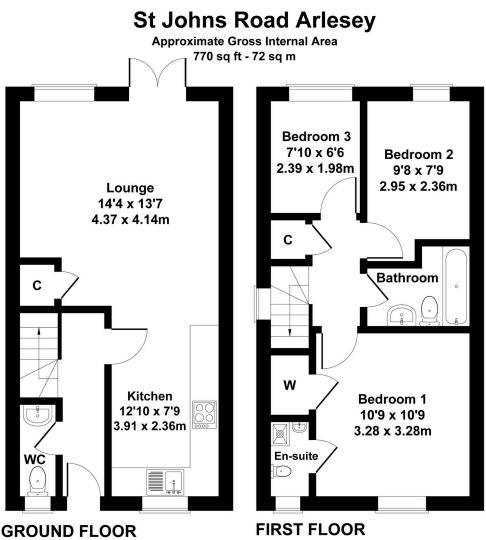
3 2 1

- Stunning End of Terrace Home
- Replacement Bathroom and Ensuite
- Open Plan Lounge and Dining Area
- Garden with Office/Studio (optional)
- PARKING FOR THREE VEHICLES
- Three Bedrooms with Ensuite to Master
- Replacement Kitchen with Fitted Appliances
- Downstairs WC
- Single Garage with Roof Storage
- Quote CM0245



A beautifully presented end of terrace home on a popular development in the village Arlesey, within walking distance of the local shops and school in addition to Arlesey mainline station (to Kings Cross) The accommodation has been maintained to a very high standard throughout and comprises of an entrance hall, a downstairs WC, a replacement kitchen with appliances, opening to a fabulous lounge and dining area with doors to the garden. Upstairs offers three bedrooms with a replacement ensuite shower and family bathroom. Outside there is an enclosed, low maintenance rear garden, incorporating a large office/studio (optional) and gated access to the side, leading to a single garage and PARKING FOR THREE CARS. MUST BE VIEWED - Quote CM0245.





Not to Scale. Produced by The Plan Portal 2025
For Illustrative Purposes Only.



Score	Energy rating	Current	Potential
92+	A		
81-91	B		89 B
69-80	C	75 C	
55-68	D		
39-54	E		
21-38	F		
1-20	G		